



## Principal Place, London EC2A

Price £1,075 per week - Furnished







## Description

A brand new 2 bedroom in the iconic Principal Tower, EC2.

Offered fully furnished, this stunning 2 bedroom apartment is situated on the 12th floor and has South Western views towards the City skyline. The property comprises a spacious open plan reception with fully fitted kitchen, two double bedrooms with fitted wardrobes, two luxury Porcelain bathrooms with under floor heating, large balcony, comfort cooling and heating and oak herringbone flooring.

Principal Tower is in an idyllic location, a short walk to Liverpool Street Station (0.3 miles) as well as Shoreditch High Street Station (0.3 miles). The development boasts excellent amenities including a pool with Jacuzzi, spa, gymnasium, residents' lounge/bar, private cinema room and 24 hour concierge.

We understand that cooling / heating is delivered via a communal system for which separate charges apply.

Rent is payable on a monthly basis and you may be required to pay more than a month's rent in advance, depending on your circumstances. You will be required to pay a 1 week holding deposit following a successful offer. Utility bills, council tax, tele

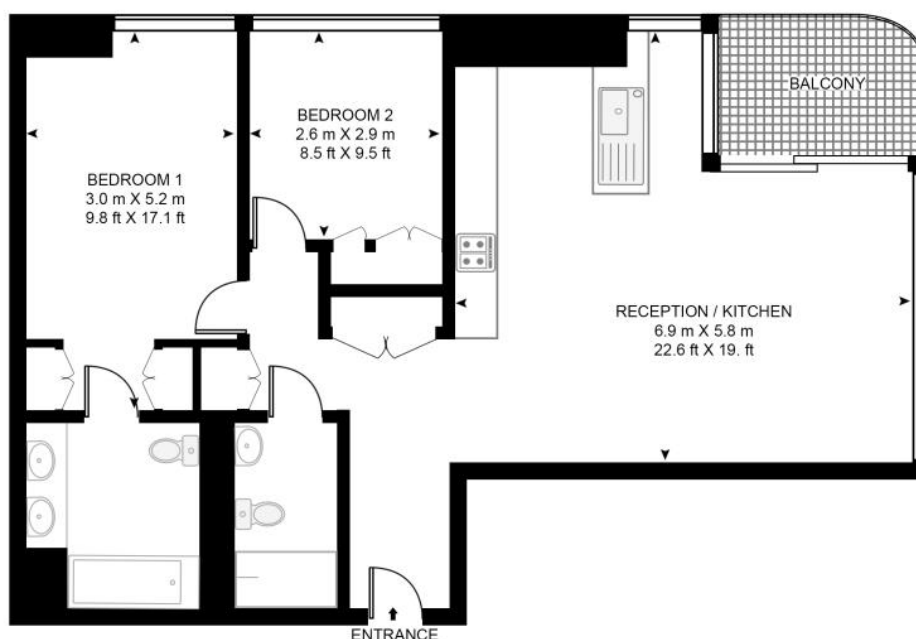
- 2 Bedrooms
- 2 Bathrooms
- Large balcony
- Open-plan reception
- 24 hour concierge
- 0.3 miles from Liverpool Station
- Approx. 876 sq ft (81.4 sq m)
- Furnished
- EPC: B
- Council tax: Band F

# Floorplan

876 sq ft | 81 sq m

## PRINCIPAL TOWER

APPROXIMATE GROSS INTERNAL FLOOR AREA 876 SQ.FT (81.4 SQ.M)



Whilst every attempt has been made to ensure the accuracy of the floor plan contained here, measurements of door, windows, rooms and any other items are approximate and no responsibility is taken for any error, omission, or mis-statement. The plan for illustrative purposes only and should be used as such by any prospective purchaser. The services, system and appliances shown have not been tested and no guarantee as to their operability or efficiency can be given.

City  
25 Walbrook The Walbrook  
Building,  
London EC4N 8AF  
+4420 7337 4000

*Urban living, your way.*

[jll.co.uk/residential](http://jll.co.uk/residential)

© 2019 Jones Lang LaSalle IP, Inc. All rights reserved. All information contained herein is from sources deemed reliable; however, no representation or warranty is made to the accuracy thereof.

