

High Street, London E15

Guide price £250,000 Leasehold







Description

We are pleased to present a recently refurbished one-bedroom apartment situated on the 8th floor of the sought-after Central House development.

This delightful property boasts a light and airy lounge that provides access to a generously sized balcony, offering urban views. Additionally, it features a separate newly fitted kitchen, a well-appointed double bedroom and a stylish modern bathroom.

This property presents an excellent opportunity for both first-time buyers and investors alike. It comes with the added benefit of a 975-year lease, offering peace of mind, and is being offered to the market without any onward chain.

The Central House development is a gated community offering residents several amenities, including a dedicated concierge service, a residents-only gym, a postal room, and convenient lift access. Its prime location, just moments away from Pudding Mill DLR Station and Stratford Station, provides easy commuting access to Canary Wharf and the City. Moreover, Westfield Shopping Centre and the Queen Elizabeth Park are within a short walking distance.

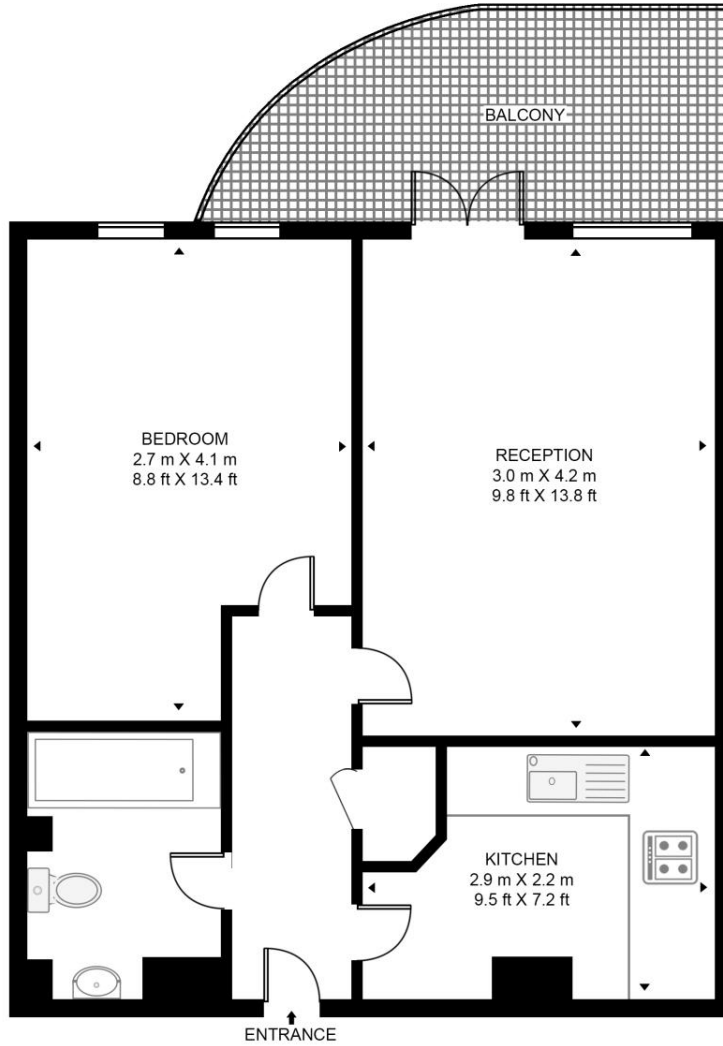
- One bedroom apartment
- 8th Floor with lift access
- Balcony
- Concierge
- Residents' gym/sauna
- Over 900 year lease
- Approx. 404 sq. ft (37.5 sq.m)
- EPC Rating C

Floorplan

404 sq ft | 38 sq m

CENTRAL HOUSE

APPROXIMATE GROSS INTERNAL FLOOR AREA 404 SQ.FT (37.5 SQ.M)



EIGHTH FLOOR



This floor plan has been defined by the RICS Code of Measurement. This floor plan and all others are for approximate representative purposes only and upon usage is agreed to as such by the client.
WWW: hdvirtualart.com | TEL: 0203.974.1567 | EMAIL: info@hdvirtualart.com

Stratford
5 Station Street,
London E15 1DA
+4420 3147 1500
Lettingsstratford@eu.jll.com

Urban living, your way.

jll.co.uk/residential

© 2019 Jones Lang LaSalle IP, Inc. All rights reserved. All information contained herein is from sources deemed reliable; however, no representation or warranty is made to the accuracy thereof.

