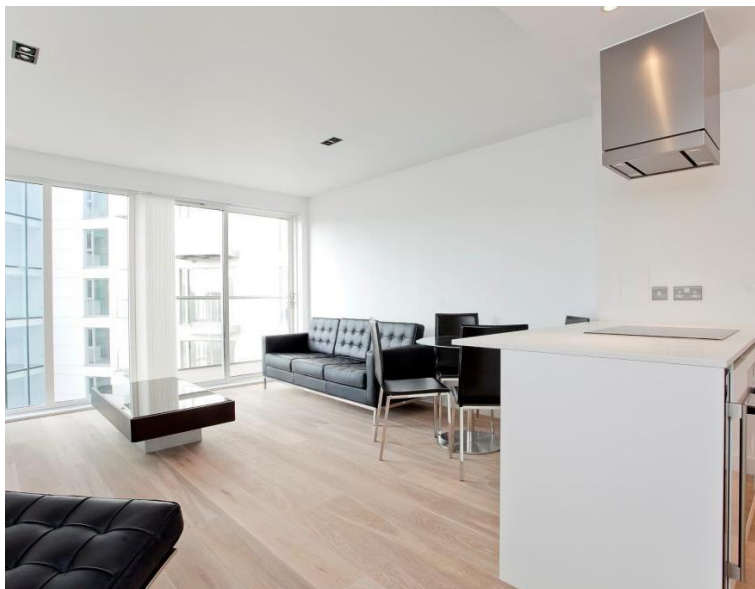


## Avantgarde Place, London E1

Price £625 per week - Furnished









## Description

A luxury 1 bedroom apartment in the stylish Avantgarde development

Offering approximately 535 sq. ft. of living space, this spacious apartment offers reception and dining area, balcony with views of the landscaped courtyard, large double bedroom with fitted wardrobes, open plan kitchen with Siemens appliances to include wine cooler, contemporary Roca bathroom, wood veneer flooring and excellent storage.

This luxury development has a high specification to include comfort cooling, resident's lounge, on site leisure facilities and 24 hour concierge. Based in the stylish hub of Shoreditch, Avantgarde is located in Zone 1, with local transport links such as Shoreditch High Street, Old Street, Hoxton and Aldgate.

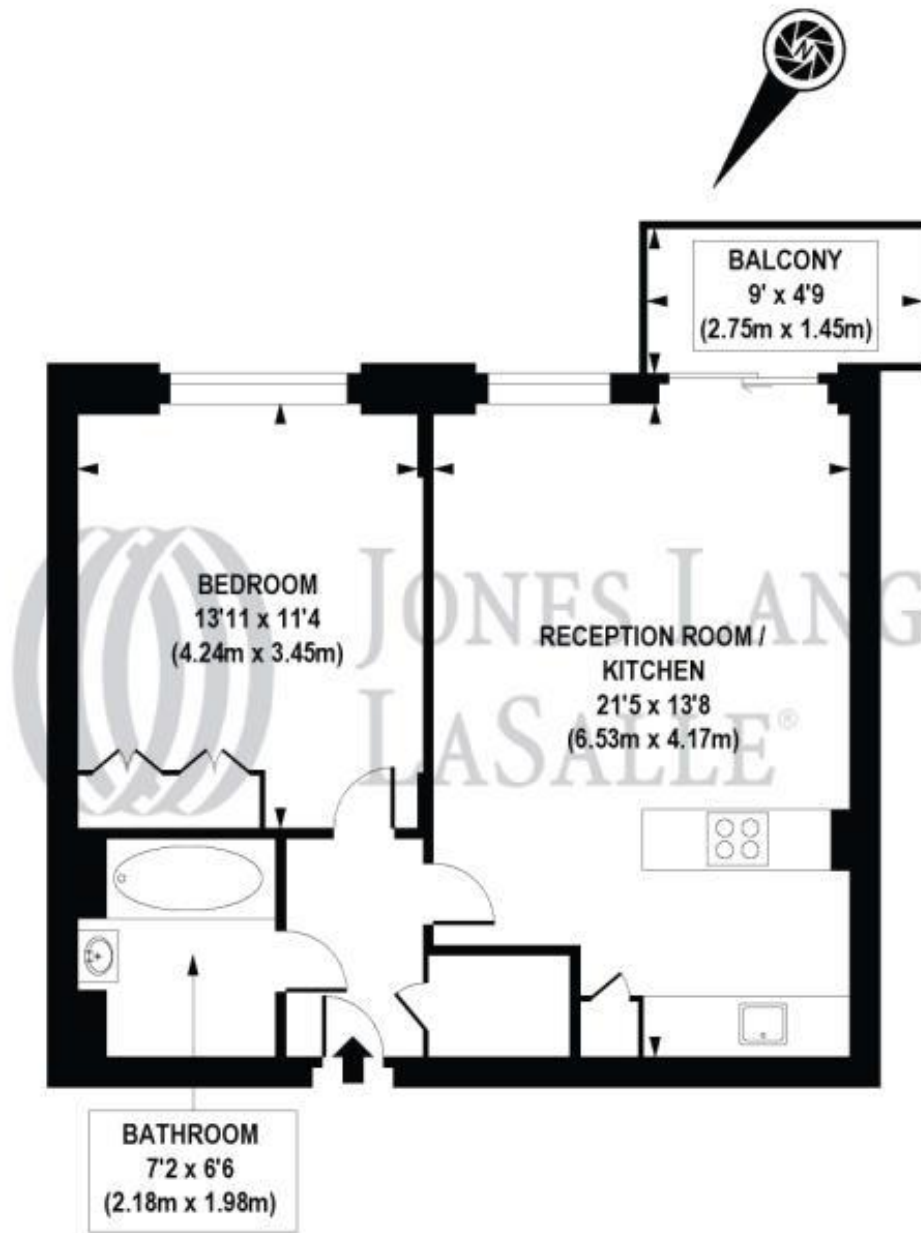
We understand that cooling / heating is delivered via a communal system for which separate charges apply.

Rent is payable on a monthly basis and you may be required to pay more than a month's rent in advance, depending on your circumstances. You will be required to pay a 1 week holding deposit following a successful offer. Utility bills, council tax, telephone line and broadband are not included in the rent. As w

- 1 Bedroom
- 1 Bathroom
- 6th floor
- Balcony with courtyard views
- On site leisure facilities
- 24 hour concierge
- 0.2 miles from Shoreditch High Street station
- Approx. 535 sq ft (49.7 sq m)
- Furnished
- EPC:B

# Floorplan

535 sq ft | 50 sq m



SIXTH FLOOR

APPROX. GROSS INTERNAL FLOOR AREA 541 sq. ft / 50.22 sq. m

Floorplan is for illustrative purposes only and is not to scale. Every attempt has been made to ensure the accuracy of the floorplan shown, however all measurements, fixtures, fittings and data shown are an approximate interpretation for illustrative purposes only. Liability for errors, omissions or mis-statement through negligence or otherwise is hereby excluded.



City  
25 Walbrook The Walbrook  
Building,  
London EC4N 8AF  
+4420 7337 4000

*Urban living, your way.*

[jll.co.uk/residential](http://jll.co.uk/residential)

© 2019 Jones Lang LaSalle IP, Inc. All rights reserved. All information contained herein is from sources deemed reliable; however, no representation or warranty is made to the accuracy thereof.

