



Nine Elms Lane, London SW8

Price £1,635 per week - Furnished





Description

River Park Tower is a spectacular residential building offering a new standard in luxury living. Tenants will have the use of exceptional amenities and services at their fingertips, in beautifully designed apartments.

This contemporary apartment has been thoughtfully designed to maximise the use of space. It is spacious and bright, with floor to ceiling windows flooded with light. The kitchen and bathrooms have been finished to the highest standards and the style is refined throughout making the apartment a welcome retreat at the end of the day.

Multiple amenity spaces have been designed to calm and inspire include a state of the art fully equipped gym and studio, a 24-hour concierge, a business lounge, multi media rooms with cinema, karaoke, games, meeting area, play area, sky lounge and roof terrace.

Residents can benefit from an exceptional experience including recommendations, booking assistance, event planning, ticketing, travel arrangements and shopping. Whilst the in house team will strive to meet all requests, certain services may be subject to availability and additional charges.

Located close to the River Thames and a few minutes from Nine Elms Underground station and Vauxhall transport hub means getting around the city couldn't be simpler. The Thames Clipper service is also nearby.

We understand that cooling / heating is delivered via a communal system for which separate charges apply.

Rent is payable on a monthly basis and you may be required to pay more than a month's rent in advance, depending on your circumstances.

- 2 bedrooms, 2 bathrooms
- Exclusive Resident Services
- Gym and Studios
- Sky and Business Lounges
- Private cinema and games room
- 24-hour concierge
- Furnished
- 1021 sq ft (94.9 sq m)
- EPC: B
- Deposit amount: £9810

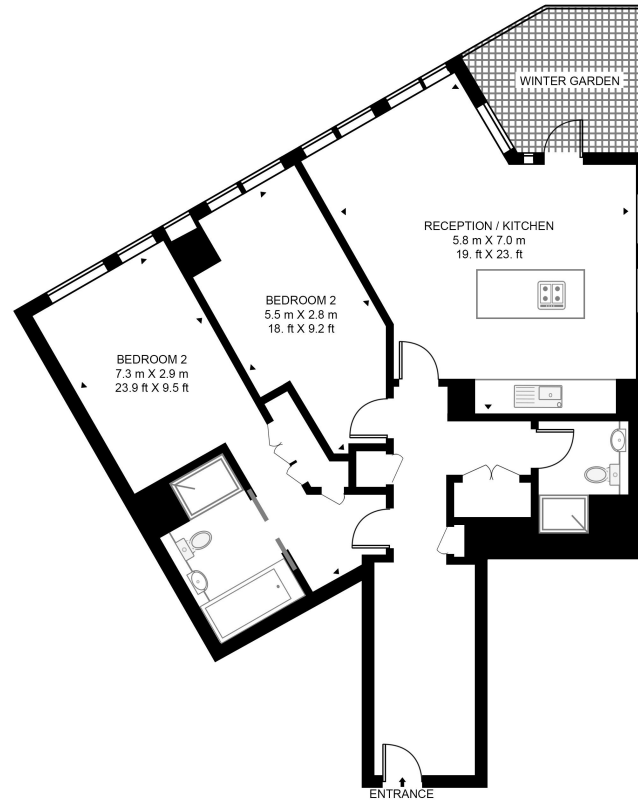


Floorplan

1,021 sq ft | 95 sq m

RIVER PARK TOWER, THAMES CITY

APPROXIMATE GROSS INTERNAL FLOOR AREA 1021 SQ.FT (94.9 SQ.M)



HDVA

This floor plan has been defined by the RICS Code of Measurement. This floor plan and all others are for approximate representative purposes only and upon usage is agreed to as such by the client.
WWW: hdvirtualart.com | TEL: 0203.974.1567 | EMAIL: info@hdvirtualart.com

Nine Elms
4 Riverlight Quay,
London SW11 8DG
+4420 3147 1333
lettingsnineelms@eu.jll.com

Urban living, your way.

jll.co.uk/residential

© 2019 Jones Lang LaSalle IP, Inc. All rights reserved. All information contained herein is from sources deemed reliable; however, no representation or warranty is made to the accuracy thereof.

