



# Hans Crescent, London SW1X

Asking price £1,950,000 Leasehold







## Description

A contemporary and light third floor flat (with lift) in this sought after building with a porter in the heart of Knightsbridge.

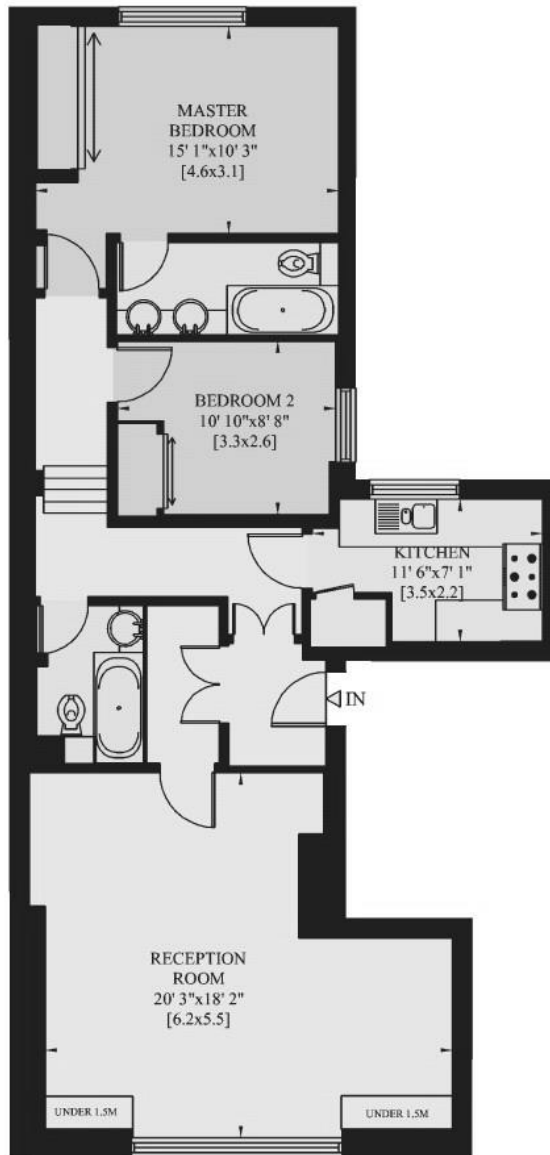
The flat has great entertaining space and benefits from the local amenities that Knightsbridge and Sloane Street have to offer.

- Leasehold; 977 years remaining (exp 29/09/3001)
- 2 bedrooms
- Bathroom (1 en suite)
- Reception room
- Kitchen
- Lift
- Porter
- Approx. 944 sq ft (88 sq m)
- EPC: C
- Council tax: Band G

# Floorplan

944 sq ft | 88 sq m

Gross Internal Area: 88 Sq. metres  
944 Sq. feet



THIRD FLOOR

Knightsbridge  
174 Brompton Road,  
London SW3 1HP  
+4420 7306 1600  
SalesKnightsbridge@jll.com

*Urban living, your way.*

[jll.co.uk/residential](http://jll.co.uk/residential)

© 2019 Jones Lang LaSalle IP, Inc. All rights reserved. All information contained herein is from sources deemed reliable; however, no representation or warranty is made to the accuracy thereof.

