



Wyndham Apartments, River Gardens Walk, Greenwich, SE10 0TY



Wyndham Apartments, River Gardens Walk

Leasehold

Located within the ever popular and prestigious River Gardens development comes this stunning 848 Sq Ft South Facing, River view apartment. Positioned on the 1st floor this property feels spacious and bright and has the added benefit of a lovely balcony.

Key Features

- Two Bedrooms & Two Bathrooms
- Large Private South Facing Balcony
- 24-Hour Concierge
- Offered to Market with No Chain
- Secure parking space with charging point
- Lease Remaining: **992 Years**
- Service Charge: **£4,832.24 P/A**
- Ground Rent: **£400 P/A**
- Council Tax Band: **E**
- EPC Rating: **B**

Principally this property offers two double bedrooms, the master with en suite. There is a further luxury bathroom. Then you have the living, dining and kitchen area which has a lovely feel to it being South Facing as the sun streams in. The River Gardens really is the jewel in SE10's River Side living and has a really exclusive and vibrant feel to it. There is a stunning gym with swimming pool along with 24hr concierge and secure underground parking as well as a handy storage cage for the apartment.

Presented in turn key condition which will prove popular with City professional and local downsizers alike.

An early viewing is a must on what were the most sought after apartments on the River and benefits from no onward chain.









Wyndham Apartments, SE10

Approximate Gross Internal Area = 81.3 sq m / 875 sq ft

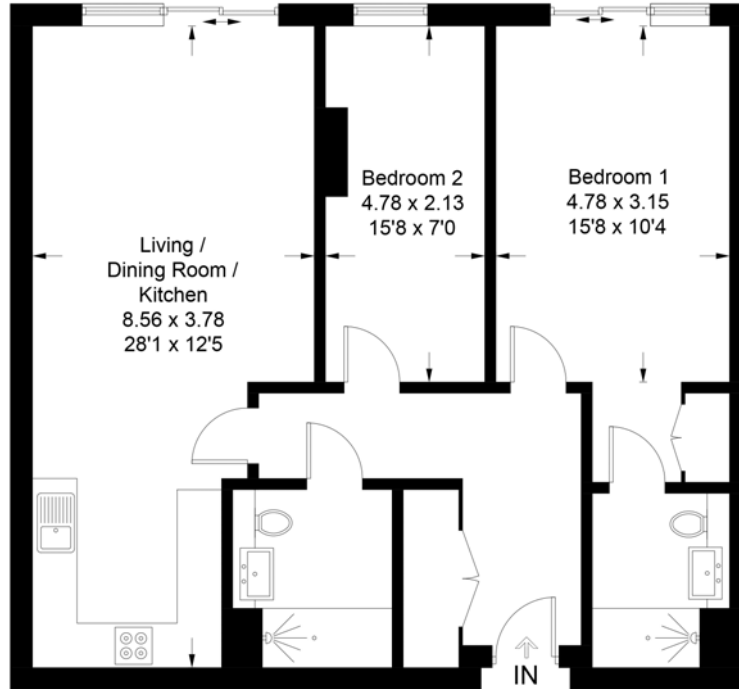


Illustration for identification purposes only, measurements are approximate, not to scale. floorplansUsketch.com © (ID1120416)