



## Lisson Grove, London NW1

Price £630 per week - Furnished







## Description

A modern, well presented first floor apartment in a popular development close to Marylebone and Baker Street stations. The apartment has a reception room with floor to ceiling windows with a Juliette balcony and a modern open-plan kitchen, a double bedroom with dressing area and an en-suite bathroom, a separate study/guest room and a guest cloakroom. Jerome House is located within walking distance of Marylebone and Baker Street stations, as well as wealth of amenities and transport links and The Regents Park.

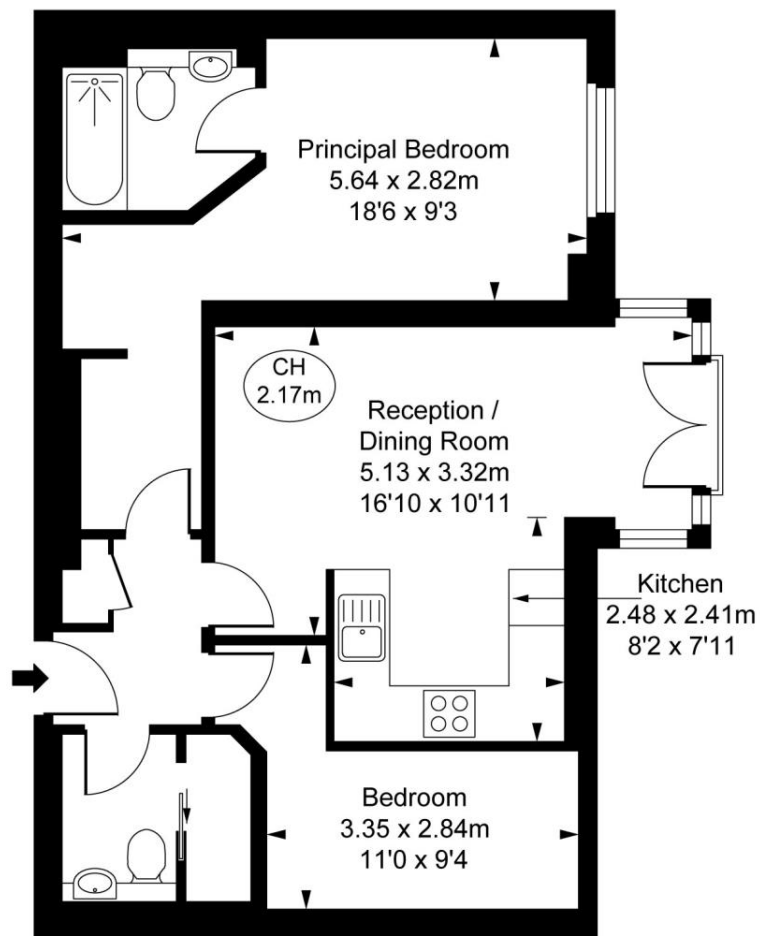
Rent is payable on a monthly basis and you may be required to pay more than a month's rent in advance, depending on your circumstances. You will be required to pay a 1 week holding deposit following a successful offer. Utility bills, council tax, telephone line and broadband are not included in the rent. As well as paying the rent, you may also be required to make some additional permitted payments. If your tenancy does not qualify as an AST, additional fees may apply. Please visit [jll.co.uk/fees](http://jll.co.uk/fees) for details of fees which may be payable when renting a property.

- Modern Apartment
- Secure Development
- 24hr Concierge
- Open-Plan Living
- Juliette Balcony
- Separate Study
- Furnished
- Wooden Flooring
- Council Tax: Band E
- Deposit amount: £3,150 (estimate) and an initial holding deposit of 1 week's rent is payable to res

# Floorplan

584 sq ft | 54 sq m

Jerome House,  
Lisson Grove, NW1  
Approximate Gross Internal Area  
54.22 sq m / 584 sq ft  
( CH = Ceiling Heights )



First Floor

This plan is not to scale. It is for guidance and not for valuation purposes.  
All measurements and areas are approximate only, and have been prepared in accordance with the current edition of the RICS Code of Measuring Practice.  
© Fulham Performance

Mayfair and Marylebone  
13a St George Street,  
London W1S 2FQ  
+44 207 399 5550  
mayfair@jll.com

*Urban living, your way.*

[jll.co.uk/residential](http://jll.co.uk/residential)

© 2019 Jones Lang LaSalle IP, Inc. All rights reserved. All information contained herein is from sources deemed reliable; however, no representation or warranty is made to the accuracy thereof.

