



## Scarlet Close, London E20

Asking price £590,000 Leasehold









## Description

Proudly presenting this exquisite two-bedroom apartment with balcony nestled in the heart of East Village, offering modern and contemporary living. This well-designed (724 sq. ft) apartment features two bedrooms and a modern three piece family bathroom suite.

As you enter the apartment, you are welcomed by an inviting entrance hall with three separate storage cupboards, allowing clutter-free living. The modern and integrated kitchen (semi-open plan) is equipped with appliances and ample worktop space to prepare meals. The highlight of this exceptional property is the reception and dining area, seamlessly flowing onto a private balcony. This outdoor space boasts views overlooking the tree-lined Scarlet Close road, facing South West.

Convenience is at your doorstep, with the renowned Queen Elizabeth Park just a stone's throw away. Shopping enthusiasts will appreciate the proximity to Westfield shopping centre, while superb connectivity is provided by Stratford International station and underground. East Village itself boasts an array of independent bars, restaurants, and cafes, offering a vibrant dining and social scene. Residents also benefit from a nearby gym and Sainsbury's supermarket.

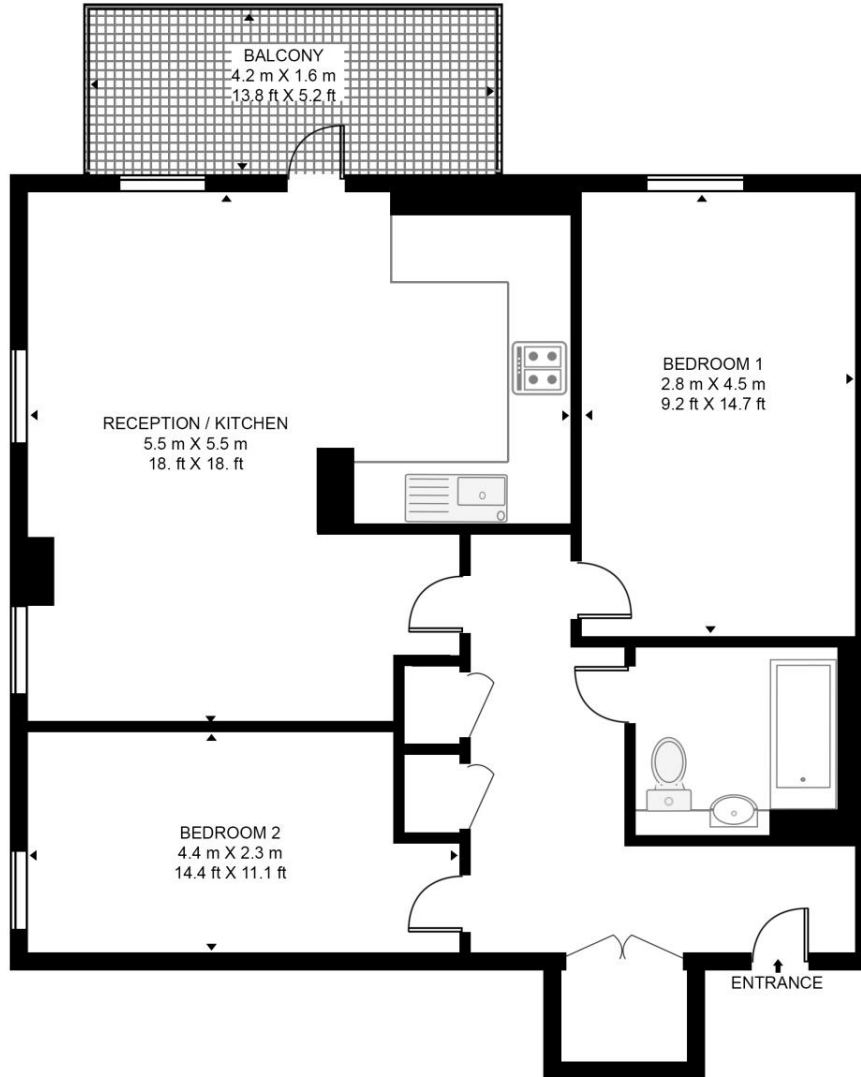
- Two double bedrooms
- One bathroom
- 5th Floor
- Private balcony
- Fantastic views
- East Village location
- Approx. 724 sq.ft (67.3 sq. m)
- Walking Distance to Stratford Station & Westfield
- EPC Rating B

# Floorplan

724 sq ft | 67 sq m

## ZELLER HOUSE

APPROXIMATE GROSS INTERNAL FLOOR AREA 724 SQ.FT (67.3 SQ.M)



FIFTH FLOOR



This floor plan has been defined by the RICS Code of Measurement. This floor plan and all others are for approximate representative purposes only and upon usage is agreed to as such by the client.

WWW: [hdvirtualart.com](http://hdvirtualart.com) | TEL: 0203.974.1567 | EMAIL: [info@hdvirtualart.com](mailto:info@hdvirtualart.com)

Stratford  
5 Station Street,  
London E15 1DA  
+4420 3147 1500  
[Lettingsstratford@eu.jll.com](mailto:Lettingsstratford@eu.jll.com)

*Urban living, your way.*

[jll.co.uk/residential](http://jll.co.uk/residential)

© 2019 Jones Lang LaSalle IP, Inc. All rights reserved. All information contained herein is from sources deemed reliable; however, no representation or warranty is made to the accuracy thereof.

