



Bruford Court, Deptford, London, SE8 3BP



## Bruford Court, Deptford, London, SE8

leasehold

***Benefitting from a parking space, well presented interiors & low service charges, this charming two bedroom second floor flat comes to market.***

### Key Features

- Two Double Bedrooms
- Balcony
- Parking Permit Available
- Well Presented Interiors
- Perfect First Home
- Well Positioned for Commuters
- Close to Deptford & Greenwich High Streets

The accommodation comprises; a welcoming entrance hallway with doors leading to all rooms. The reception room is a generous size at 14'9 x 14'6 with large balcony having been decorated in neutral tones by the current owners with a tasteful feature wall. The kitchen flows from the reception room and boasts an array of eye and base level units and integrated appliances. The main bedroom is a large double room with built-in wardrobes, and the second bedroom is a second small double also with built-in wardrobes. Completing this flat is the family bathroom with toilet, hand basin and bathtub.

Bruford Court is situated a short walk from both Deptford & Greenwich high streets offering a wide variety of shops, restaurants, and transport options, including both Cutty Sark & Deptford Stations allowing easy access into both The City and Canary Wharf, perfect for commuters. This fantastic property comes with the added benefit of a parking permit.









## Bruford Court

Approximate Gross Internal Area = 49.61 sq m / 534 sq ft

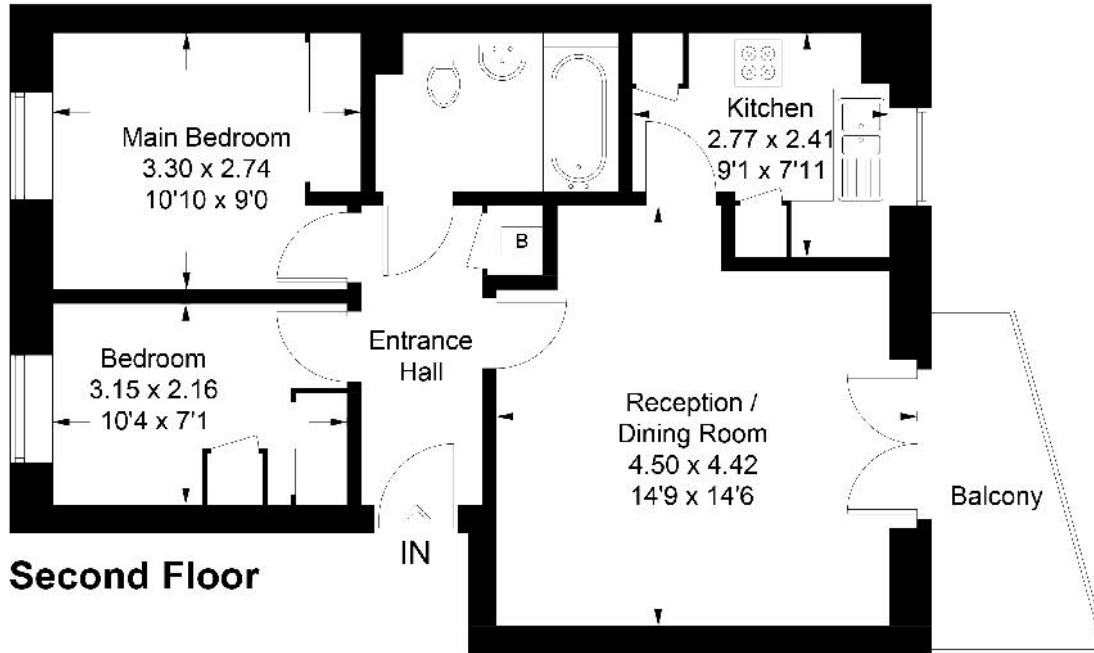


Illustration for identification purposes only, measurements are approximate, not to scale. floorplansUsketch.com © (ID1127701)

22 College Approach, Greenwich,  
London, SE10 9HY  
Tel: 020 7399 5595

**Sales, Lettings & Property Management**

[residential.jll.co.uk](http://residential.jll.co.uk)

