



## Walton Street, London SW3

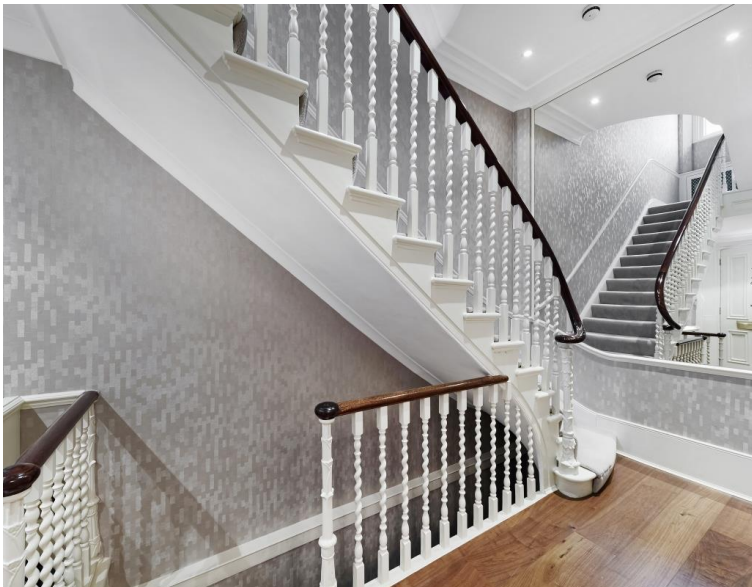
Price £4,700 per week - Unfurnished











## Description

A handsome, white stucco fronted house situated in this exclusive and convenient location within a few minutes walk of Harrods. The property comprises master bedroom with en suite bathroom and dressing room, two further double bedrooms with en suite bathrooms, fourth double bedroom, single bedroom/study, family bathroom, guest cloakroom, double reception room, dining room and kitchen with conservatory breakfast area. The house also boasts a pretty patio garden.

Rent is payable on a monthly basis and you may be required to pay more than a month's rent in advance, depending on your circumstances. You will be required to pay a 1 week holding deposit following a successful offer. Utility bills, council tax, telephone line and broadband are not included in the rent. As well as paying the rent, you may also be required to make some additional permitted payments. If your tenancy does not qualify as an AST, additional fees may apply. Please visit [jll.co.uk/fees](http://jll.co.uk/fees) for details of fees which may be payable when renting a property.

- Unfurnished house
- Five Bedrooms
- Four Bathrooms
- Double Reception room
- Dining room
- Kitchen/breakfast room
- Garden
- Approx. 2,949 sq ft (274 sq m)
- EPC: D
- Council tax: Band H

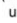
# Floorplan

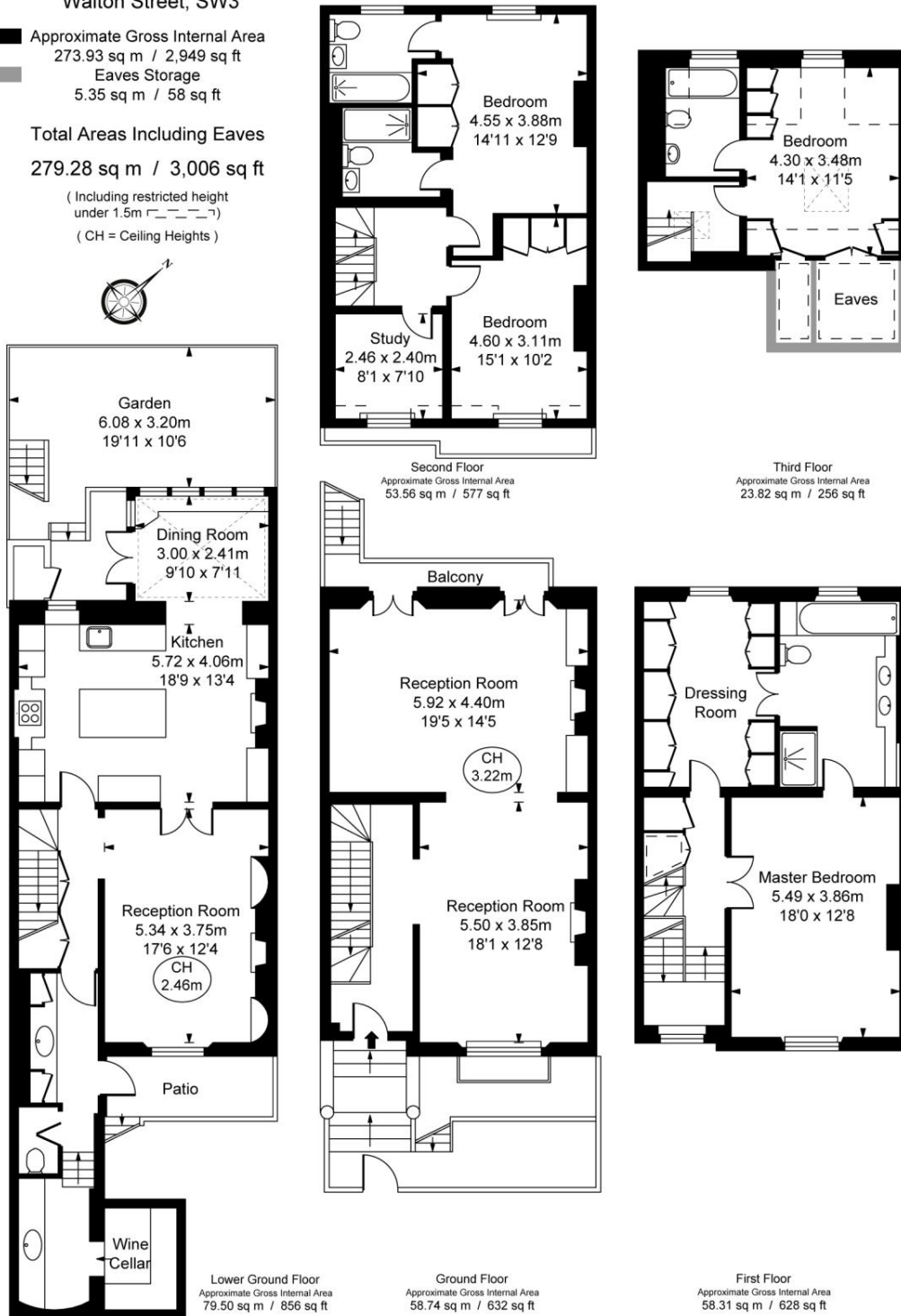
2,949 sq ft | 274 sq m

Walton Street, SW3

- Approximate Gross Internal Area  
273.93 sq m / 2,949 sq ft
- Eaves Storage  
5.35 sq m / 58 sq ft

Total Areas Including Eaves  
279.28 sq m / 3,006 sq ft

(Including restricted height  
under 1.5m )  
(CH = Ceiling Heights)



This plan is not to scale. It is for guidance and not for valuation purposes.  
All measurements and areas are approximate only, and have been prepared in accordance with the current edition of the RICS Code of Measuring Practice.  
© Fulham Performance

Knightsbridge  
174 Brompton Road,  
London SW3 1HP  
+4420 7306 1600  
SalesKnightsbridge@jll.com

*Urban living, your way.*

[jll.co.uk/residential](http://jll.co.uk/residential)

© 2019 Jones Lang LaSalle IP, Inc. All rights reserved. All information contained herein is from sources deemed reliable; however, no representation or warranty is made to the accuracy thereof.

