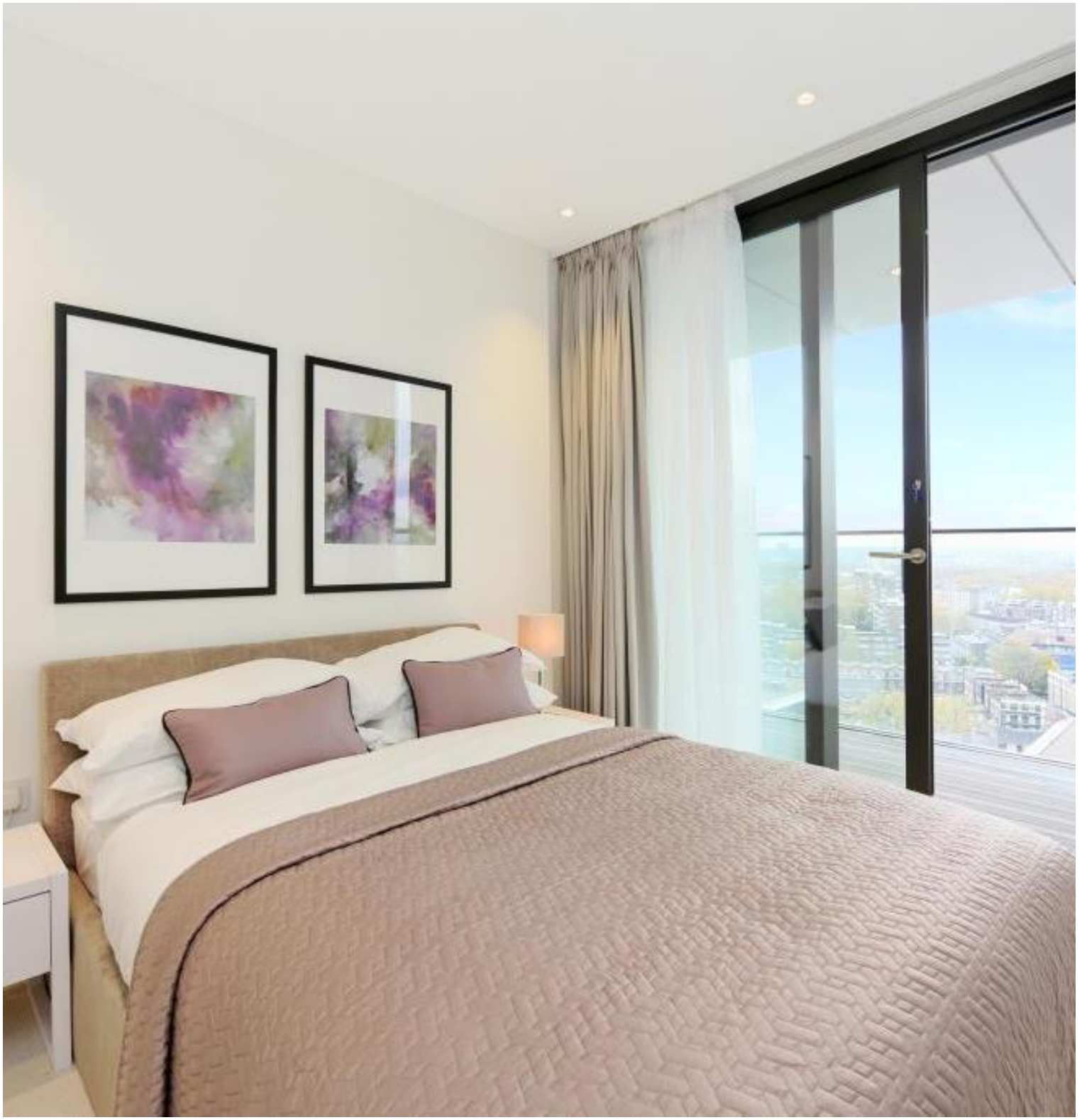




Merchant Square, London W2

Price £1,325 per week - Furnished







Description

A stunning sixteenth floor apartment (with lift) in this new development within Paddington Basin. The property consists of master bedroom with en suite bathroom, second double bedroom with en suite shower room, reception room and a fully fitted, open plan kitchen. Further benefits include underfloor heating, air conditioning, a terrace offering amazing views of the London skyline and 24 hour concierge. Adjacent to the Grand Union Canal, Merchant Square is a new development and it is conveniently located moments from the transport and shopping amenities of Paddington.

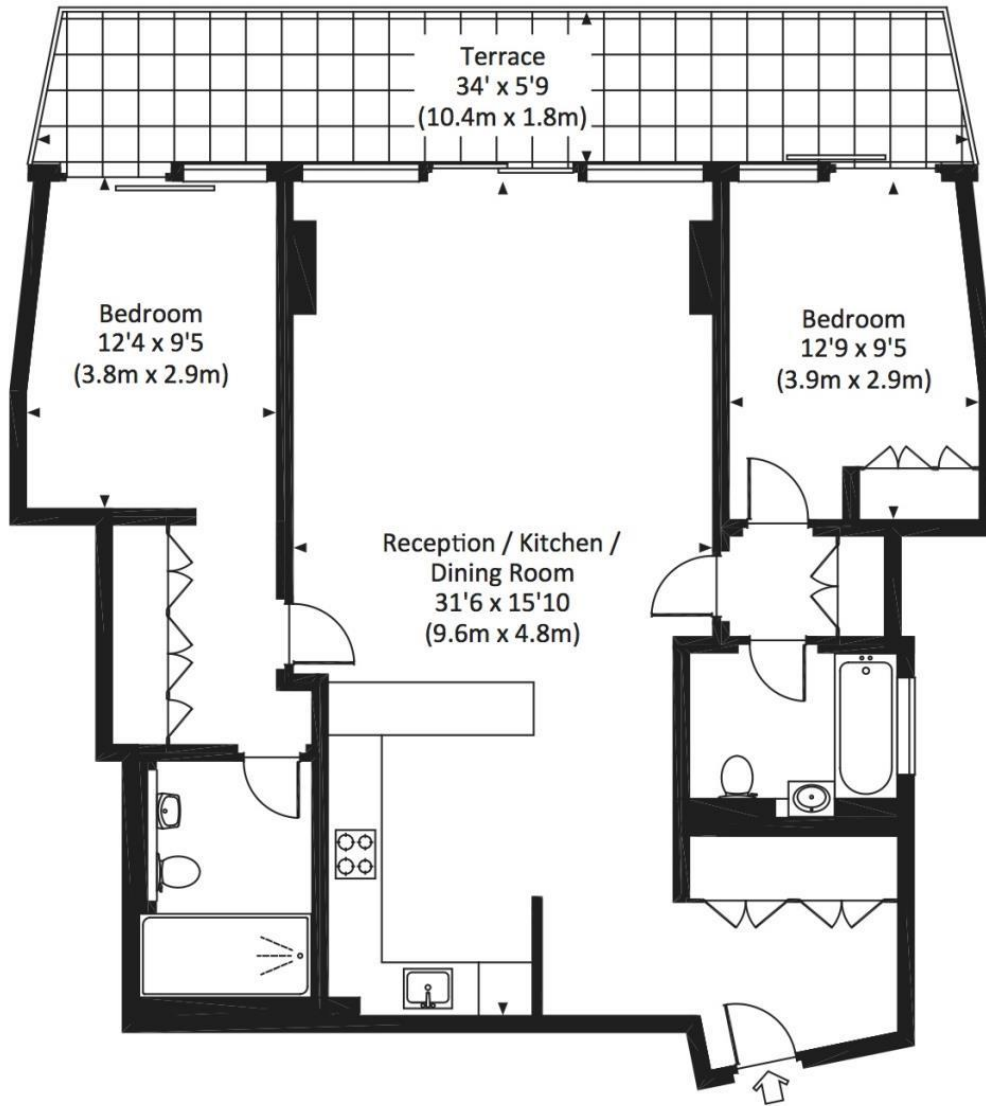
Rent is payable on a monthly basis and you may be required to pay more than a month's rent in advance, depending on your circumstances. You will be required to pay a 1 week holding deposit following a successful offer. Utility bills, council tax, telephone line and broadband are not included in the rent. As well as paying the rent, you may also be required to make some additional permitted payments. If your tenancy does not qualify as an AST, additional fees may apply. Please visit jll.co.uk/fees for details of fees which may be payable when renting a property.

- 2 Bedrooms
- 2 Bathrooms
- Concierge
- Lift
- Canalside living
- Terrace
- Approx 999 sq ft (93 sq m)
- Furnished
- EPC: B
- Council tax: Band F

Floorplan

999 sq ft | 93 sq m

Approx. gross internal area
999 Sq Ft. / 92.8 Sq M.



SIXTEENTH FLOOR



All measurements are approximate and for illustration purposes only as defined by the RICS Code of Measuring Practice © 2014
Dowling Jones Design www.dowlingjones.com 020 7610 9933

Kensington
387 Kensington High Street,
London W14 8QA
+4420 7087 5696
lettingskensington@eu.jll.com

Urban living, your way.

jll.co.uk/residential

© 2019 Jones Lang LaSalle IP, Inc. All rights reserved. All information contained herein is from sources deemed reliable; however, no representation or warranty is made to the accuracy thereof.

