



# Gloucester Street, London SW1V

Price £650 per week - Part Furnished







## Description

A beautifully presented two bedroom apartment in this quiet side road located in the Pimlico Grid, and convenient for Victoria Station and Pimlico Underground Station.

The apartment comprises two double bedrooms, one bathroom, and spacious reception room with open plan kitchen. The apartment is situated within walking distance of Victoria station and the surrounding shops and restaurants.

Rent is payable on a monthly basis and you may be required to pay more than a month's rent in advance, depending on your circumstances. You will be required to pay a 1 week holding deposit following a successful offer. Utility bills, council tax, telephone line and broadband are not included in the rent. As well as paying the rent, you may also be required to make some additional permitted payments. If your tenancy does not qualify as an AST, additional fees may apply. Please visit [jll.co.uk/fees](http://jll.co.uk/fees) for details of fees which may be payable when renting a property.

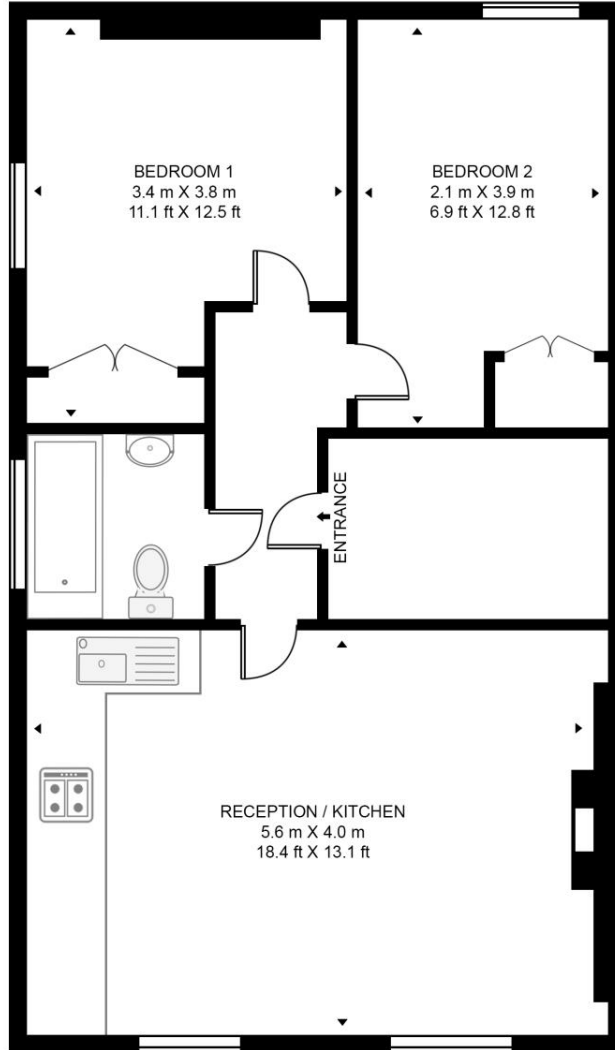
- Two double bedrooms
- One bathroom
- Open plan kitchen with reception room
- Third floor
- Part-furnished
- EPC: D
- Council tax: Band F
- Deposit amount: £3,250.00 (estimate) and an initial holding deposit of 1 week's rent is payable to

# Floorplan

sq ft | sq m

## GLOUCESTER STREET

APPROXIMATE GROSS INTERNAL FLOOR AREA 592 SQ.FT (55 SQ.M)



THIRD FLOOR



This floor plan has been defined by the RICS Code of Measurement. This floor plan and all others are for approximate representative purposes only and upon usage is agreed to as such by the client.

WWW: [hdvirtualart.com](http://hdvirtualart.com) | TEL: 0203.974.1567 | EMAIL: [info@hdvirtualart.com](mailto:info@hdvirtualart.com)

Knightsbridge  
174 Brompton Road,  
London SW3 1HP  
+4420 7306 1600  
[SalesKnightsbridge@jll.com](mailto:SalesKnightsbridge@jll.com)

*Urban living, your way.*

[jll.co.uk/residential](http://jll.co.uk/residential)

© 2019 Jones Lang LaSalle IP, Inc. All rights reserved. All information contained herein is from sources deemed reliable; however, no representation or warranty is made to the accuracy thereof.

