



Cedars Road, London SW4

Guide price £400,000 Leasehold





Description

Set on the second floor of a Victorian building this well presented and recently refurbished property boasts a communal garden, double glazed windows and a contemporary finish throughout.

Comprising of a reception room which opens up onto a modern kitchen, double bedroom and modern bathroom.

Residents benefit from a well kept and private communal garden.

Cedars Road is situated moments from the shops, cafés, bars and restaurants of Clapham Old Town, Clapham High Street and the green open spaces of Clapham Common.

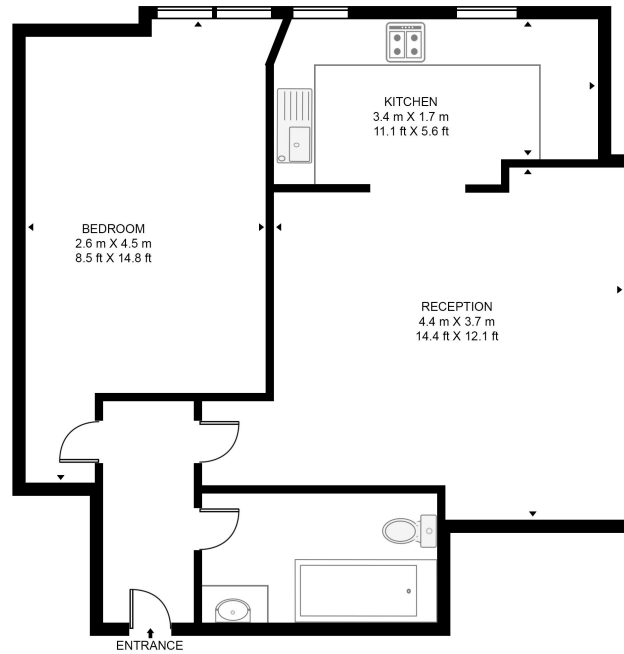
Transport links include Clapham Common Underground station (Northern Line) and numerous bus services providing direct links to the City, West End and outer London.

- 1 Bedroom
- 1 Bathroom
- Clapham Common
- Recently refurbished
- Communal Garden
- 383 sq ft (35.6 sq m)
- No onward chain
- EPC: C



CEDARS ROAD

APPROXIMATE GROSS INTERNAL FLOOR AREA 383 SQ.FT (35.6 SQ.M)



SECOND FLOOR

HDVA

This floor plan has been defined by the RICS Code of Measurement. This floor plan and all others are for approximate representative purposes only and upon usage is agreed to as such by the client.
WWW: hdvirtualart.com | TEL: 0203.974.1567 | EMAIL: info@hdvirtualart.com

Nine Elms
4 Riverlight Quay,
London SW11 8DG
+4420 3147 1333
lettingsnineelms@eu.jll.com

Urban living, your way.

jll.co.uk/residential

© 2019 Jones Lang LaSalle IP, Inc. All rights reserved. All information contained herein is from sources deemed reliable; however, no representation or warranty is made to the accuracy thereof.

