



SADDLERS HOUSE, RIBBONS WALK, E20





Proud to offer this contemporary 1-bedroom apartment located in the Olympic Village, Stratford.

The property boasts modern finishes throughout, with an open-plan living area that maximises space and natural light. The kitchen is equipped with high-quality appliances, perfect for both everyday meals and entertaining guests. The bedroom provides a tranquil retreat, while the bathroom features stylish fixtures and fittings. Additional storage solutions ensure that you can make the most of the available space.

This well-appointed apartment is ideally positioned to take advantage of Stratford's vibrant atmosphere and excellent transport links. With the Queen Elizabeth Olympic Park, Westfield Stratford City, and numerous cultural attractions on your doorstep, you'll never be short of things to do.

Saddlers House residents benefit from the development's prime location, with easy access to Stratford station, offering swift connections to central London and beyond via the Central, Elizabeth and Jubilee lines, DLR, and Overground services.

Whether you're a young professional seeking a stylish pied-à-terre or looking for your first home in a dynamic London neighbourhood, Saddlers House offers an excellent opportunity to experience the best of East London living.

Years remaining on lease: 114, Service charge: £2,762.88pa, Ground rent: £250pa, Council tax band: C

PRICE

OIEO £450,000

GROSS INTERNAL AREA

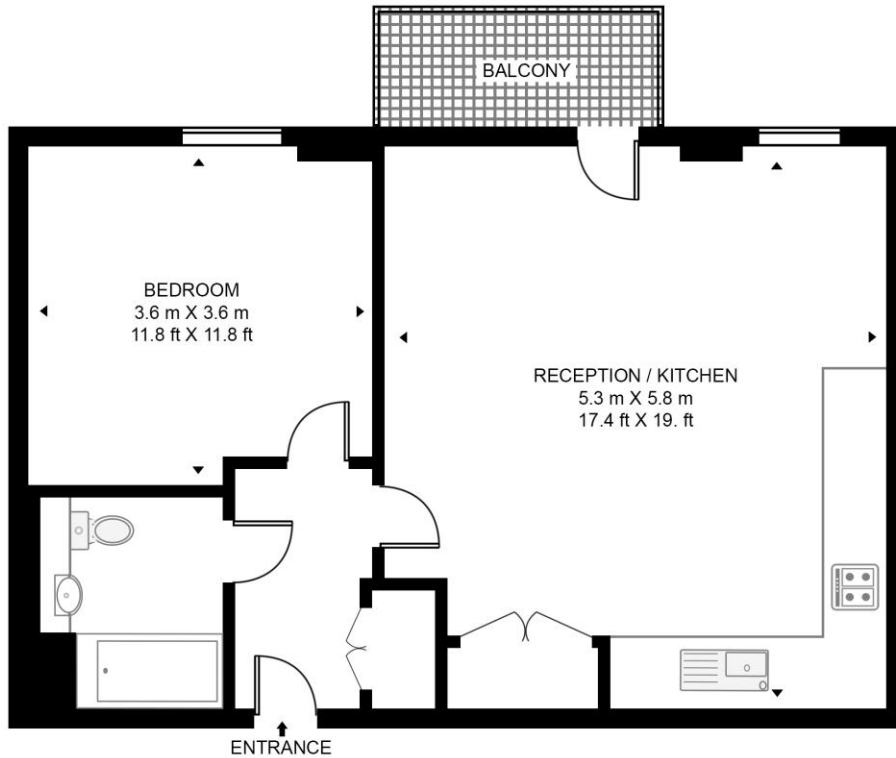
549 sq. ft (51 sq. m)

- One bedroom
- Balcony
- 6th Floor
- Approx. 549 sq. ft (51 sq. m)
- 0.4 miles from Stratford Station
- Moments away from Queen Elizabeth Olympic Park and Westfield
- EPC Rating B

FOR MORE INFORMATION CALL +44 (0) 208 463 6755 OR EMAIL stratfordsales@eu.jll.com

SADDLERS HOUSE

APPROXIMATE GROSS INTERNAL FLOOR AREA 549 SQ.FT (51 SQ.M)



SIXTH FLOOR



This floor plan has been defined by the RICS Code of Measurement. This floor plan and all others are for approximate representative purposes only and upon usage is agreed to as such by the client.

WWW: hdvirtualart.com | TEL: 0203.974.1567 | EMAIL: info@hdvirtualart.com

Unex Tower
5 Station Street
London
E15 1DA

These particulars are for general information only and do not constitute any part of an offer or contract. All statements contained therein are made without responsibility on the part of the vendors or lessors and are not to be relied upon as statement or representation of fact. Intending purchasers or lessees must satisfy themselves, by inspection, or otherwise, as to the correctness of each of the statements or dimensions contained in these particulars..