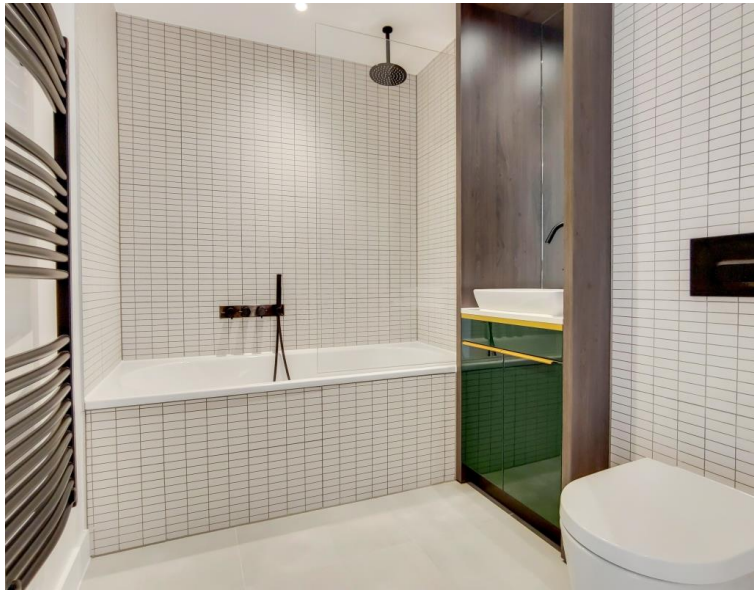
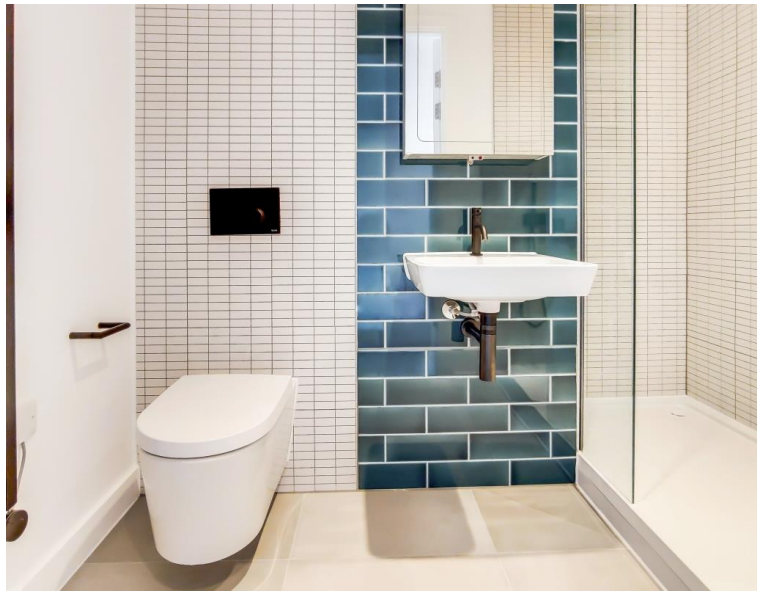
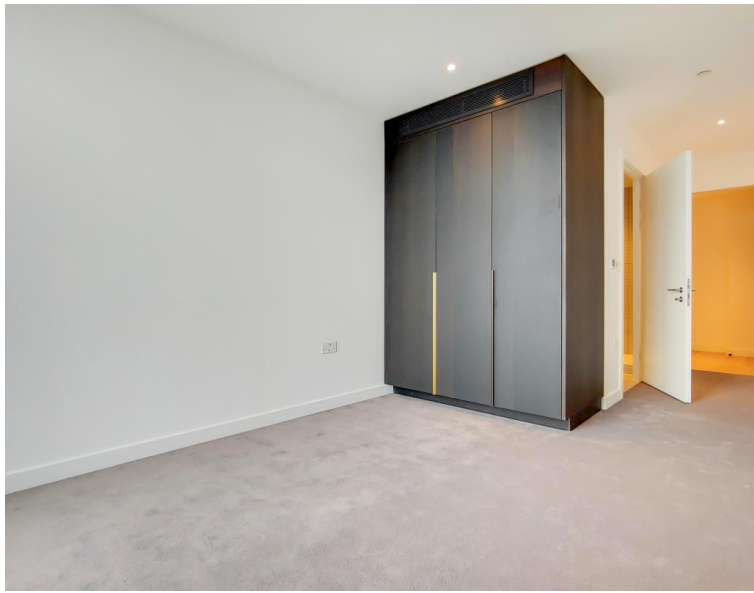


Jasper Walk, London N1
£942,165 Leasehold







Description

Set on the 6th floor, and extending to an impressive 918sq ft (inc winter garden) the apartment offers a good-sized dual aspect open plan style reception room with luxury finished fully fitted kitchen, winter garden and floor to ceiling windows offering roof top views with a South-westerly aspect. A principal bedroom suite, with fitted wardrobes has access to en suite shower room, whilst a sizeable second bedrooms has excellent wardrobe space and an offers a Southerly aspect. A family bathroom suite and separate storage cupboards are located off a welcoming hallway with flowing natural light.

The City collection is a uniquely placed retreat, tucked away from City road between the City of London's financial District and the vigour and vibrancy of Shoreditch. Residents benefit from a wealth of facilities available including a 24 hour concierge, secure access to communal areas, communal roof garden, basement cycle storage (with enough spaces for for 335 bicycles), gym and separate treatment rooms a screening room with a bespoke facility through the concierge. The City Collection is located within close proximity to underground links such as Old Street Station and Angel as well as London Overground services from Shoreditch High Street Station.

Leasehold 992 years (exp. 31/12/3017)

- 2 Bedrooms
- 2 Bathrooms
- Winter garden with 6th floor views
- South East aspect
- Close to underground links
- On-site amenities such as gym and pool
- 24 Hour concierge
- Views over Canary Wharf - City Skyline
- Approx. 930 sq ft / 86.4 sq m incl. winter garden

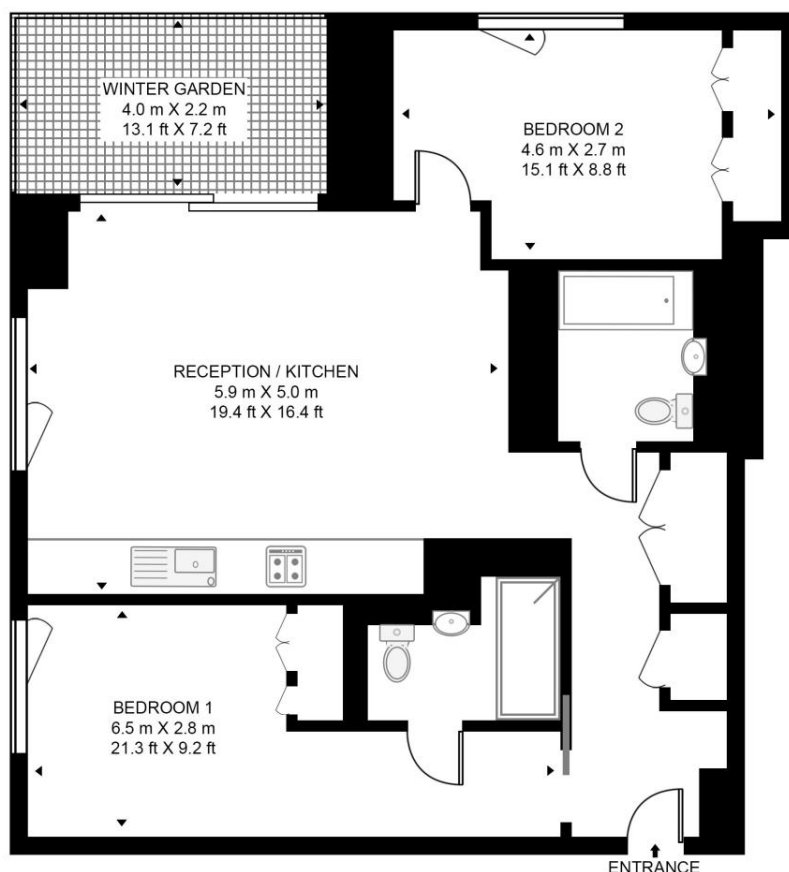
Floorplan

840 sq ft | 78 sq m

THE MAKERS

APPROXIMATE GROSS INTERNAL FLOOR AREA 840 SQ.FT (78 SQ.M)

(INCLUDING WINTER GARDEN 930 SQ.FT (86.4 SQ.M))



SIXTH FLOOR



This floor plan has been defined by the RICS Code of Measurement. This floor plan and all others are for approximate representative purposes only and upon usage is agreed to as such by the client.

WWW: hdvirtualart.com | TEL: 0203.974.1567 | EMAIL: info@hdvirtualart.com

City
25 Walbrook The Walbrook
Building,
London EC4N 8AF
+4420 7337 4000

Urban living, your way.

jll.co.uk/residential

© 2019 Jones Lang LaSalle IP, Inc. All rights reserved. All information contained herein is from sources deemed reliable; however, no representation or warranty is made to the accuracy thereof.

