

Ossington Buildings, London W1U

Price £675 per week - Furnished, Unfurnished







Description

A delightful apartment with two generous sized bedrooms, spacious reception area, separate modern kitchen and family bathroom. It benefits from wooden flooring throughout. Fibre Optic Broadband is included in the rent and the property is professionally managed by the Howard De Walden Estate.

Having your property professionally managed by The Howard de Walden Estate not only offers exceptional levels of service and high quality, professional property management.

Marylebone Village is one of central London's most distinctive and characterful shopping destinations, home to a high proportion of small, independent businesses. Residents of HDWE also benefit from access to an array of discounts within Marylebone Village, resident social opportunities and local events which make Marylebone Village a unique and vibrant place to call home.

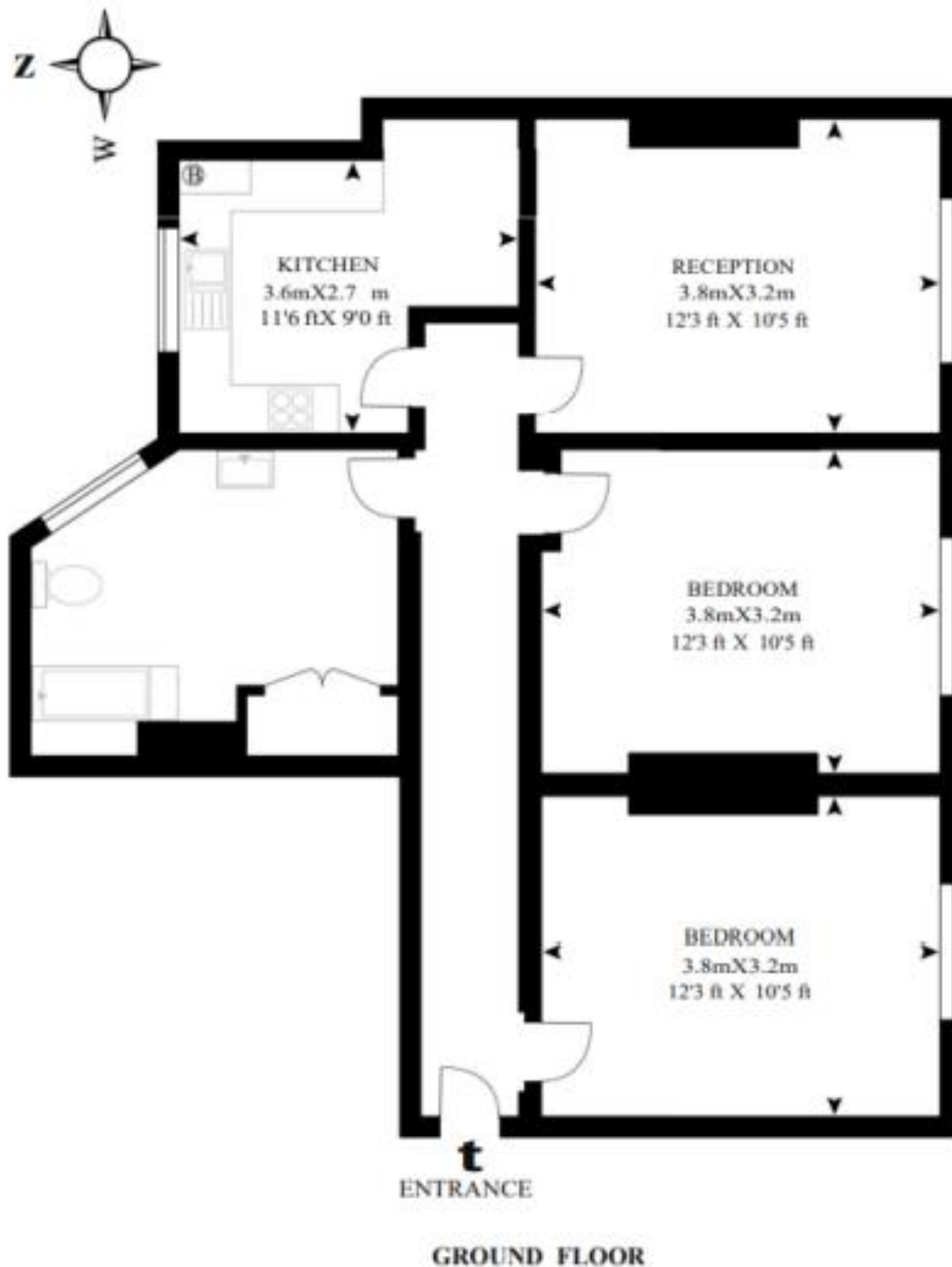
Rent is payable on a monthly basis and you may be required to pay more than a month's rent in advance, depending on your circumstances. You will be required to pay a 1 week holding deposit following a successful offer. Utility bills, council tax, telephone line and broadband are not included in the rent. As well as paying the rent, you may also be required to make some additional permitted payments. If your tenancy does not q

- 2 double bedrooms
- Reception room
- Kitchen
- Family bathroom
- Unfurnished or furnished via separate negotiation
- EPC: D
- Council tax: Band D
- Deposit amount: £3,375 (estimate) and an initial holding deposit of 1 week's rent is payable to rese

Floorplan

678 sq ft | 63 sq m

APPROX GROSS INTERNAL FLOOR AREA 678 SQ.FT (63 SQ.M.)



Mayfair and Marylebone
St George Street,
London W1S 2FQ
+44 207 399 5550
mayfair@jll.com

Urban living, your way.

jll.co.uk/residential

© 2019 Jones Lang LaSalle IP, Inc. All rights reserved. All information contained herein is from sources deemed reliable; however, no representation or warranty is made to the accuracy thereof.

