

# Brompton Square, London SW3

Price £4,500 per week - Unfurnished











## Description

A beautifully refurbished 6 bedroom family house quietly situated on this prestigious Knightsbridge garden square. The house comprises master bedroom with en suite bathroom, four further double bedrooms, one further bathroom, shower room, steam room, guest cloakroom, three double reception rooms, kitchen/breakfast room and a private garden. The property is spread over 3,500 sq ft and it has been modernised in a light and contemporary style.

Rent is payable on a monthly basis and you may be required to pay more than a month's rent in advance, depending on your circumstances. You will be required to pay a 1 week holding deposit following a successful offer. Utility bills, council tax, telephone line and broadband are not included in the rent. As well as paying the rent, you may also be required to make some additional permitted payments. If your tenancy does not qualify as an AST, additional fees may apply. Please visit [jll.co.uk/fees](http://jll.co.uk/fees) for details of fees which may be payable when renting a property.

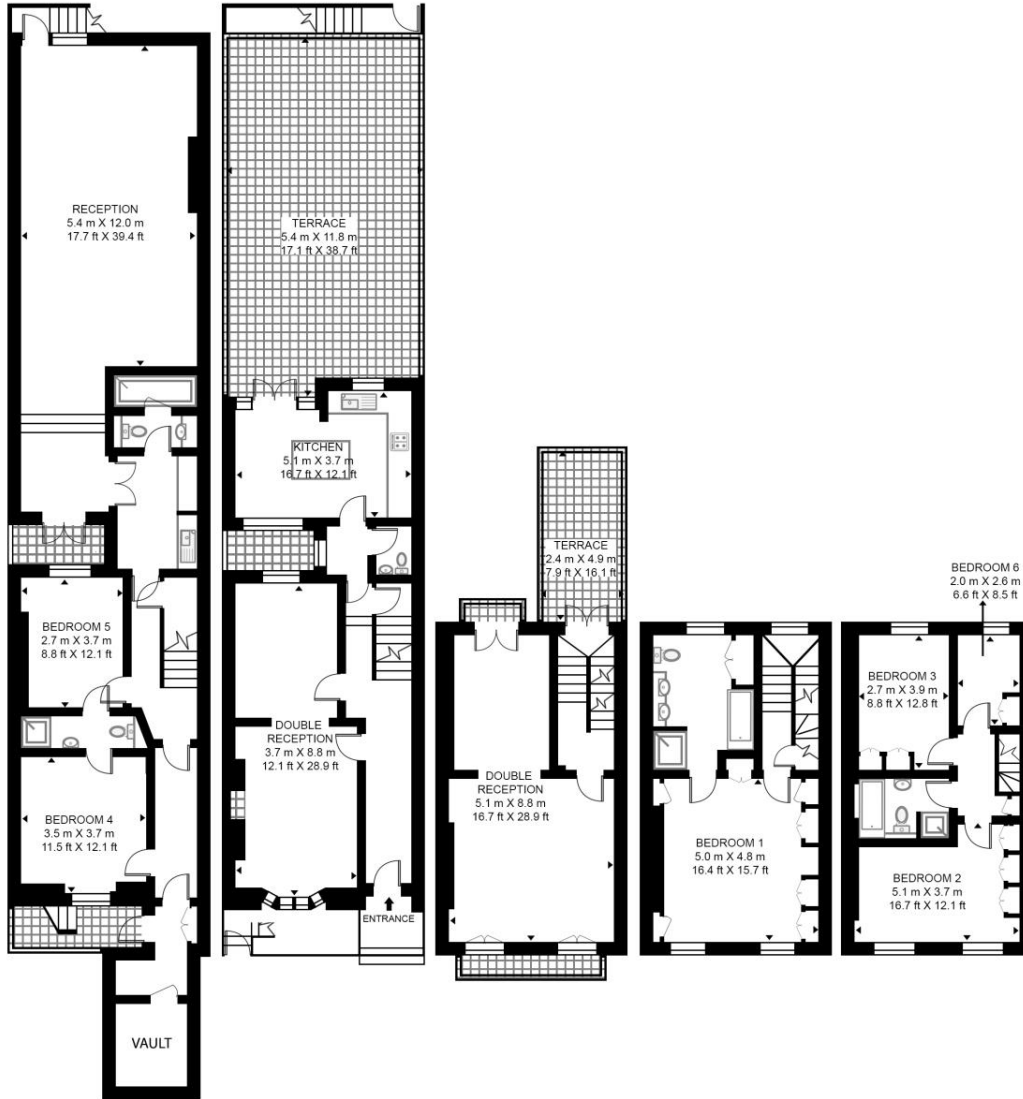
- 6 bedroom refurbished house
- Unfurnished
- 4 reception rooms and 4 bathrooms
- Kitchen/ breakfast room
- 600 sq ft garden
- Guest cloakroom
- Steam room
- Approx. 3548 sq ft (329 sq m)
- EPC: D
- Council Tax: Band H

# Floorplan

3,548 sq ft | 330 sq m

## BROMPTON SQUARE

APPROXIMATE GROSS INTERNAL FLOOR AREA 3548 SQ.FT (329.6 SQ.M)



LOWER GROUND FLOOR

RAISED GROUND FLOOR

FIRST FLOOR

SECOND FLOOR

THIRD FLOOR



This floor plan has been defined by the RICS Code of Measurement. This floor plan and all others are for approximate representative purposes only and upon usage is agreed to as such by the client.

WWW: [hdvirtualart.com](http://hdvirtualart.com) | TEL: 0203.974.1567 | EMAIL: [info@hdvirtualart.com](mailto:info@hdvirtualart.com)

Chelsea  
2 Cale Street,  
London SW3 3QU  
+4420 7399 5010  
[saleschelsea@jll.com](mailto:saleschelsea@jll.com)

*Urban living, your way.*

[jll.co.uk/residential](http://jll.co.uk/residential)

© 2019 Jones Lang LaSalle IP, Inc. All rights reserved. All information contained herein is from sources deemed reliable; however, no representation or warranty is made to the accuracy thereof.

