



Ormonde Gate, London SW3

Price £435 per week - Unfurnished







Description

A spacious and well presented studio on the raised ground floor of this period building on the corner of Royal Hospital Road. The property consists of reception/bedroom, bathroom and a fully fitted kitchen. The reception boasts a large bay window overlooking Burton Court and the heating and hot water is included in the rent. The property is located only a few minutes' walk from the King's Road and Sloane Square underground station.

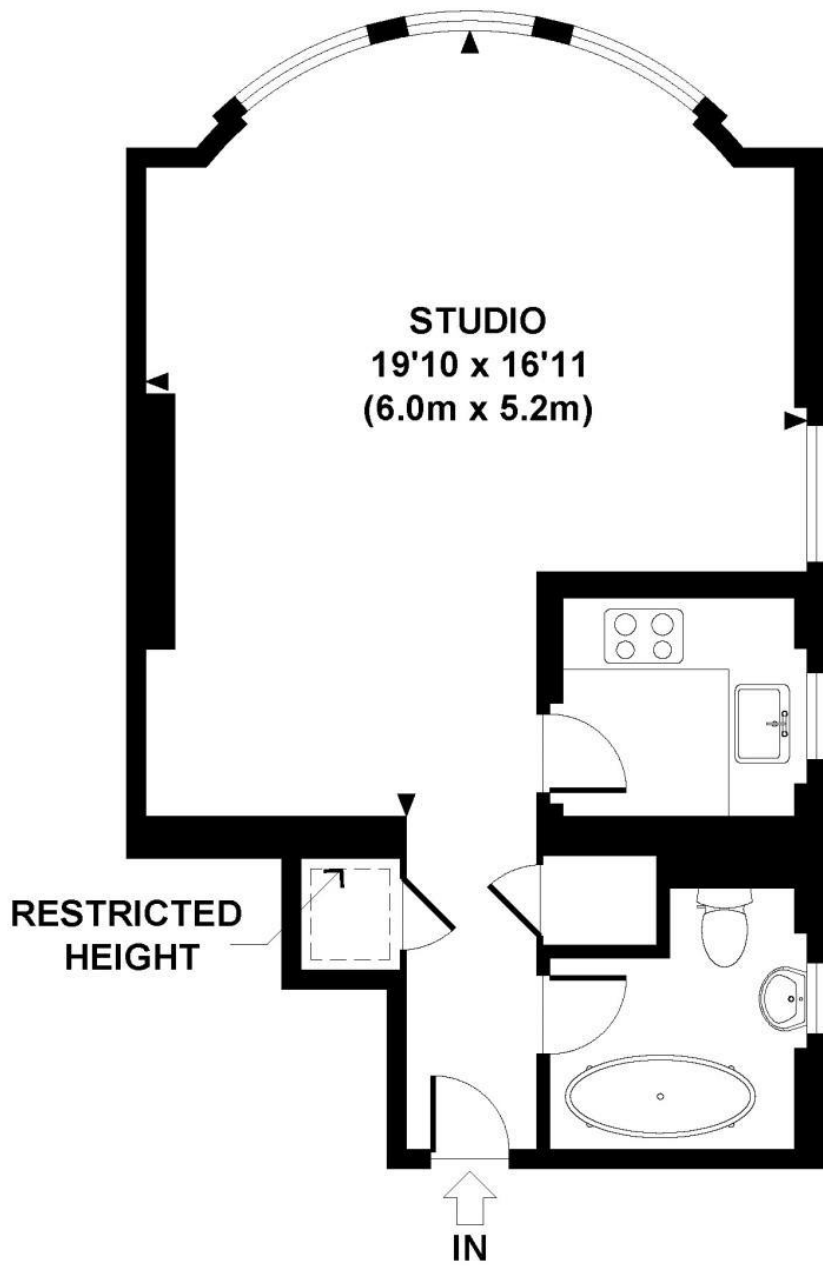
Rent is payable on a monthly basis and you may be required to pay more than a month's rent in advance, depending on your circumstances. You will be required to pay a 1 week holding deposit following a successful offer. Utility bills, council tax, telephone line and broadband are not included in the rent. As well as paying the rent, you may also be required to make some additional permitted payments. If your tenancy does not qualify as an AST, additional fees may apply. Please visit jll.co.uk/fees for details of fees which may be payable when renting a property.

- Reception room/bedroom
- Bathroom
- Fully fitted kitchen
- Raised Ground Floor
- Heating & hot water inclusive
- Approx. 401 sq ft (37 sq m)
- Unfurnished
- EPC: E
- Council Tax: Band E
- Deposit: £2,175

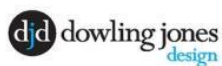
Floorplan

401 sq ft | 37 sq m

Approx. gross internal area
401 Sq.Ft. / 37 Sq.M.



RAISED GROUND FLOOR



Chelsea
2 Cale Street,
London SW3 3QU
+4420 7399 5010
saleschelsea@jll.com

Urban living, your way.

jll.co.uk/residential

© 2019 Jones Lang LaSalle IP, Inc. All rights reserved. All information contained herein is from sources deemed reliable; however, no representation or warranty is made to the accuracy thereof.

