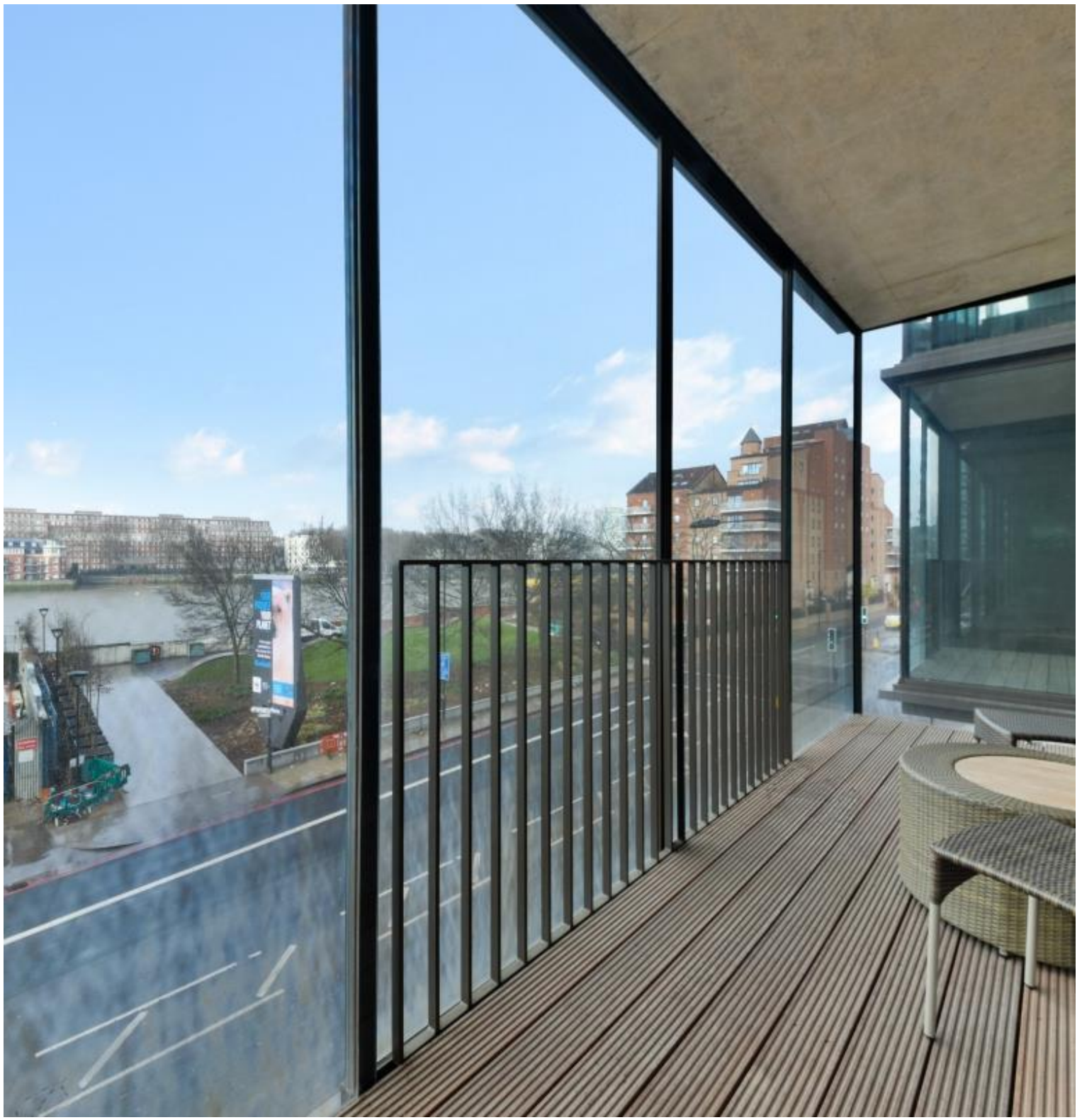




New Union Square, London SW11

Asking price £1,185,000 Leasehold







Description

A modern and beautifully presented two bedrooms, two bathrooms on the second floor in Embassy Gardens near Vauxhall, with resident facilities including gym, pool, cinema, spa, concierge, lounge, meeting room and lobby.

Finished to a high standard this naturally bright apartment comprises of an open plan kitchen / reception room with floor to ceiling windows and a matching door that leads onto a private west-facing balcony overlooking the River Thames. Two double bedrooms, the master has fitted wardrobes and a stunning marble en-suite bathroom and access onto a separate private balcony. Bedroom two also has fitted wardrobes and access onto the main private balcony shared with the reception room. A family bathroom finishes off the property.

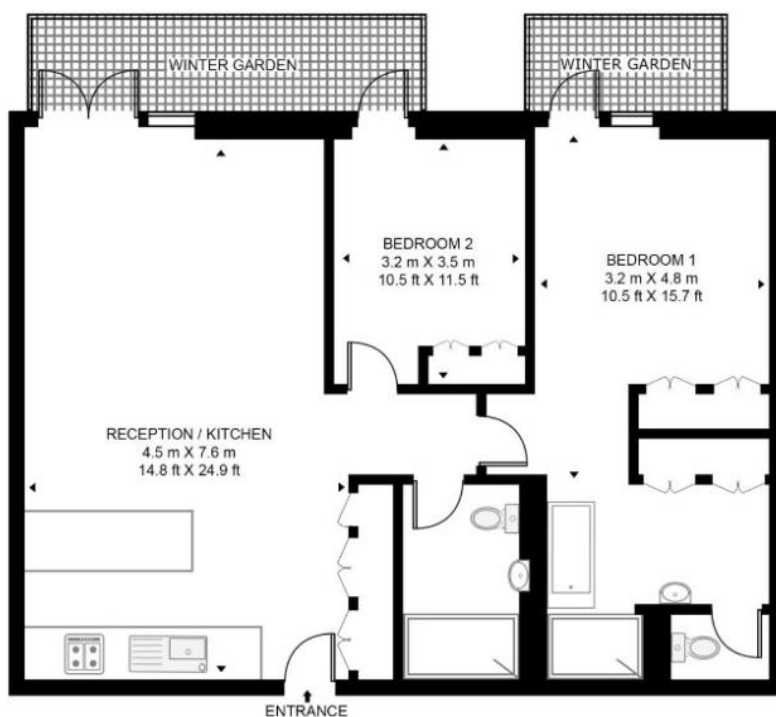
All Embassy Gardens residents gain exclusive membership to the Le Club which grants residents and their guests access to the Sky Deck with Sky Pool and Orangery rooftop bar, Maureen O'Hara private cinema, Belmont Gym and so much more. Residents at Embassy Gardens are able to float through the air in the world's only Sky Pool. Spanning the Embassy Gardens' Legacy Buildings, the Sky Pool is the world's first 'floating' swimming pool.

- 2 Double bedrooms
- 2 Bathrooms
- 2 Balconies
- 2nd Floor modern apartment
- Private West-facing balcony with river views
- Beautifully presented throughout
- Approx. 1,021 sq ft (94.9 sq m)
- Leasehold (985 years remaining)
- EPC: B

Floorplan

1,021 sq ft | 95 sq m

AMBASSADOR BUILDING, EMBASSY GARDENS
APPROXIMATE GROSS INTERNAL FLOOR AREA 879 SQ.FT (81.7 SQ.M)
(INCLUDING WINTER GARDEN 1021 SQ.FT (94.9 SQ.M))



SECOND FLOOR

This floor plan has been defined by the RICS Code of Measurement. This floor plan and all others are for approximate representative purposes only and upon usage is agreed to as such by the client.
WWW: hdvirtualart.com | TEL: 0203.974.1567 | EMAIL: info@hdvirtualart.com

Nine Elms
4 Riverlight Quay,
London SW11 8DG
+4420 3147 1333
lettingsnineelms@eu.jll.com

Urban living, your way.

jll.co.uk/residential

© 2019 Jones Lang LaSalle IP, Inc. All rights reserved. All information contained herein is from sources deemed reliable; however, no representation or warranty is made to the accuracy thereof.

