



Arlington Street, London SW1A

Price £10,000 per week - Furnished





Description

The penthouse is located on a quiet street off Piccadilly close to the Ritz Hotel offering discretion and security with 24hr concierge service and direct lift access into the apartment.

Arranged over the 5th, 6th, and 7th floors the apartment has over 3,000sqft / 297sqm of living space. Entering on the 6th floor you have fully fitted modern kitchen with a large kitchen island, you also have a spacious reception room and dining area which leads out on to the private terrace and guest WC.

Heading down to the 5th floor via the spiral staircase with a stunning double height chandelier in the centre, you have the primary suite with dressing area and en-suite bathroom, you also have two further double bedrooms with en-suite bathrooms.

From the kitchen area on the 6th floor, you have the stairs leading up to the incredible south facing private terrace. This is a special terrace with several seat areas for relaxing, dining and a built-in BBQ with island seating, which a fully work sink and fridge. The views are spectacular taking in several of London's famous Landmarks.

This apartment has been interior designed and finished to the highest standard including bespoke furnishings, marble bathrooms, cashmere carpets and Italian wallpaper.

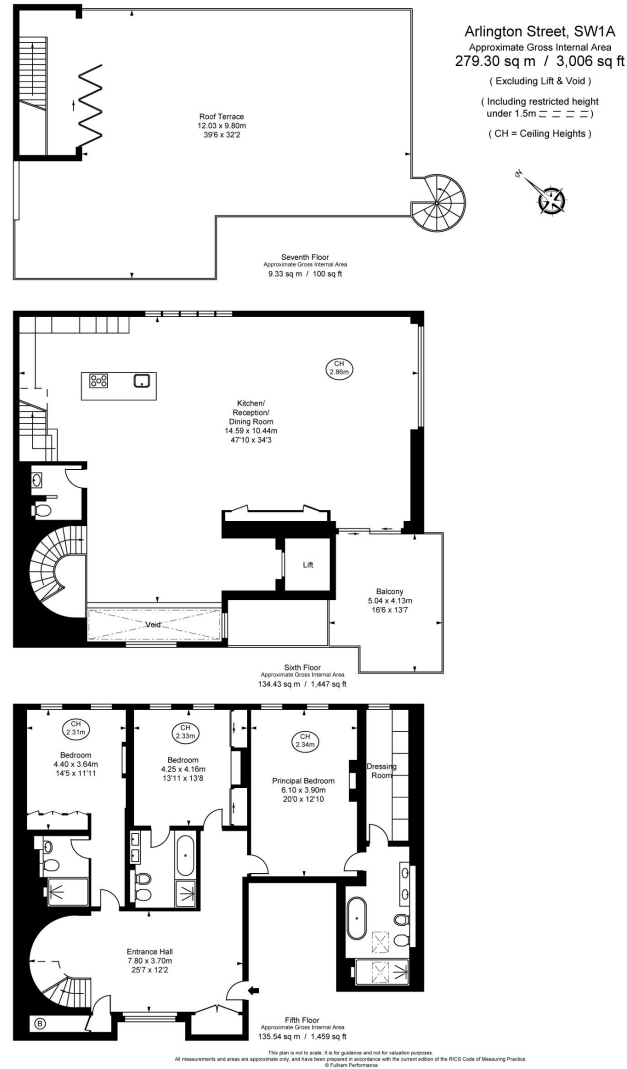
Rent is payable on a monthly basis and you may be required to pay more than a month's rent in advance, depending on your circumstances. You will be required to pay a 1 week holding deposit following a successful offer. Utility bills, council tax, telephone line and broadband are not included in the rent. As well as paying the rent, you may also be required to make some additional permitted payments. If your tenancy does not qualify as an AST, additional fees may apply. Please visit jll.co.uk/fees for details of fees which may be payable when renting a property.

- Penthouse Apartment
- 24hr Concierge Service
- Direct Lift Access
- Approx. 3,0006 sqft / 6279 sqm
- Arrange over 3 Floors
- Stunning Roof Terrace
- Interior Designed
- Three Bedrooms
- Furnished
- Council tax: Band H



Floorplan

3,006 sq ft | 279 sq m



Mayfair and Marylebone
St George Street,
London W1S 2FQ
+44 207 399 5550
mayfair@jll.com

Urban living, your way.

jll.co.uk/residential

© 2019 Jones Lang LaSalle IP, Inc. All rights reserved. All information contained herein is from sources deemed reliable; however, no representation or warranty is made to the accuracy thereof.

