

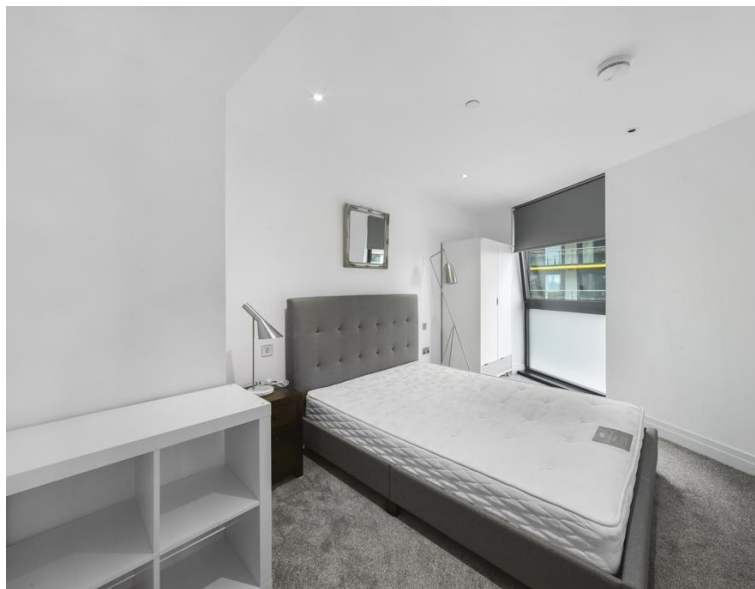


# Riverlight Quay, London SW11

Asking price £1,150,000 Leasehold









## Description

A bright and modern 2 bedroom, 2 bathroom apartment with views of The River Thames and an allocated parking space Riverlight Quay, a luxury development in Nine elms close to Battersea Power station and Battersea Park. The development benefits from a great range of amenities including a 24 hour concierge, residents gym, pool and spa. Residents virtual golf, digital entertainment suite and reading lounge.

The apartment comprises; large entrance hall with built in cupboard, an open plan reception with fully fitted kitchen with access onto a private balcony, master bedroom with fitted wardrobes and en suite shower room with access on a separate private balcony, The second bedroom is also a double and a contemporary family bathroom finishes off the property.

The property also benefits from a parking space.

The development offers residents a great range of amenities including a 24 hour concierge, residents gym, pool and spa. Residents virtual golf, digital entertainment suite and reading lounge.

Riverlight Quay is well located for transport links with the new Battersea PowerStation underground a 5 minuet walk away. Va

- 2 Double bedrooms
- 2 Bathrooms
- 9th Floor modern apartment
- 2 Balconies with River Thames views
- Light and spacious throughout
- Approx. 856 sq ft (79.6 sq m)
- 24-Hour concierge
- Residents' gym, pool and spa
- Walk to transport links
- No onward chain

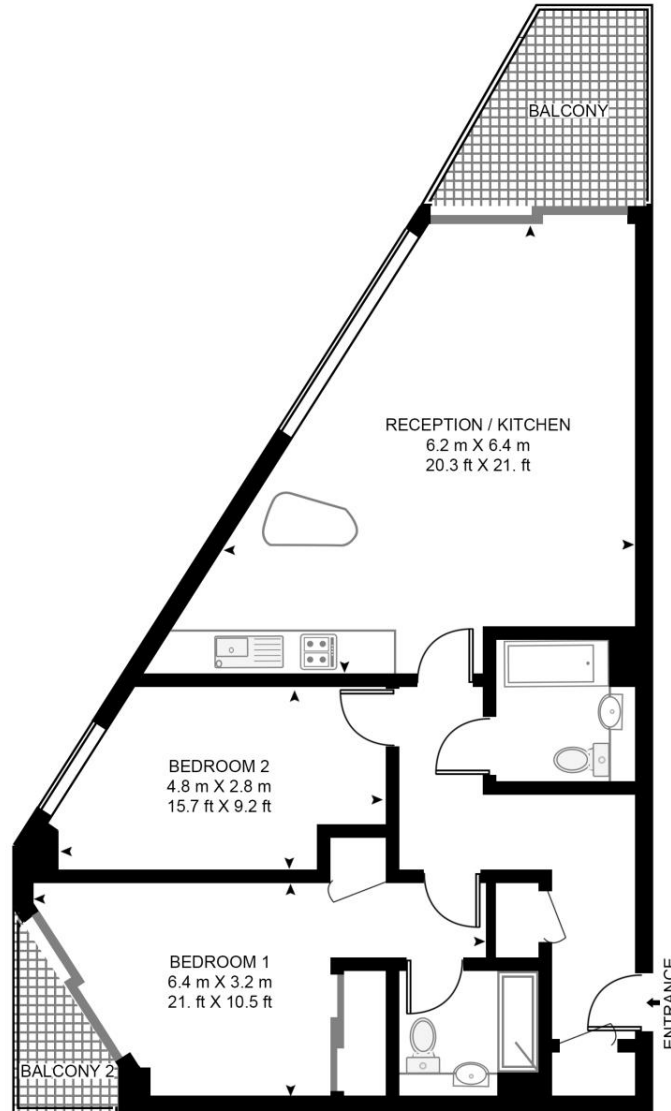


# Floorplan

sq ft | sq m

## RIVERLIGHT QUAY

APPROXIMATE GROSS INTERNAL FLOOR AREA 856 SQ.FT (79.6 SQ.M)



NINTH FLOOR



This floor plan has been defined by the RICS Code of Measurement. This floor plan and all others are for approximate representative purposes only and upon usage is agreed to as such by the client.  
WWW: [hdvirtualart.com](http://hdvirtualart.com) | TEL: 0203.974.1567 | EMAIL: [info@hdvirtualart.com](mailto:info@hdvirtualart.com)

Nine Elms  
4 Riverlight Quay,  
London SW11 8DG  
+4420 3147 1333  
[lettingsnineelms@eu.jll.com](mailto:lettingsnineelms@eu.jll.com)

*Urban living, your way.*

[jll.co.uk/residential](http://jll.co.uk/residential)

© 2019 Jones Lang LaSalle IP, Inc. All rights reserved. All information contained herein is from sources deemed reliable; however, no representation or warranty is made to the accuracy thereof.

