



COURTFIELD ROAD
KENSINGTON SW7

IMPRESSIVE UPPER-FLOOR VICTORIAN PROPERTY WITH 3 BEDROOMS, 3 BATHROOMS, PRIVATE ROOF TERRACE. PRIME COURTFIELD ROAD LOCATION NEAR KENSINGTON GARDENS.

This impressive upper-floor property in a Victorian-period building features three bedrooms, three bathrooms, and approximately 1,346 sq ft of split-level accommodation. With a private roof terrace and stunning views of communal gardens, it offers a captivating living experience. The property includes two double bedrooms with en-suite shower rooms, an additional bedroom, a separate bathroom, a south-facing open-plan kitchen and reception room with views of Harrington Gardens, and a spacious roof terrace. Conveniently located on Courtfield Road, just west of Gloucester Road in South Kensington, this property is within walking distance of Kensington Gardens and Hyde Park. Offered as a share of freehold, viewing is highly recommended to fully appreciate its charm.





- ❖ 1,345 Sqft
- ❖ Roof terrace
- ❖ Residential Permit Parking
- ❖ EPC: D
- ❖ Council Tax Band G
- ❖ Royal Borough and Kensington and Chelsea

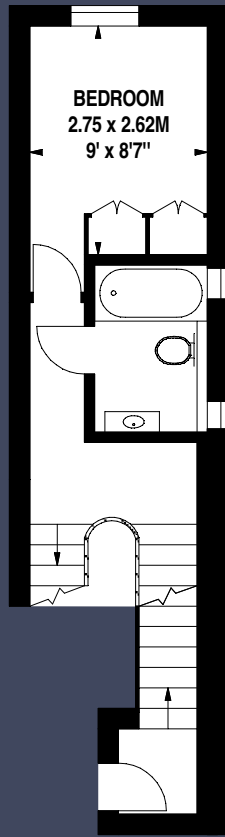
Share of Freehold
Price: £2,000,000
Service Charge: £6,346



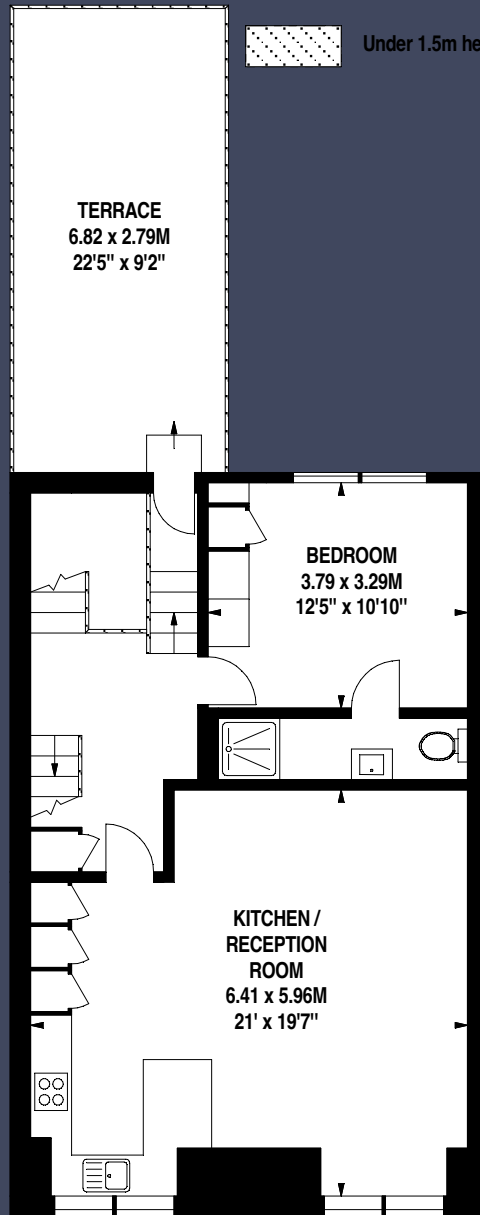
GROSS INTERNAL AREA

125 sq m | 1,346 sq ft

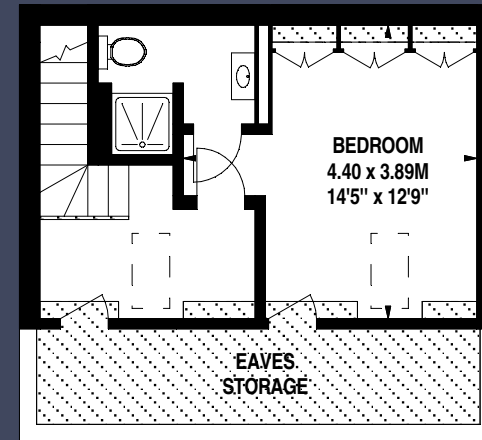
Including Eaves Storage of 9 sq m | 97 sq ft



Third Floor



Fourth Floor



Fifth Floor

