



## Morshead Road, London W9

Asking price £875,000 Leasehold









## Description

Nestled within a classic red brick period conversion, a charming 2 bedroom apartment offering a harmonious blend of elegance and contemporary living, just 0.3 miles from Maida Vale Station.

Situated on the first floor, the apartment welcomes you with an inviting entrance hall with storage room leading into a bright, south-facing reception area. A character-adding bay window bathes the room in natural light and provides access to the rear patio. The reception can be optionally separated from the chic, well-appointed kitchen, fitted with high-quality appliances. The main bedroom is a serene retreat, featuring ample integrated wardrobes and a luxurious en-suite bathroom. There is a second double bedroom and a stylish communal bathroom. Situated just 130 yards from Paddington Recreation Ground, this apartment offers easy access to lush green spaces for leisure and recreation. The nearby park features a climbing wall, children's playground, and outdoor gym. Within 1.3 miles lies the vast expanse of Regent's Park, home to attractions like London Zoo and the stunning Queen Mary's Gardens. The property's close proximity to London's prime central district and vibrant Notting Hill neighbourhood creates an enviable location, perfect for urban dwellers seeking a balance of tranquillity and city life.

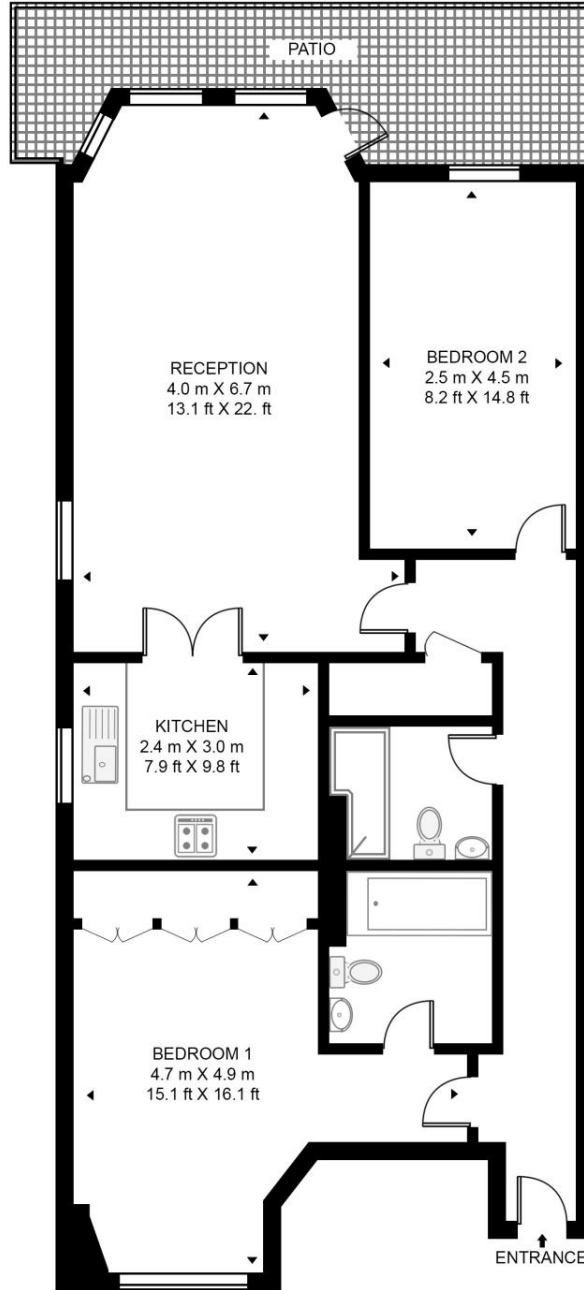
- 2 Double bedrooms
- 2 Bathrooms
- Rear patio
- Gated car parking
- 867 sq ft / 80.6 sq m
- Maida Vale station 530 yards
- Paddington Recreation Ground 130 yards
- EPC C

# Floorplan

867 sq ft | 81 sq m

## MORSHEAD ROAD

APPROXIMATE GROSS INTERNAL FLOOR AREA 867 SQ.FT (80.6 SQ.M)



GROUND FLOOR



This floor plan has been defined by the RICS Code of Measurement. This floor plan and all others are for approximate representative purposes only and upon usage is agreed to as such by the client.  
WWW: [hdvirtualart.com](http://hdvirtualart.com) | TEL: 0203.974.1567 | EMAIL: [info@hdvirtualart.com](mailto:info@hdvirtualart.com)

Kensington  
387 Kensington High Street,  
London W14 8QA  
+4420 7087 5696  
[lettingskensington@eu.jll.com](mailto:lettingskensington@eu.jll.com)

*Urban living, your way.*

[jll.co.uk/residential](http://jll.co.uk/residential)

© 2019 Jones Lang LaSalle IP, Inc. All rights reserved. All information contained herein is from sources deemed reliable; however, no representation or warranty is made to the accuracy thereof.

