



Lisgar Terrace, London W14

Asking price £750,000 Leasehold







Description

Nestled within a prestigious red brick gated development this elegant 2 bedroom apartment just a short stroll from the leafy expanses of Holland Park (0.7 miles) and the regal Kensington Gardens (1.4 miles), this first-floor residence offers prime location, style and convenience in one of London's most sought-after locations.

The interior of this apartment is complemented by stylish sash windows and welcomes you with a practical cloakroom in the hallway that leads to a contemporary open-plan kitchen and reception area. 2 spacious double bedrooms - each featuring integrated storage - provide restful retreats, while a sleek bathroom completes this well-appointed accommodation.

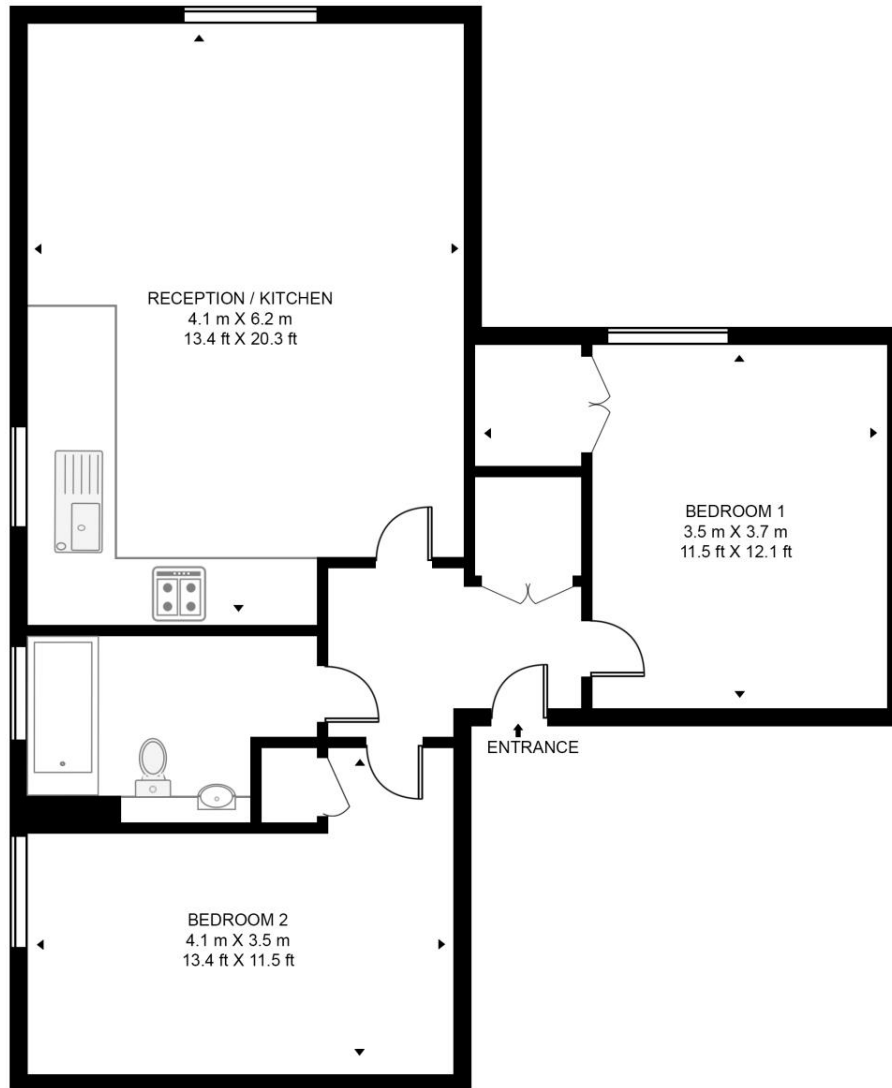
- Gated development
- 2 Double bedrooms
- 1 Bathroom
- Kensington Olympia and West Kensington stations are within 0.4 miles
- Approx 658 sq ft / 61.1 sq m
- EPC B

Floorplan

658 sq ft | 61 sq m

GARLAND COURT, LISGAR TERRACE

APPROXIMATE GROSS INTERNAL FLOOR AREA 658 SQ.FT (61.1 SQ.M)



FIRST FLOOR



This floor plan has been defined by the RICS Code of Measurement. This floor plan and all others are for approximate representative purposes only and upon usage is agreed to as such by the client.
WWW: hdvirtualart.com | TEL: 0203.974.1567 | EMAIL: info@hdvirtualart.com

Kensington
387 Kensington High Street,
London W14 8QA
+4420 7087 5696
lettingskensington@eu.jll.com

Urban living, your way.

jll.co.uk/residential

© 2019 Jones Lang LaSalle IP, Inc. All rights reserved. All information contained herein is from sources deemed reliable; however, no representation or warranty is made to the accuracy thereof.

