



Ennismore Gardens, London SW7

Price £1,153 per week - Furnished







Description

A well presented third and fourth floor flat (no lift) in this white stucco fronted building in this quiet location. The property is situated within a few minutes walk of both the open spaces of Hyde Park and the amenities of Knightsbridge.

The property benefits from a large open plan kitchen/reception room, two large bedrooms with a further smaller bedroom, two bathrooms (one en suite) and a separate WC. The property also benefits from a lovely balcony on the fourth floor.

Rent is payable on a monthly basis and you may be required to pay more than a month's rent in advance, depending on your circumstances. You will be required to pay a 1 week holding deposit following a successful offer. Utility bills, council tax, telephone line and broadband are not included in the rent. As well as paying the rent, you may also be required to make some additional permitted payments. If your tenancy does not qualify as an AST, additional fees may apply. Please visit jll.co.uk/fees for details of fees which may be payable when renting a property.

- Three bedrooms
- Fitted kitchen
- Reception/dining room
- Three bathrooms
- Balcony
- Third & fourth floor
- Approx. 1,311 sq ft (121.83 sq m)
- Council Tax: Band H
- EPC: D
- Deposit: £6,918

Floorplan

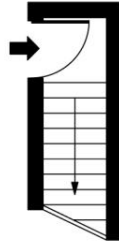
1,311 sq ft | 122 sq m

Ennismore Gardens, SW7

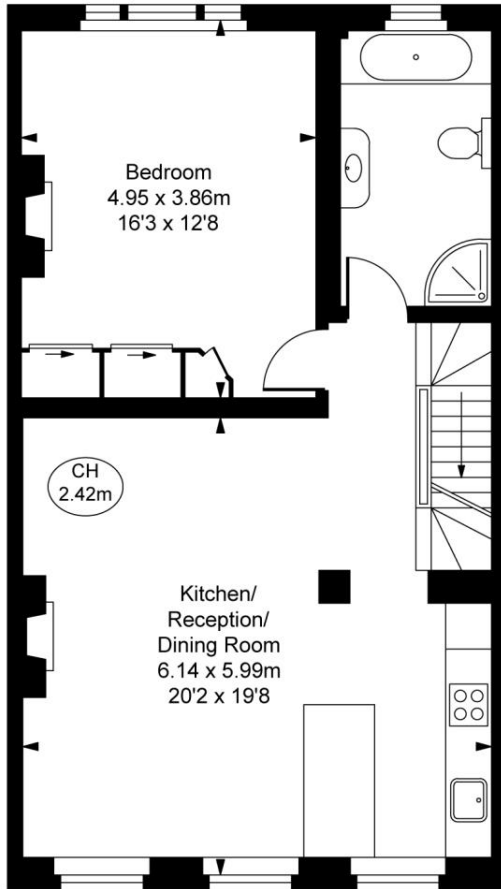
Approximate Gross Internal Area
121.83 sq m / 1,311 sq ft

(Including restricted height
under 1.5m [-----])

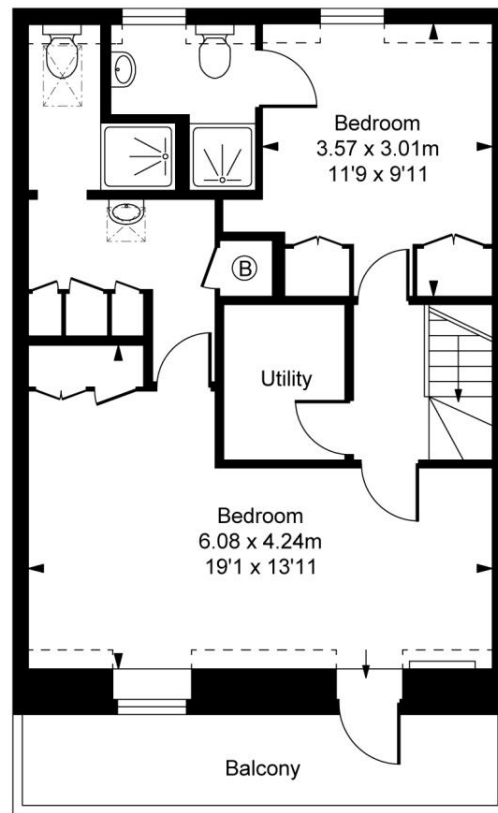
(CH = Ceiling Heights)



Second Floor Entrance
Approximate Gross Internal Area
2.25 sq m / 24 sq ft



Third Floor
Approximate Gross Internal Area
67.89 sq m / 731 sq ft



Fourth Floor
Approximate Gross Internal Area
51.69 sq m / 556 sq ft

This plan is not to scale. It is for guidance and not for valuation purposes.
All measurements and areas are approximate only, and have been prepared in accordance with the current edition of the RICS Code of Measuring Practice.
© Fulham Performance