

Queen's Gate

SOUTH KENSINGTON SW7



A very comfortable family flat with good entertaining space and a grand entrance hall.

It is located on the fourth floor of a well-known, handsome Edwardian mansion block with a porter and 24-hour security. The building is situated on the eastern side of Queen's Gate. South Kensington underground and all its retail and culinary outlets are a short walk away. The flat is in very good condition, quietly positioned in a smart building.





Accommodation

- 3 Bedrooms
- 2 Shower rooms (1 en suite)
- Entrance hall
- Kitchen / breakfast room
- Reception room
- Lift
- Porter
- Communal gas central heating and hot water

Terms

Guide Price: £2,800,000

Tenure: Leasehold; 949 years, expires 24th December 2973; plus share of freehold

Service Charge: £9,073.25 for 6 months to 24/03/2025

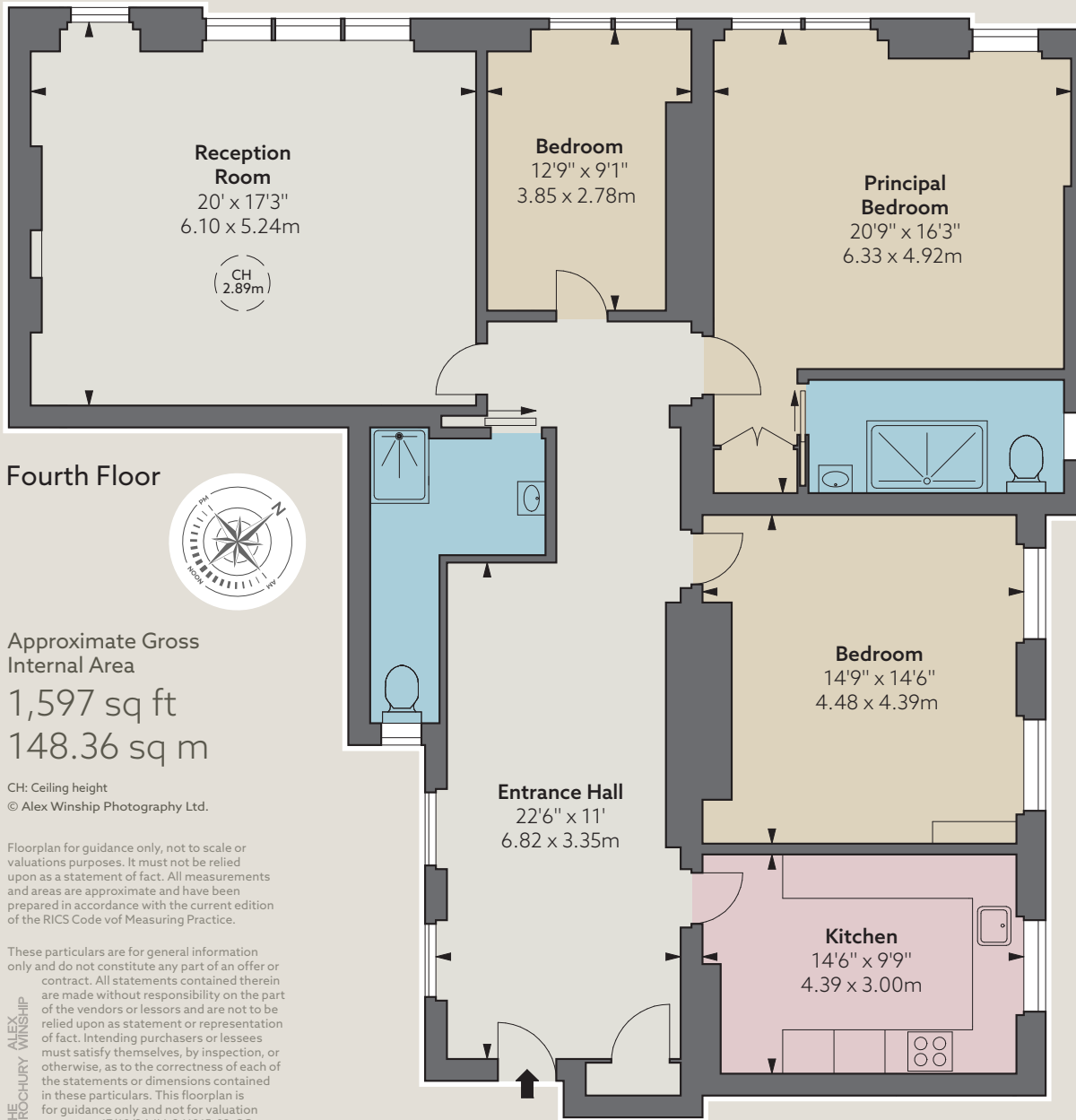
Ground Rent: Peppercorn

Local Authority: Royal Borough of Kensington and Chelsea

Council Tax: Band H

EPC: Rating C





JLL Knightsbridge
174 Brompton Road, London SW3 1HP
020 7306 1610

JLL Chelsea
2 Cale Street, London SW3 3QU
020 7399 5010

jll.co.uk/primecollection

