



City Road, London EC1V

Price £1,250 per week - Furnished







Description

Extending towards circa 1300 sq ft of well-proportioned living and entertaining space the apartment offers a stunning Westerly aspect from each bedroom allowing a plethora of natural light throughout.

Located on the 26th floor, the apartment offers a large open plan style reception room with dining space, access to a large balcony and views taking in The City of London and many of its landmark buildings.

A wonderful principal bedroom suite with the same views offers a walk-in dressing area with excellent wardrobe & storage space, access to a large en-suite bathroom, and has sliding doors opening to a good-sized balcony.

A further bedroom, with built-in wardrobes shares access to the 2nd balcony, whilst a family bathroom and good-sized storage cupboard are located off welcoming hallways that benefit from flowing natural light throughout.

Ideally located between Islington, Shoreditch and The City, 'Atlas' is a recently built 38 storey luxury development at the heart of a popular & vibrant area, that offers residents 24hr concierge, leisure & spa facilities, and cinema.

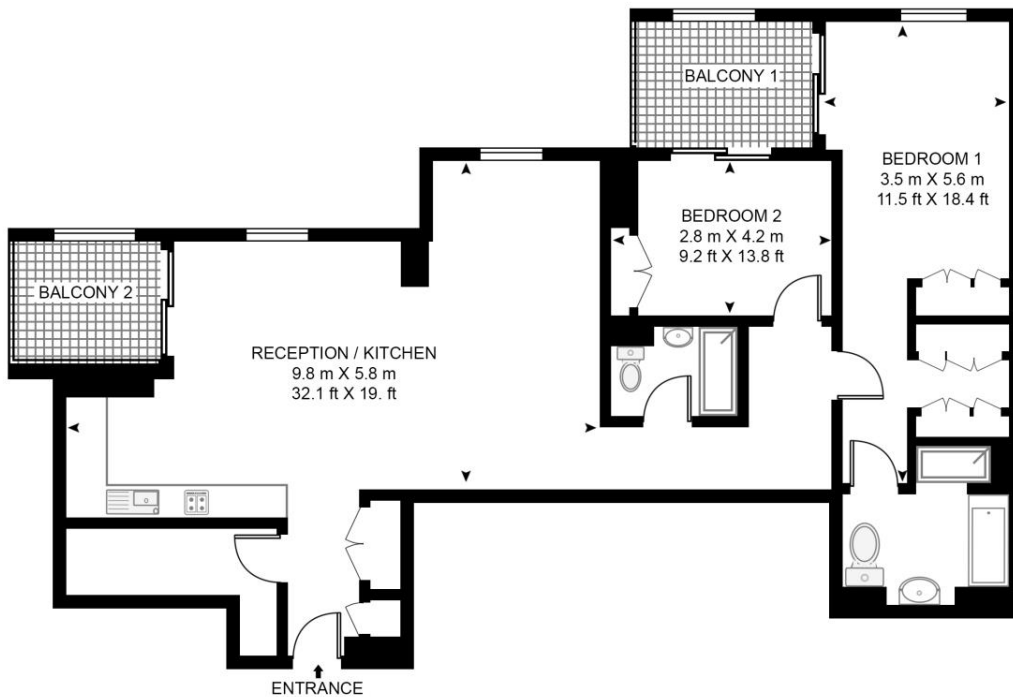
- Luxury newly built development
- 1284 sq ft of living space
- Panoramic Southwesterly views
- 26th floor
- Two balconies
- Large reception room
- Leisure & spa facilities inc Cinema
- Lift
- 24 Hr concierge
- Ideally located for The City

Floorplan

1,284 sq ft | 119 sq m

ATLAS BUILDING, 145 CITY ROAD

APPROXIMATE GROSS INTERNAL FLOOR AREA 1284 SQ.FT (119.3 SQ.M)



TWENTY SIXTH FLOOR



This floor plan has been defined by the RICS Code of Measurement. This floor plan and all others are for approximate representative purposes only and upon usage is agreed to as such by the client.

WWW: hdvirtualart.com | TEL: 0203.974.1567 | EMAIL: info@hdvirtualart.com

City
25 Walbrook The Walbrook
Building,
London EC4N 8AF
+4420 7337 4000

Urban living, your way.

jll.co.uk/residential

© 2019 Jones Lang LaSalle IP, Inc. All rights reserved. All information contained herein is from sources deemed reliable; however, no representation or warranty is made to the accuracy thereof.

