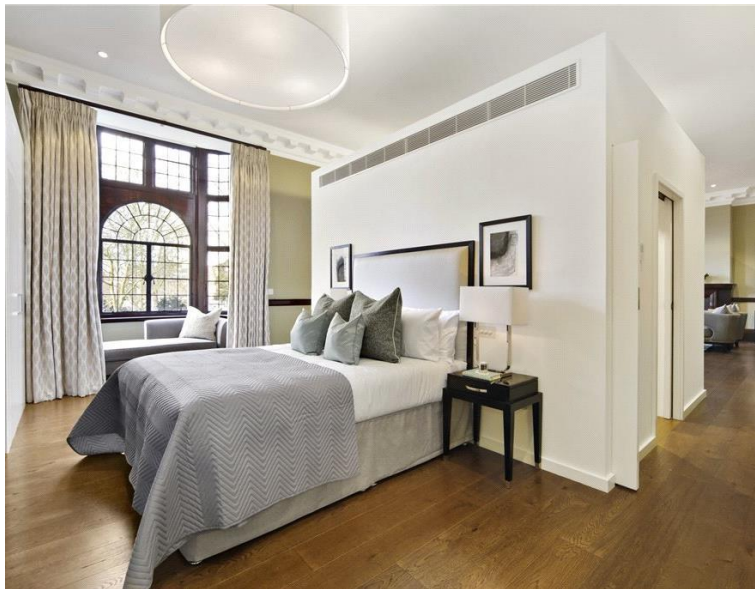




Kings Road, London SW3

Price £1,300 per week - Furnished







Description

A spectacular first floor flat (no lift) in this Grade II listed building in the heart of Chelsea. The property consists of one double bedroom with built in wardrobes and en suite bathroom with separate shower, guest cloakroom, a huge reception room and a fully fitted kitchen. This interior designed flat further benefits from wooden flooring in the reception room, comfort cooling and underfloor heating and stylish and contemporary furnishings alongside an intruder alarm.

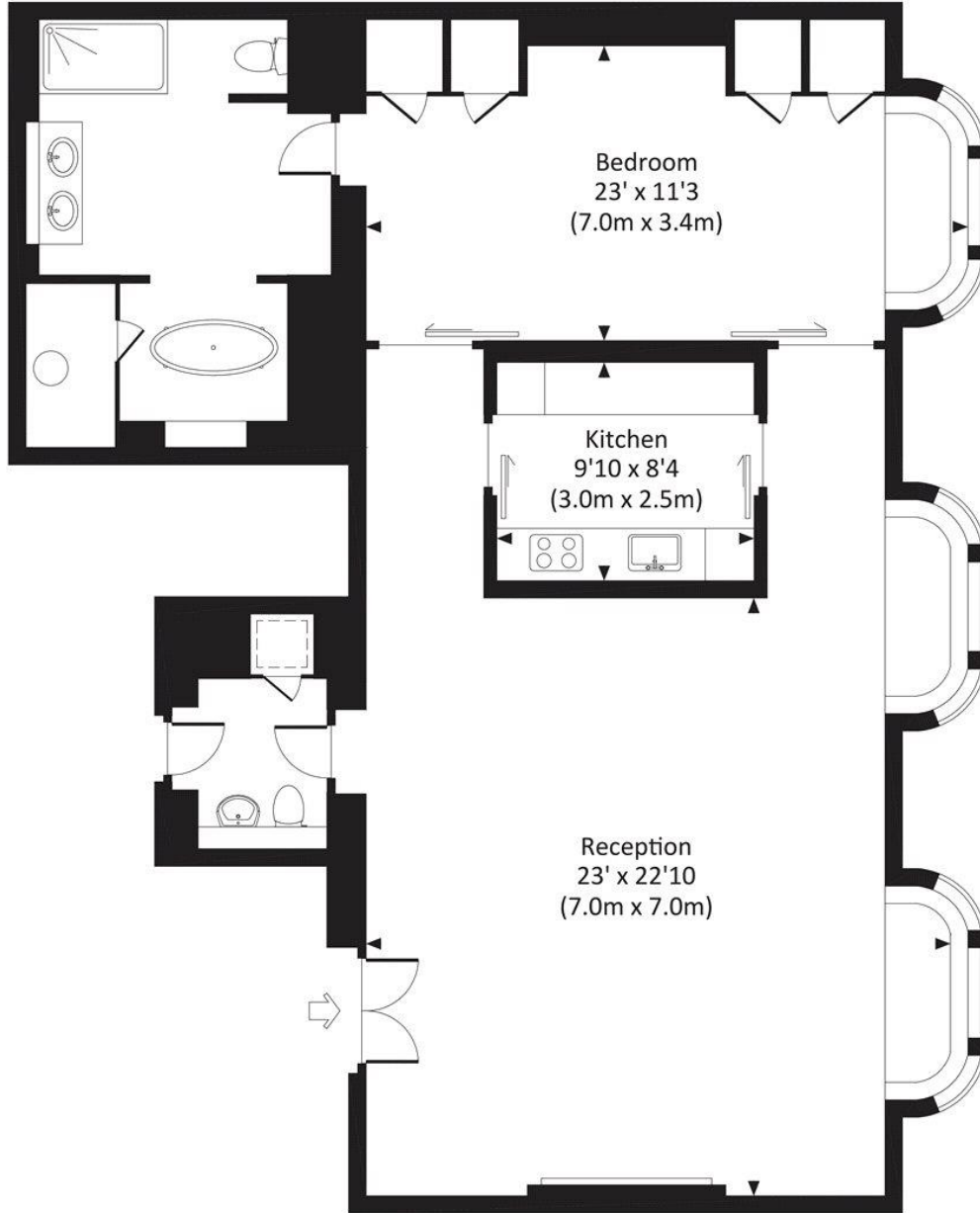
Rent is payable on a monthly basis and you may be required to pay more than a month's rent in advance, depending on your circumstances. You will be required to pay a 1 week holding deposit following a successful offer. Utility bills, council tax, telephone line and broadband are not included in the rent. As well as paying the rent, you may also be required to make some additional permitted payments. If your tenancy does not qualify as an AST, additional fees may apply. Please visit jll.co.uk/fees for details of fees which may be payable when renting a property.

- 1 Double bedroom
- 1 Bathroom (en suite)
- Guest cloakroom
- Reception room
- Fully fitted kitchen
- First floor
- Air conditioning
- Underfloor heating
- Intruder alarm
- Approx. 1,223 sq ft (113 sq m)

Floorplan

1,223 sq ft | 114 sq m

Approx. gross internal area
1223 Sq.Ft. / 113.6 Sq.M.
1234 Sq.Ft. / 114.6 Sq.M. Inc. Restricted Height Area



FIRST FLOOR



All measurements have been made in accordance with RICS Code of Measuring Practice which are approximate only and only for illustrative purposes. For the avoidance of doubt, Dowling Jones Design shall not be liable for any reliance on these measurements. © 2015 www.dowlingjones.com 020 7610 9933

Chelsea
2 Cale Street,
London SW3 3QU
+4420 7399 5010
saleschelsea@jll.com

Urban living, your way.

jll.co.uk/residential

© 2019 Jones Lang LaSalle IP, Inc. All rights reserved. All information contained herein is from sources deemed reliable; however, no representation or warranty is made to the accuracy thereof.

