



Churchyard Row, London SE11

Price £3,175 per month - Furnished







Description

UNCLE is in one of the tallest high-rise buildings in London, reaching 45 storeys high it also happens to be by far the coolest building in London. Residents have access to a range of amenities, including a 24 hour on site gym and a stylish 45th floor sky lounge with panoramic views of London and four sleek areas: a lounge space to relax and show off the views of the Shard and City, kitchen area for entertaining, co-working space to plot a new venture or work from home and an incredible bar area to start the weekend in style!

The apartment has an open plan design and is finished to a high specification, benefitting from a stylish kitchen with integrated Siemens appliances and breakfast bar, spacious living area leading on to a large private balcony, contemporary bathroom, master bedroom with en-suite, both bedrooms are doubles and designed with built in wardrobes and wood floor throughout.

UNCLE believes you shouldn't have to own a home to be treated like a home owner, with guaranteed routine repairs in 48 hours max and 2 weeks to rip up your contract, no strings attached.

Rent is payable on a monthly basis and you may be required to

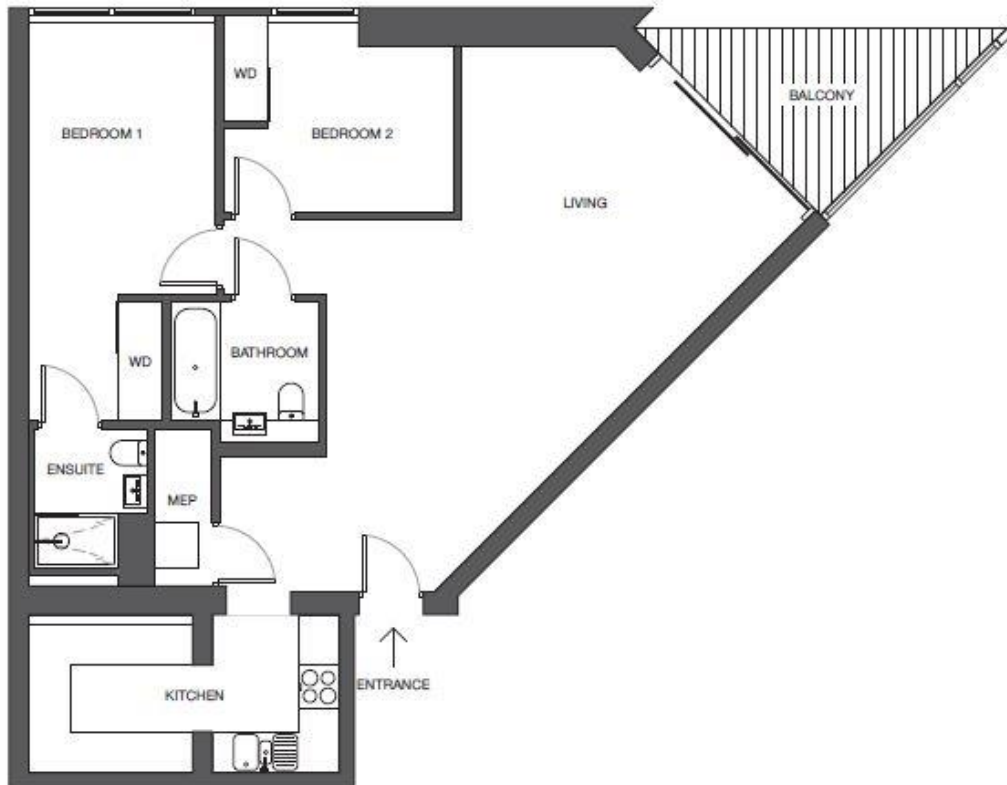
- 24/7 on-site UNCLE team
- 45th floor sky lounge with exceptional views
- Residents lounge, work space, bar & kitchen areas
- Residents gym
- High Speed Fibre Broadband up to 1GB in communal areas
- Secure bike storage available
- 0.2 Elephant & Castle station
- Parking available at additional cost
- EPC: B
- Council tax: Band E

Floorplan

871 sq ft | 81 sq m

UNCLE ELEPHANT & CASTLE

LARGE 2 BED



AVERAGE SIZE: 81m²

MEP - Meter cupboard
WD - Wardrobe

*Floorplan is for illustrative purposes only and is not to scale.
Dimensions of actual unit may vary slightly.

UNCLE

City
25 Walbrook The Walbrook
Building,
London EC4N 8AF
+4420 7337 4000

Urban living, your way.

jll.co.uk/residential

© 2019 Jones Lang LaSalle IP, Inc. All rights reserved. All information contained herein is from sources deemed reliable; however, no representation or warranty is made to the accuracy thereof.

