

## High Street, London E15

Asking price £570,000 Leasehold







## Description

This two bedroom, two bathroom apartment is situated on the eighth floor in one of Stratford's most popular riverside developments, River Heights E15. This modern and secure development boasts a residents-only gymnasium, concierge and roof terrace and is walking distance to Pudding Mill Lane DLR. This particular apartments also benefits from a secure underground parking space.

The property comprises a south-west facing dual aspect living room with access to a large covered balcony with fantastic views of the London Skyline, modern fitted kitchen with integrated appliances, large and modern family bathroom, master bedroom with balcony access, built in wardrobe & en suite bathroom and second double bedroom with balcony access. The property further benefits comfort cooling, superb far reaching views, 24hr concierge, residents roof terrace, residential gym and a private underground parking space.

River heights is just a short walk from the amenities Westfield has to offer and also Stratford underground station for links across London and benefits from a concierge, residents' gym, private roof terrace and secure allocated parking. Years remaining on lease: 991, SC: TBC, GR: £350pa, Council tax band: D

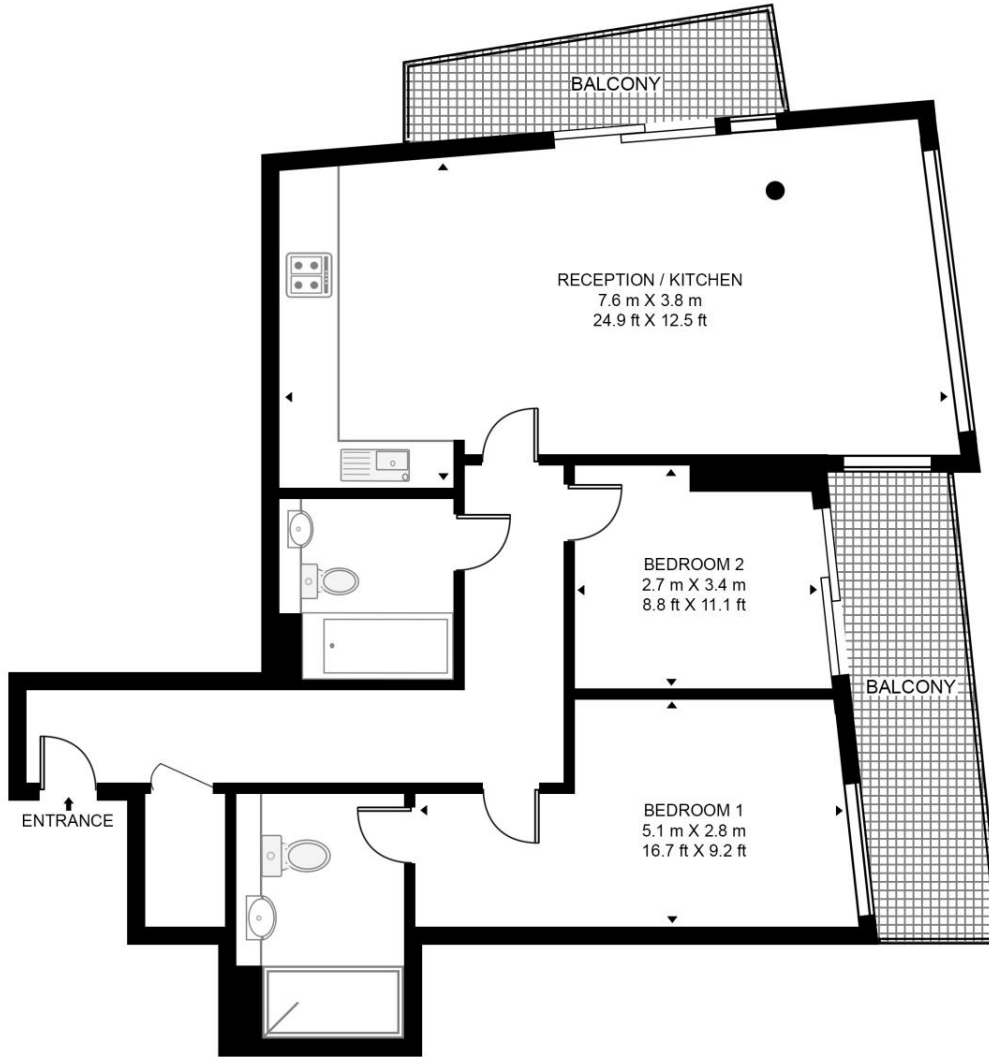
- Two bedrooms
- Two bathrooms (one en-suite)
- 8th Floor
- Approx 752 sq.ft (69.9 sq. m)
- Concierge service
- Residential Gymnasium
- Outdoor space
- Views towards the Olympic Park
- Short walk to Westfield's Stratford City
- Close to Stratford Underground Station

# Floorplan

752 sq ft | 70 sq m

## RIVER HEIGHTS, HIGH STREET

APPROXIMATE GROSS INTERNAL FLOOR AREA 752 SQ.FT (69.9 SQ.M)



EIGHTH FLOOR



This floor plan has been defined by the RICS Code of Measurement. This floor plan and all others are for approximate representative purposes only and upon usage is agreed to as such by the client.

WWW: [hdvirtualart.com](http://hdvirtualart.com) | TEL: 0203.974.1567 | EMAIL: [info@hdvirtualart.com](mailto:info@hdvirtualart.com)

Stratford  
5 Station Street,  
London E15 1DA  
+4420 3147 1500  
[Lettingsstratford@eu.jll.com](mailto:Lettingsstratford@eu.jll.com)

*Urban living, your way.*

[jll.co.uk/residential](http://jll.co.uk/residential)

© 2019 Jones Lang LaSalle IP, Inc. All rights reserved. All information contained herein is from sources deemed reliable; however, no representation or warranty is made to the accuracy thereof.

