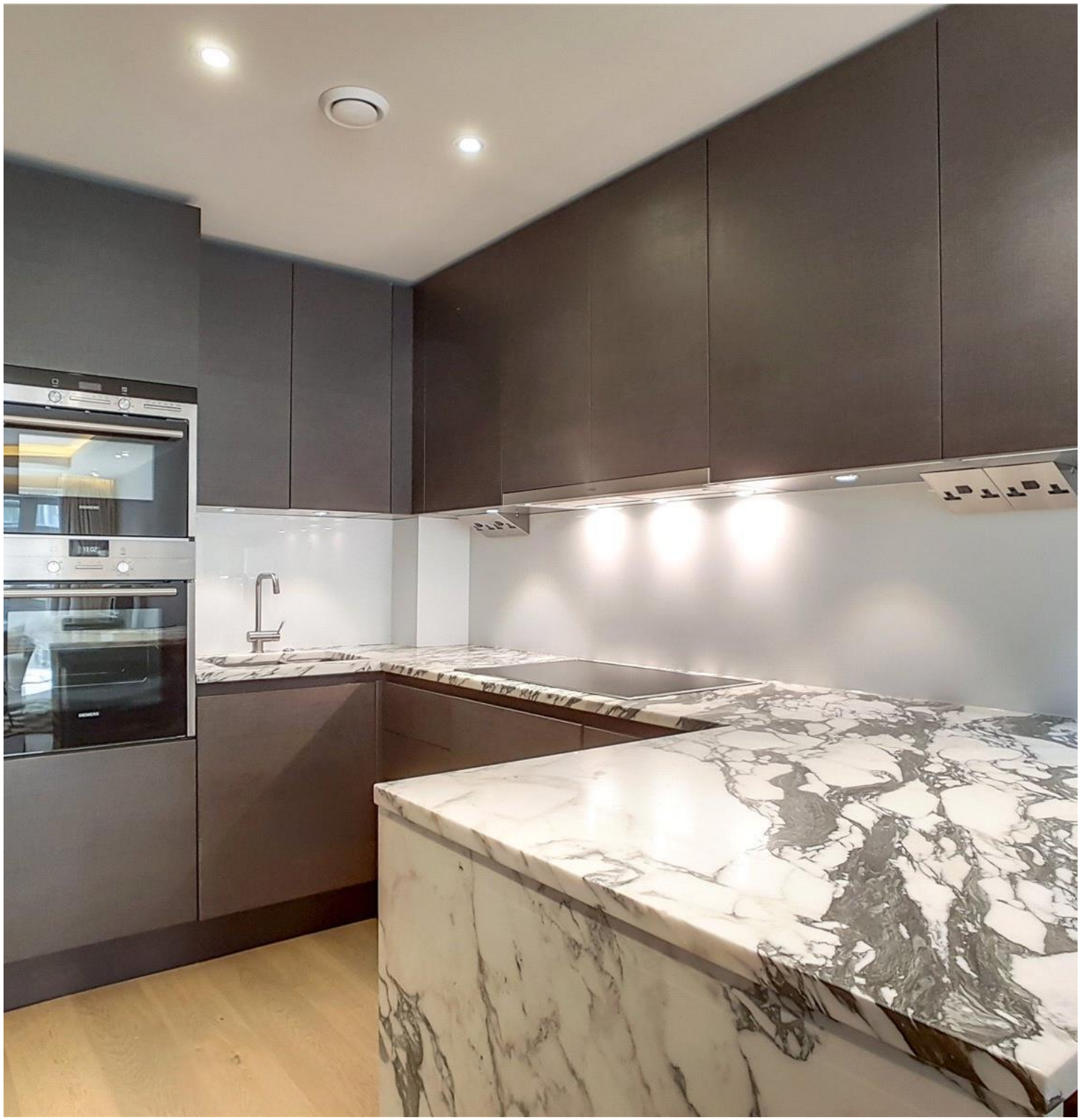


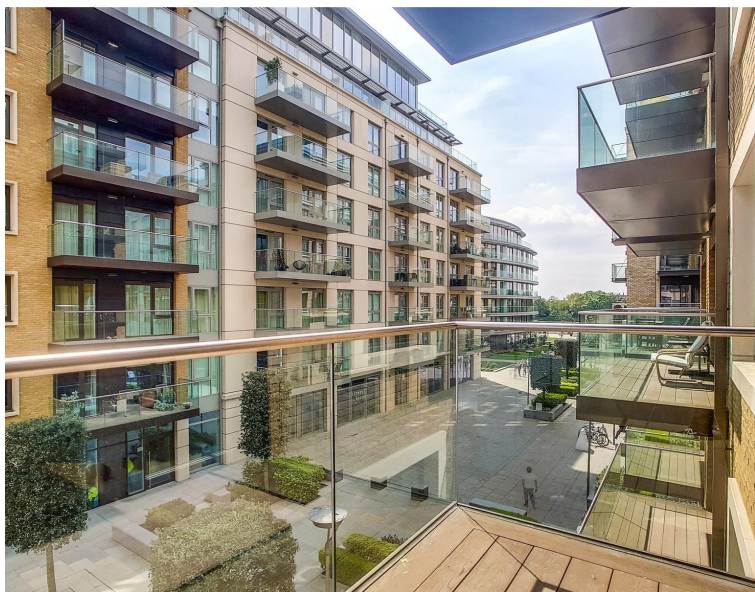


Parr'S Way, Hammersmith W6

Price £2,860 per month - Furnished







Description

A beautiful modern one bedroom apartment to let with private balcony and a concierge. This property is located in a modern high quality riverside development which benefits from fantastic residents facilities such as 24 hour concierge, gym, swimming pool, cinema room and virtual golf room. The property comprises a spacious bedroom with fitted wardrobes, family sized bathroom, open plan kitchen and living room leading to the private balcony, and is offered on a furnished basis.

Rent is payable on a monthly basis and you may be required to pay more than a month's rent in advance, depending on your circumstances. You will be required to pay a 1 week holding deposit following a successful offer. Utility bills, council tax, telephone line and broadband are not included in the rent. As well as paying the rent, you may also be required to make some additional permitted payments. If your tenancy does not qualify as an AST, additional fees may apply. Please visit jll.co.uk/fees for details of fees which may be payable when renting a property.

- 1 Bedroom
- 1 Bathroom
- 24 Hour concierge
- Gym, swimming pool, cinema
- Interior designed
- Approx 556 sq ft (52 sq m)
- Furnished
- EPC: B
- Council tax: Band E
- Deposit amount: £3,300 (estimate) and an initial holding deposit of 1 week's rent is payable to res

Floorplan

sq ft | sq m

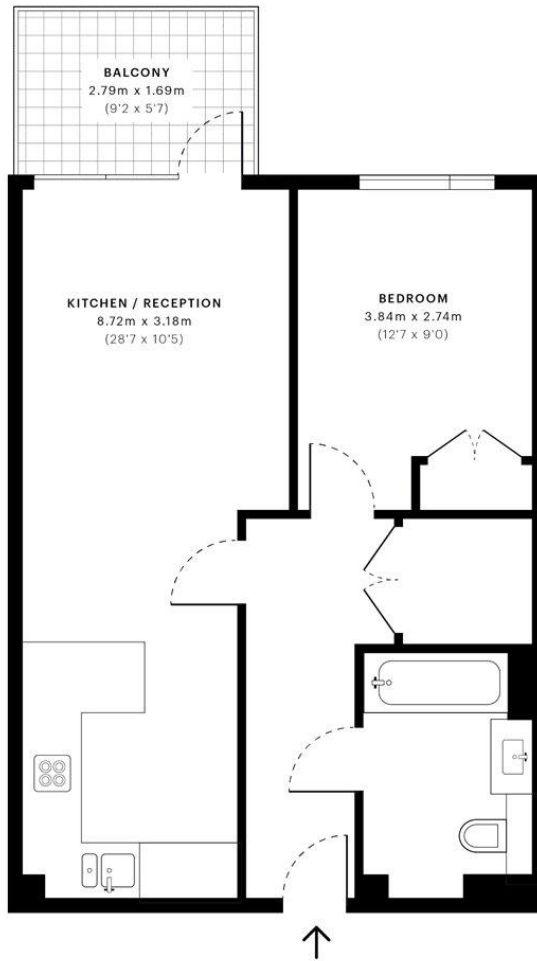


Brunswick House, W6

CAPTURE DATE
30/04/2019

LASER SCAN POINTS
19,063,230

GROSS INTERNAL AREA
50.7 Sqm / 545.5 Sqft



— Second Floor

GROSS INTERNAL AREA
The footprint of the property
50.7 Sqm / 545.5 Sqft

NET AREA (INTERNAL)
Excludes walls and external features
48.9 Sqm / 526.9 Sqft

EXTERNAL STRUCTURAL FEATURES
Balconies, terraces, verandas etc.
4.8 Sqm / 51.2 Sqft

RESTRICTED HEAD HEIGHT
Limited use area under 1.5m
0.0 Sqm / 0.0 Sqft



Spec floor plans are produced in accordance with the Royal Institution of Chartered Surveyors' Property Measurement Standards. Plots and gardens are illustrative only and are excluded from all area calculations. Due to rounding, numbers may not add up precisely.

IPMS 3B RESIDENTIAL
55.9 Sqm / 602.1 Sqft

IPMS 3C RESIDENTIAL
54.2 Sqm / 583.4 Sqft

SPEC ID
5cb86a416f880a0a1efbd7ec

Kensington
387 Kensington High Street,
London W14 8QA
+4420 7087 5696
lettingskensington@eu.jll.com

Urban living, your way.

jll.co.uk/residential

© 2019 Jones Lang LaSalle IP, Inc. All rights reserved. All information contained herein is from sources deemed reliable; however, no representation or warranty is made to the accuracy thereof.

