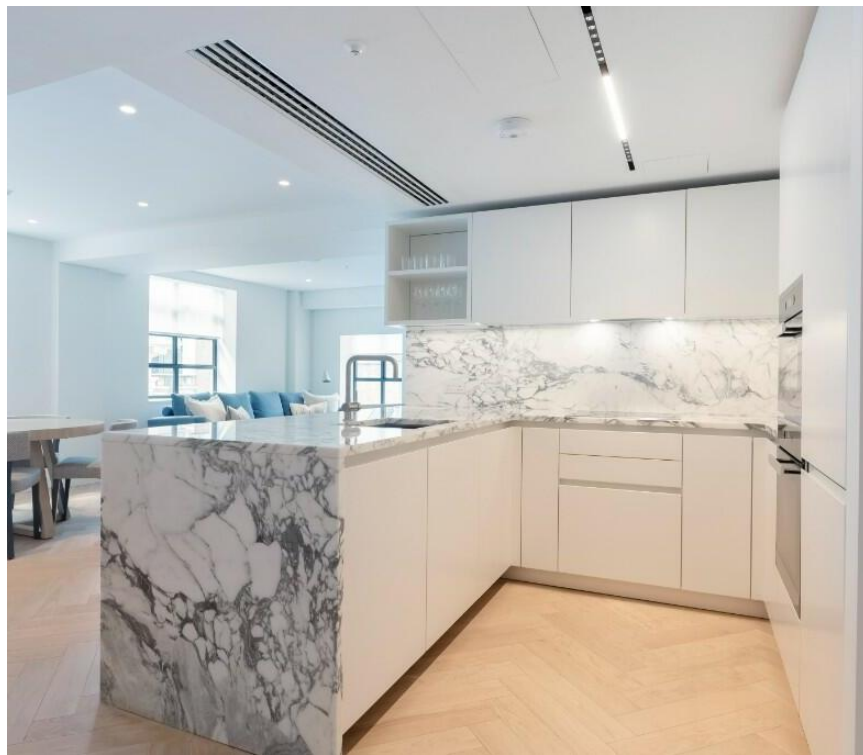


Sherwood Street, London W1F

Price £1,295 per week - Furnished





Description

A luxury apartment by The Crown Estate in London's most historic neighbourhood just off Regent's Street. The property comprises two double bedrooms, one en suite bathroom, one family bathroom, reception room and a fully fitted, open plan kitchen. Further benefits include wooden flooring and 24 hour security service.

Rent is payable on a monthly basis and you may be required to pay more than a month's rent in advance, depending on your circumstances. You will be required to pay a 1 week holding deposit following a successful offer. Utility bills, council tax, telephone line and broadband are not included in the rent. As well as paying the rent, you may also be required to make some additional permitted payments. If your tenancy does not qualify as an AST, additional fees may apply. Please visit jll.co.uk/fees for details of fees which may be payable when renting a property.

- Stunning Apartment
- Open-Plan Kitchen Reception
- 24 Hour concierge
- Lift Access
- Approx. 876sqft / 82 sqm
- Wooden Flooring
- Furnished
- EPC: B

- Council tax: Band G

- Deposit amount: ££8,250 (estimate) and an initial holding deposit of 1 week's rent is payable to re



Floorplan

876 sq ft | 81 sq m

[Home](#) [Overview](#) [Residences](#) [Location](#) [Lifestyle](#) [Find an apartment](#) [Contact](#)



12 Sherwood St Apartments

508 / FLOOR 5 / LATERAL / 2 BED / ST JAMES'S STYLE



TOTAL AREA
81.4 SQM
876 SQFT



FLOOR 5

Mayfair and Marylebone

St George Street,
London W1S 2FQ
+44 207 399 5550
mayfair@jll.com

Urban living, your way.

jll.co.uk/residential

© 2019 Jones Lang LaSalle IP, Inc. All rights reserved. All information contained herein is from sources deemed reliable; however, no representation or warranty is made to the accuracy thereof.

