

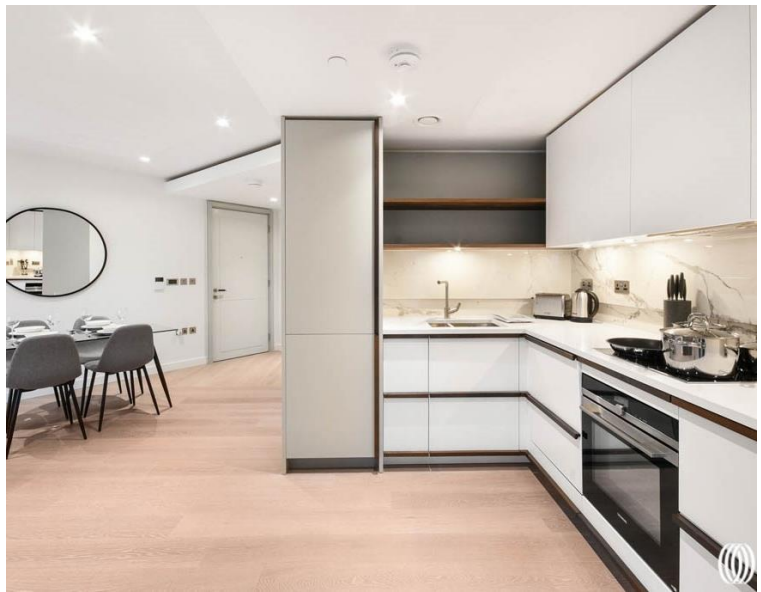
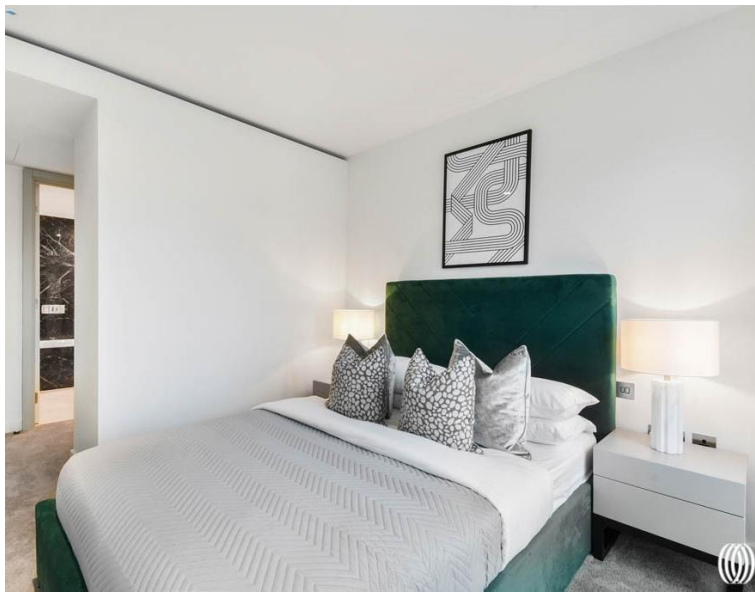
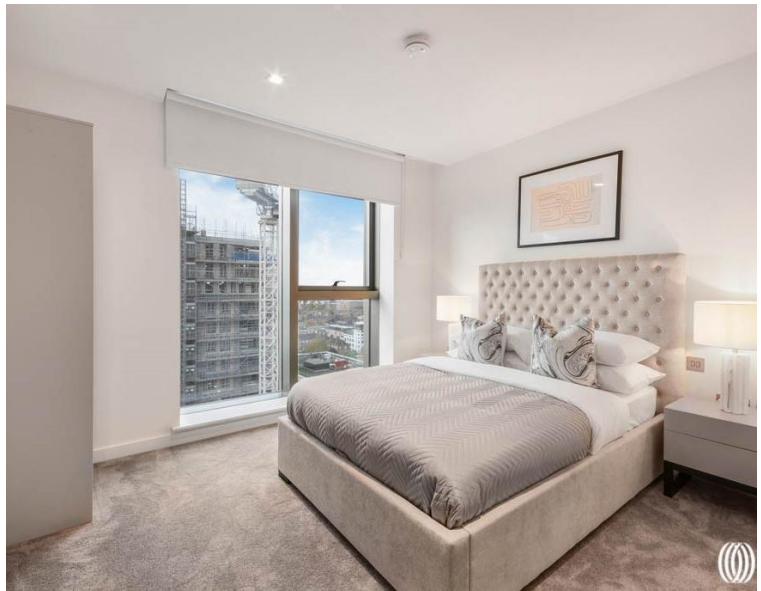


## Newcastle Place, London W2

Price £5,000 per month - Furnished







## Description

A luxury two-bedroom apartment to let in Westmark Tower, part of the new West End Gate development in Paddington. Arranged over the 16th floor the property comprises two double bedrooms (one en-suite), second family sized bathroom, open plan kitchen and living room leading to the private balcony. Other benefits include 24-hour concierge, lift, gym, swimming pool, cinema, gym, meeting room, residents lounge and private hire dining area. West End Gate by St Edward is built to the highest quality. Paddington mainline and underground stations are just a short walk away. This property is offered on a furnished basis and is available for immediate occupancy.

Rent is payable on a monthly basis and you may be required to pay more than a month's rent in advance, depending on your circumstances. You will be required to pay a 1 week holding deposit following a successful offer. Utility bills, council tax, telephone line and broadband are not included in the rent. As well as paying the rent, you may also be required to make some additional permitted payments. If your tenancy does not qualify as an AST, additional fees may apply. Please visit [jll.co.uk/fees](http://jll.co.uk/fees) for details of fees which may be payable when renting a property.

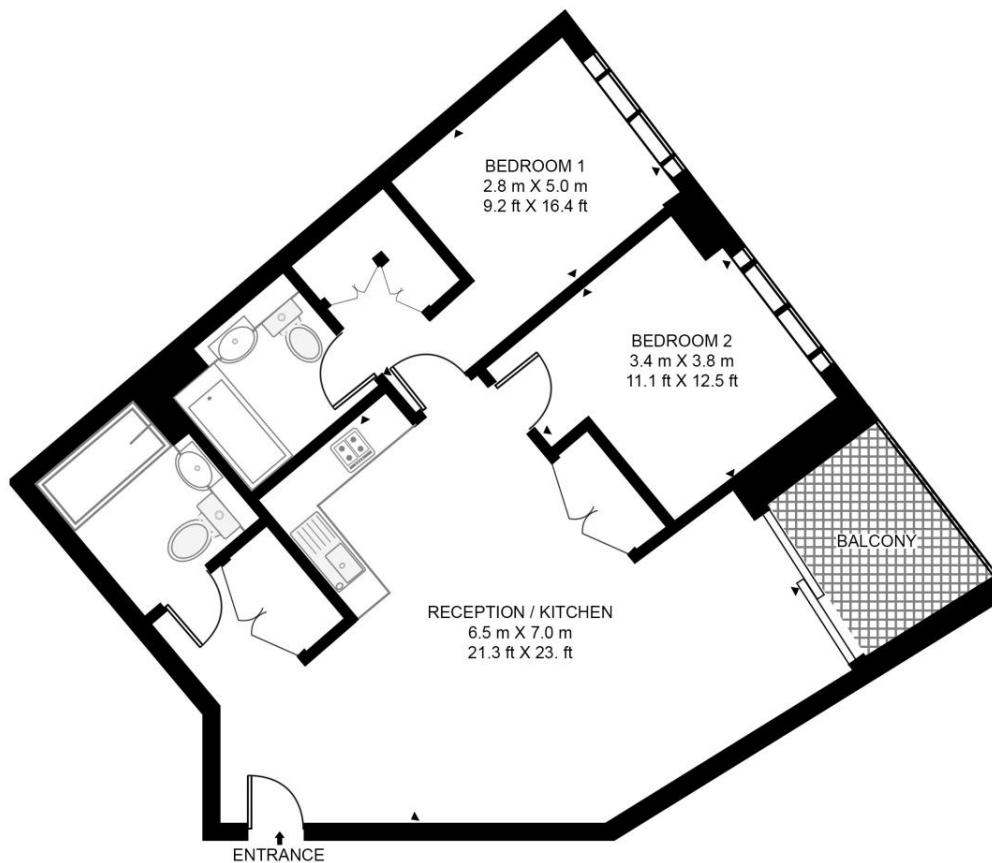
- 2 Bedrooms
- 2 Bathrooms
- Private balcony
- 24 Hour concierge
- Resident only leisure facilities
- Approx 859 sq ft (80 sq m)
- Furnished
- EPC: B
- Council tax: Band F
- Deposit amount: £6,923.07 (estimate) and an initial holding deposit of 1 week's rent is payable to

# Floorplan

859 sq ft | 80 sq m

## WESTMARK TOWER

APPROXIMATE GROSS INTERNAL FLOOR AREA 859 SQ.FT (79.8 SQ.M)



## SIXTEENTH FLOOR

**HDVA**

This floor plan has been defined by the RICS Code of Measurement. This floor plan and all others are for approximate representative purposes only and upon usage is agreed to as such by the client.

WWW: [hdvirtualart.com](http://hdvirtualart.com) | TEL: 0203.974.1567 | EMAIL: [info@hdvirtualart.com](mailto:info@hdvirtualart.com)

Kensington  
387 Kensington High Street,  
London W14 8QA  
+4420 7087 5696  
[lettingskensington@eu.jll.com](mailto:lettingskensington@eu.jll.com)

*Urban living, your way.*

[jll.co.uk/residential](http://jll.co.uk/residential)

© 2019 Jones Lang LaSalle IP, Inc. All rights reserved. All information contained herein is from sources deemed reliable; however, no representation or warranty is made to the accuracy thereof.

