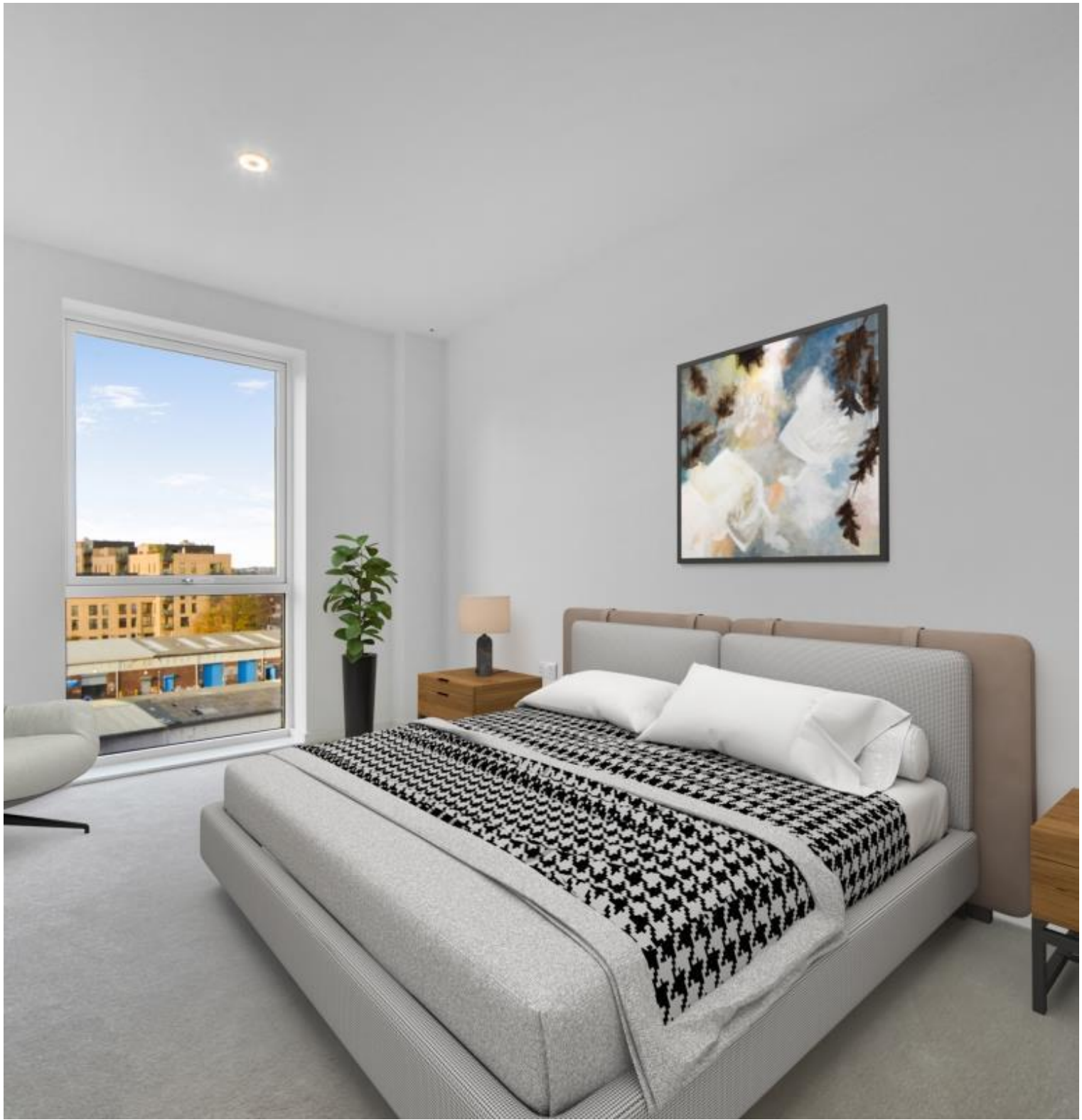


Penny Brookes Street, London E15

Guide price £750,000 Leasehold







Description

BRAND NEW

JLL are pleased to advertise this brand new three double bedroom, two bathroom penthouse apartment located in the final phase of Stratford's newest completed developments, New Stratford Works E15.

With close to 1000 sq. ft of internal living space, this top floor apartment offers high end and ultra modern finishes throughout, comprising large entrance hall with four large storage cupboards, over 28ft living space leading to large private balcony overlooking the developments communal gardens, fully fitted and integrated kitchen, fully tiled family bathroom and three double bedrooms with en-suite to master. This property also benefits being part of a secure development where you are well located for Queen Elizabeth Olympic Park, home to London Aquatics Centre, East Village for nice bars and restaurants together with Hackney Wick which is a short walk away.

Chadwick Building is within walking distance of Stratford Station, providing excellent transport links into The City, Canary Wharf, and West End. Westfield Stratford City shopping centre is also within less than 0.5 mile walk.

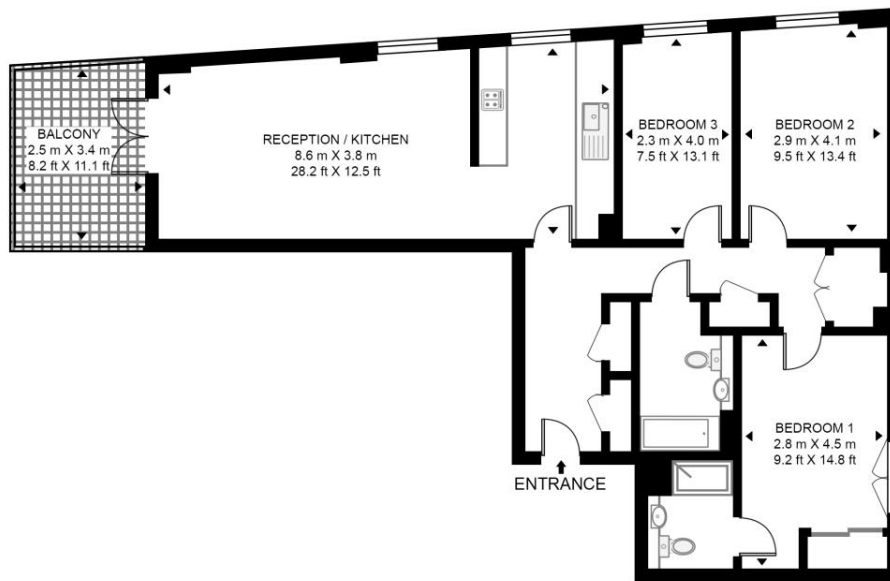
- Brand new apartment
- 3 bedrooms
- 2 bathrooms (one en-suite)
- Penthouse apartment
- 5th Floor
- Private balcony
- Recently completed development
- Approx. 969 sq. ft (90 sq. m)
- EPC Rating B

Floorplan

969 sq ft | 90 sq m

CHADWICK BUILDING

APPROXIMATE GROSS INTERNAL FLOOR AREA 969 SQ.FT (90 SQ.M)



FIFTH FLOOR



This floor plan has been defined by the RICS Code of Measurement. This floor plan and all others are for approximate representative purposes only and upon usage is agreed to as such by the client.

WWW: hdvirtualart.com | TEL: 0203.974.1567 | EMAIL: info@hdvirtualart.com

Stratford
5 Station Street,
London E15 1DA
+4420 3147 1500
Lettingsstratford@eu.jll.com

Urban living, your way.

jll.co.uk/residential

© 2019 Jones Lang LaSalle IP, Inc. All rights reserved. All information contained herein is from sources deemed reliable; however, no representation or warranty is made to the accuracy thereof.

