



## Leyton Road, London E15

Asking price £450,000 Leasehold











## Description

New to the market - Proud to offer this modern, one bedroom apartment with balcony in one of Stratford's most sought-after locations, New Gardens Quarter, E15.

This property offers a high-specification kitchen featuring sleek, handle-less fitted units, engineered stone worktops, and elegant glass splashbacks and fully integrated SMEG appliances. The open-plan reception offers ample space for dining, making it perfect for both entertaining and relaxed evenings at home. The bathroom is equipped with bespoke cabinetry and ceramic tiling. The double bedroom includes fitted wardrobes, and underfloor heating is provided throughout the apartment.

Residents of New Gardens Quarter enjoy exclusive access to a host of luxurious amenities, including a beautifully landscaped 2-acre garden square and private green spaces. The building provides a 24-hour concierge and parcel service for your convenience, a residents-only gym and secure bicycle storage.

Nestled next to Queen Elizabeth Park, this prime location also offers easy access to Westfield Stratford City. A short stroll leads you to Stratford Underground Station, for seamless connectivity to the rest of London.

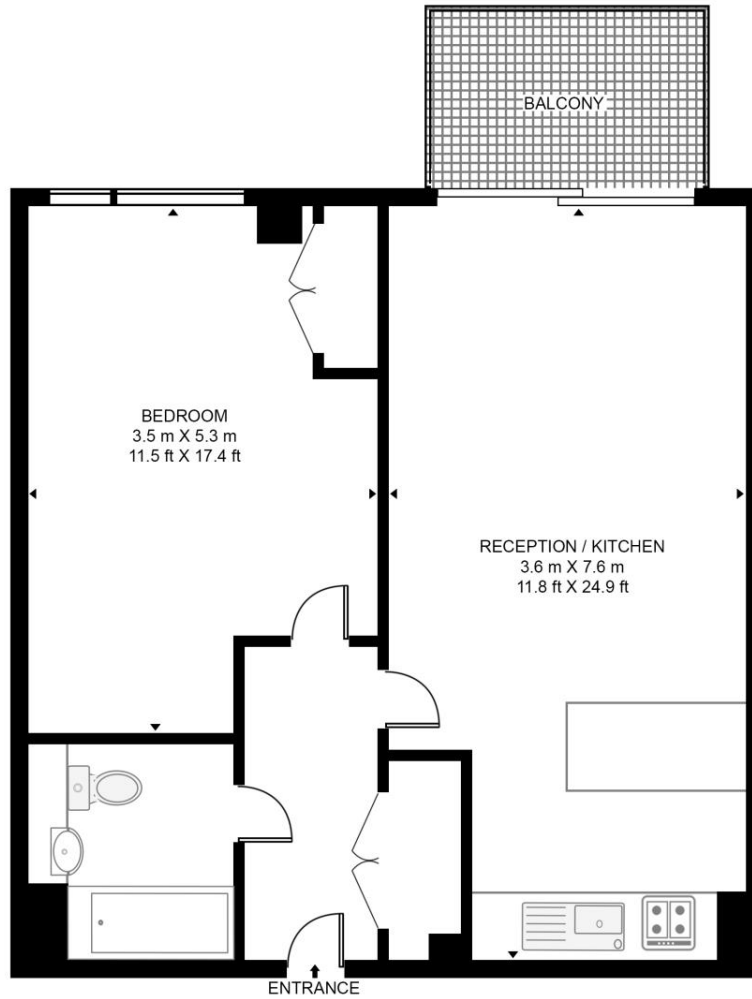
- One bedroom apartment
- 4th Floor
- Balcony
- Air conditioning
- Underfloor heating
- 24hr concierge
- Residents only gym
- Popular, modern & secure development
- Approx. 581sq. ft (54 sq.m)
- EPC Rating B

# Floorplan

581 sq ft | 54 sq m

## CARRIAGE HOUSE, 42 LEYTON ROAD

APPROXIMATE GROSS INTERNAL FLOOR AREA 581 SQ.FT (54 SQ.M)



FOURTH FLOOR



This floor plan has been defined by the RICS Code of Measurement. This floor plan and all others are for approximate representative purposes only and upon usage is agreed to as such by the client.  
WWW: [hdvirtualart.com](http://hdvirtualart.com) | TEL: 0203.974.1567 | EMAIL: [info@hdvirtualart.com](mailto:info@hdvirtualart.com)

Stratford  
5 Station Street,  
London E15 1DA  
+4420 3147 1500  
[Lettingsstratford@eu.jll.com](mailto:Lettingsstratford@eu.jll.com)

*Urban living, your way.*

[jll.co.uk/residential](http://jll.co.uk/residential)

© 2019 Jones Lang LaSalle IP, Inc. All rights reserved. All information contained herein is from sources deemed reliable; however, no representation or warranty is made to the accuracy thereof.

