

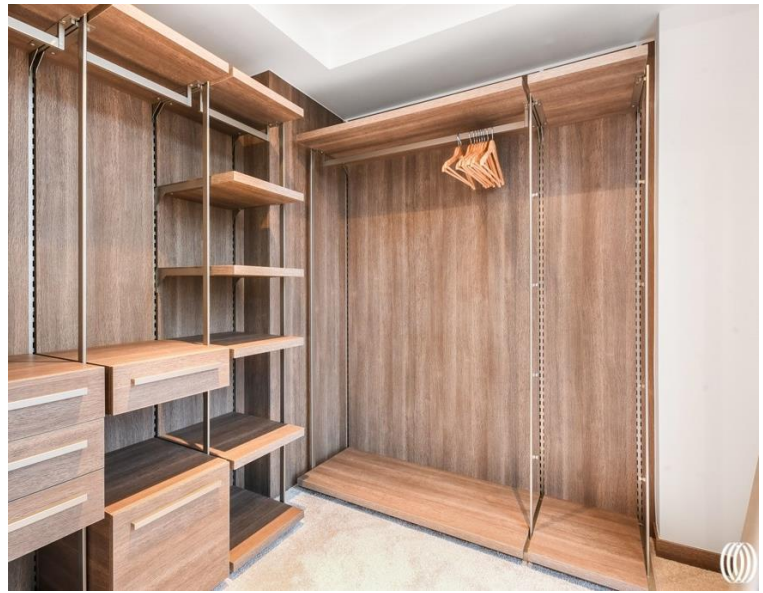


North Wharf Road, London W2

Asking price £1,590,000 Leasehold







Description

Elevate your lifestyle—quite literally—in this sophisticated 12th-floor residence near Paddington Basin. This 2-bedroom urban retreat features a spacious south-facing balcony, perfect for basking in breathtaking sunsets. Experience the height of modern living in one of Paddington's most coveted locations. The interior impresses with its smart layout and tasteful, high-quality decor. Storage cupboards line the hallway, leading to a bright open-plan kitchen and reception area. Here, floor-to-ceiling glass panels showcase the full-length balcony, creating a seamless flow of space.

The apartment features 2 well-appointed bedrooms; a spacious double and a luxurious main suite complete with en-suite facilities and a walk-in wardrobe. A chic communal bathroom adds the finishing touch and convenience to this elevated city residence.

Betula House, one of Paddington's newest luxury developments set in over an acre of private landscaped gardens offering secure entry system, 24-hour concierge service, proximity to excellent transport links, diverse shopping, dining options, and recreational activities along the canal, all within a modern urban setting close to green spaces and amenities.

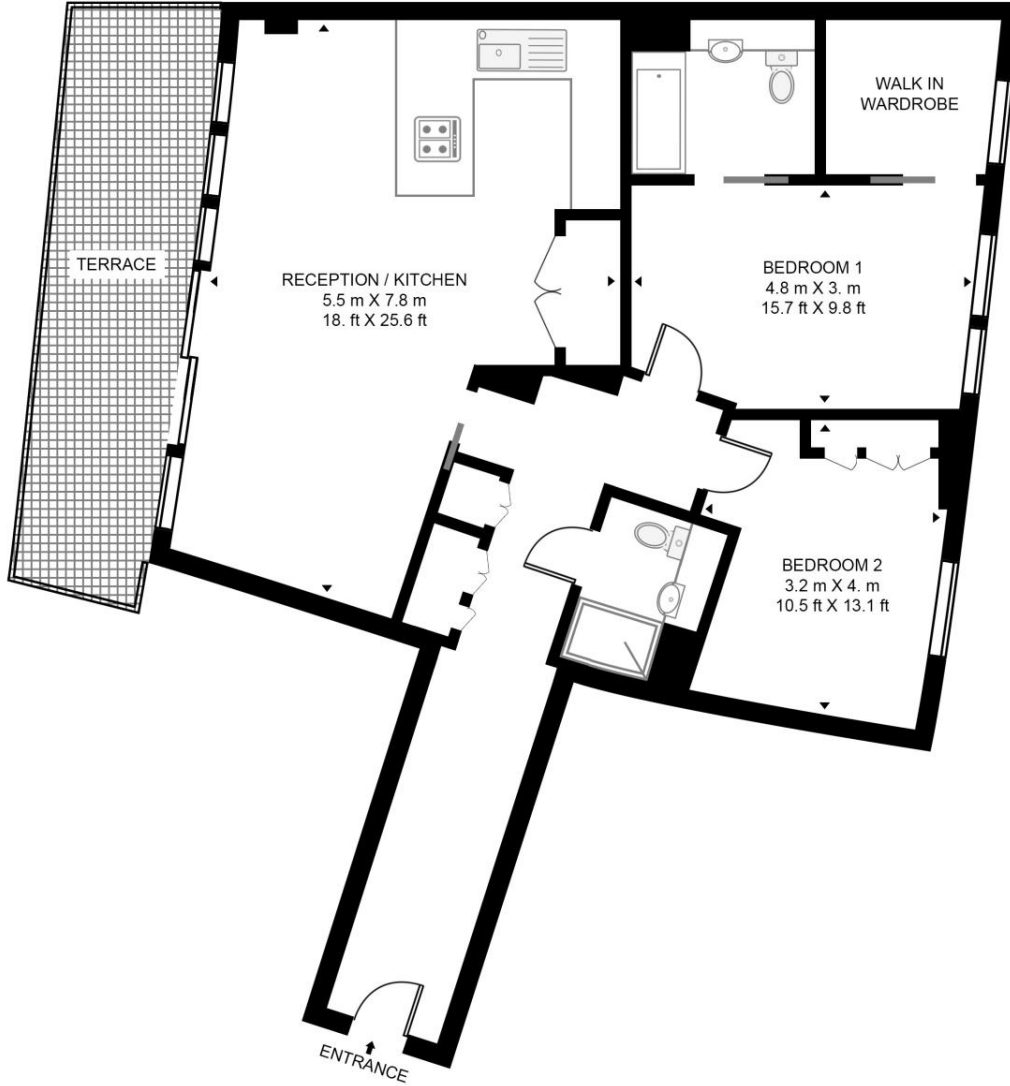
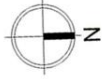
- Paddington Basin
- 2 Double bedrooms
- 2 Bathrooms
- Private balcony with 12th floor views
- Interior designed
- 24hr concierge
- Approx 1021 sq ft / 95 sq m
- EPC B

Floorplan

12 sq ft | 1 sq m

PADDINGTON GARDENS

APPROXIMATE GROSS INTERNAL FLOOR AREA 1021 SQ.FT (94.9 SQ.M)



TWELFTH FLOOR

HDVA

This floor plan has been defined by the RICS Code of Measurement. This floor plan and all others are for approximate representative purposes only and upon usage is agreed to as such by the client.

WWW: hdvirtualart.com | TEL: 0203.974.1567 | EMAIL: info@hdvirtualart.com

Kensington
387 Kensington High Street,
London W14 8QA
+4420 7087 5696
lettingskensington@eu.jll.com

Urban living, your way.

jll.co.uk/residential

© 2019 Jones Lang LaSalle IP, Inc. All rights reserved. All information contained herein is from sources deemed reliable; however, no representation or warranty is made to the accuracy thereof.

