

## Lowndes Square, London SW1X

Price £875 per week - Furnished







## Description

A bright and airy ground floor apartment in this well maintained portered block in the heart of Knightsbridge. The property has been furnished to a high standard throughout and comprises a large reception room, separate modern kitchen, one single bedroom, one double bedroom and one bathroom. The property also benefits from access to communal gardens and a porter.

Lowndes Square is ideally situated within walking distance of Sloane Street, Knightsbridge underground station and the Brompton Road.

Rent is payable on a monthly basis and you may be required to pay more than a month's rent in advance, depending on your circumstances. You will be required to pay a 1 week holding deposit following a successful offer. Utility bills, council tax, telephone line and broadband are not included in the rent. As well as paying the rent, you may also be required to make some additional permitted payments. If your tenancy does not qualify as an AST, additional fees may apply. Please visit [jll.co.uk/fees](http://jll.co.uk/fees) for details of fees which may be payable when renting a property.

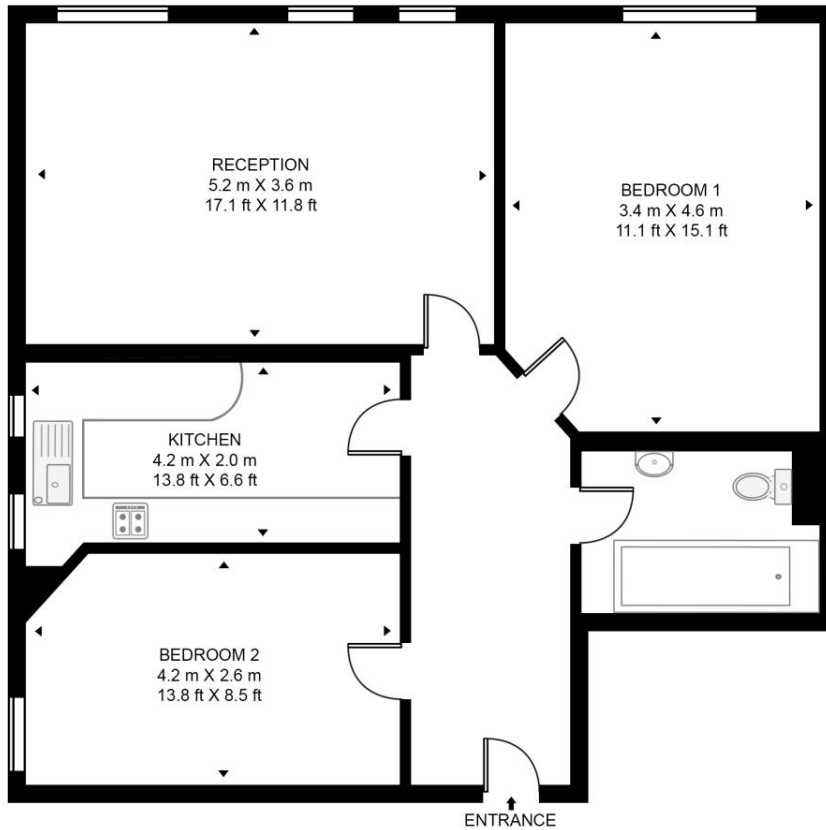
- One large bedroom
- One single bedroom
- Separate modern kitchen
- One bathroom
- Furnished
- Porter
- Communal gardens
- Residential permit parking (applied for separately)
- Approx. 728 sq ft (67.6 sq m)
- EPC: C

# Floorplan

728 sq ft | 68 sq m

## LOWNDES SQUARE

APPROXIMATE GROSS INTERNAL FLOOR AREA 728 SQ.FT (67.6 SQ.M)



GROUND FLOOR



This floor plan has been defined by the RICS Code of Measurement. This floor plan and all others are for approximate representative purposes only and upon usage is agreed to as such by the client.  
WWW: [hdvirtualart.com](http://hdvirtualart.com) | TEL: 0203.974.1567 | EMAIL: [info@hdvirtualart.com](mailto:info@hdvirtualart.com)

Knightsbridge  
174 Brompton Road,  
London SW3 1HP  
+4420 7306 1600  
[SalesKnightsbridge@jll.com](mailto:SalesKnightsbridge@jll.com)

*Urban living, your way.*

[jll.co.uk/residential](http://jll.co.uk/residential)

© 2019 Jones Lang LaSalle IP, Inc. All rights reserved. All information contained herein is from sources deemed reliable; however, no representation or warranty is made to the accuracy thereof.

