



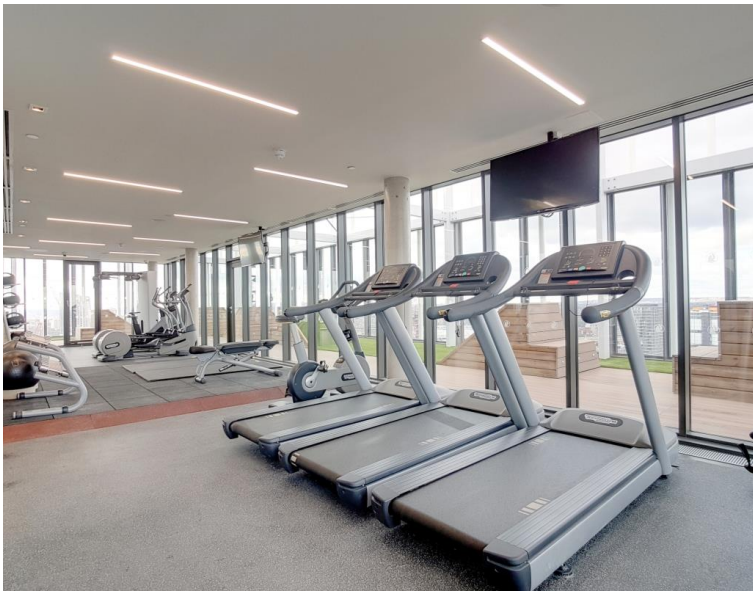
# Great Eastern Road, London E15

Guide price £425,000 Leasehold









## Description

This bright and spacious 6th floor 1 double bedroom apartment is located within Stratosphere Tower E15 where you are a 0.1 mile walk to Stratford Station. Residents further benefit access to a 24hr concierge service, private residents' roof-top gymnasium and Wi-Fi lounge.

Comprising entrance hall with ample storage, 1 double bedroom with built in wardrobe, large tiled bathroom, modern and fully integrated kitchen with large living room leading to a winter garden overlooking the hustle and bustle of Stratford Central.

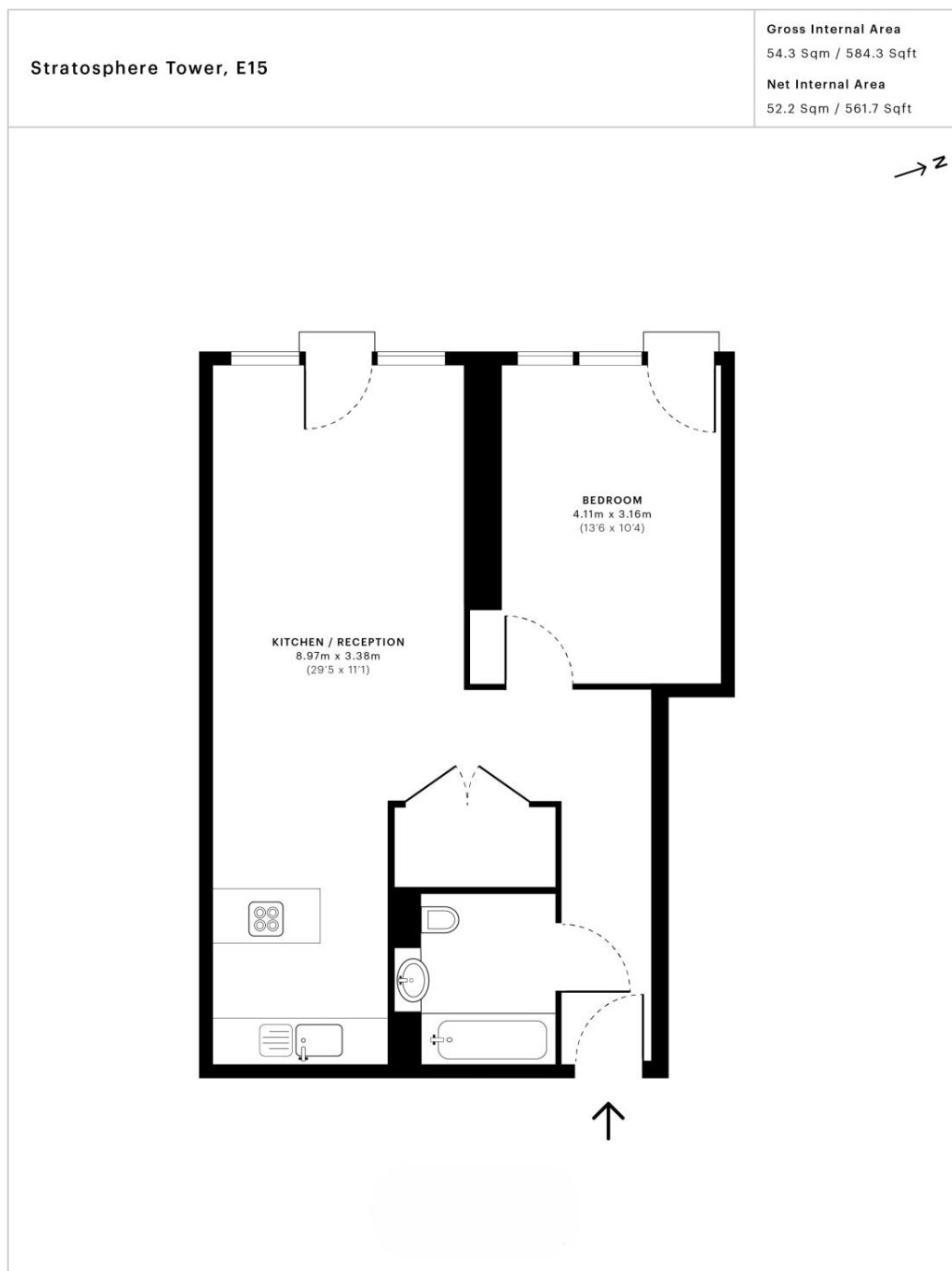
Stratosphere Tower is one of Stratford's most iconic developments which completed for occupation in 2019 and benefits from a 24 hour concierge service, 36th floor private residents' roof-top garden, gymnasium and Wi-Fi lounge.

Residents are also a few minutes walk from the famous Chobham Manor/East Village area offering an abundance of cafes, restaurants and shops, world-class sporting facilities and easy access to Westfield. Stratford Station and Stratford International are also a short walk away with connections from TFL, Crossrail and National Rail including: St. Pancras International & Kings Cross, Stratford International DLR station

- One bedroom
- One bathroom
- Modern fixtures & fittings
- Winter garden
- 6th floor
- Residents' gym
- 24 hr Concierge
- Leasehold
- Approx. 584 sq. ft (54.3 sq. m)
- Moments away from Stratford underground, railway and DLR station and Westfield Shopping Centre

# Floorplan

584 sq ft | 54 sq m



This floor plan was captured for JLL, Stratford on 13/03/2018. Architectural features to scale, derived from millions of laser scan points, accurate to +/- 3cm and produced in accordance with the Royal Institute of Chartered Surveyors Property Measurement standards. Gross Internal Area is measured from the internal faces of external walls and includes internal walls/obstructions. Net Internal Area excludes internal walls/obstructions. Please perform your own checks before relying on these figures in any transaction.



Stratford  
5 Station Street,  
London E15 1DA  
+4420 3147 1500  
Lettingsstratford@eu.jll.com

*Urban living, your way.*

[jll.co.uk/residential](http://jll.co.uk/residential)

© 2019 Jones Lang LaSalle IP, Inc. All rights reserved. All information contained herein is from sources deemed reliable; however, no representation or warranty is made to the accuracy thereof.

