

Empire House, London SW7

Price £950 per week - Unfurnished







Description

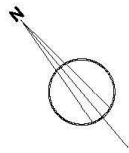
A bright and spacious fourth floor flat (with lift) in this well maintained, portered building in the heart of Knightsbridge. The property consists of two double bedrooms, one bathroom, one shower room, reception room and a fully fitted kitchen/breakfast room. The flat is neutrally decorated throughout and it further benefits from wooden flooring in the reception room.

Rent is payable on a monthly basis and you may be required to pay more than a month's rent in advance, depending on your circumstances. You will be required to pay a 1 week holding deposit following a successful offer. Utility bills, council tax, telephone line and broadband are not included in the rent. As well as paying the rent, you may also be required to make some additional permitted payments. If your tenancy does not qualify as an AST, additional fees may apply. Please visit jll.co.uk/fees for details of fees which may be payable when renting a property.

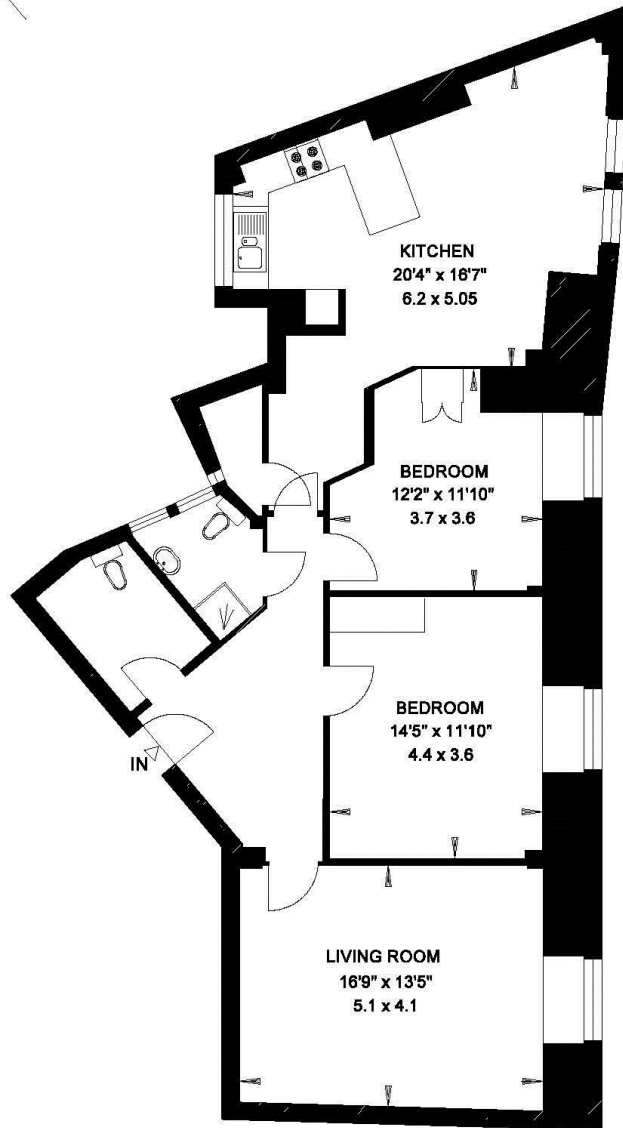
- Unfurnished flat
- 2 Double bedrooms
- 1 Bathroom
- 1 Shower room
- Reception room
- Kitchen/dining room
- Fourth floor
- Lift
- 24 Hour concierge
- EPC: E

Floorplan

1,122 sq ft | 104 sq m



Gross Internal Area = 104 sq. metres
1122 sq. feet



FOURTH FLOOR

Chelsea
2 Cale Street,
London SW3 3QU
+4420 7399 5010
saleschelsea@jll.com

Urban living, your way.

jll.co.uk/residential

© 2019 Jones Lang LaSalle IP, Inc. All rights reserved. All information contained herein is from sources deemed reliable; however, no representation or warranty is made to the accuracy thereof.

