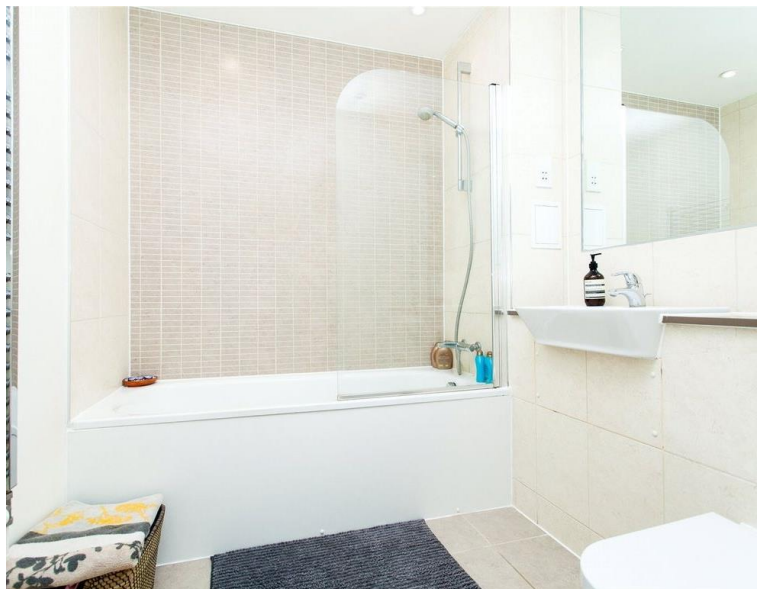




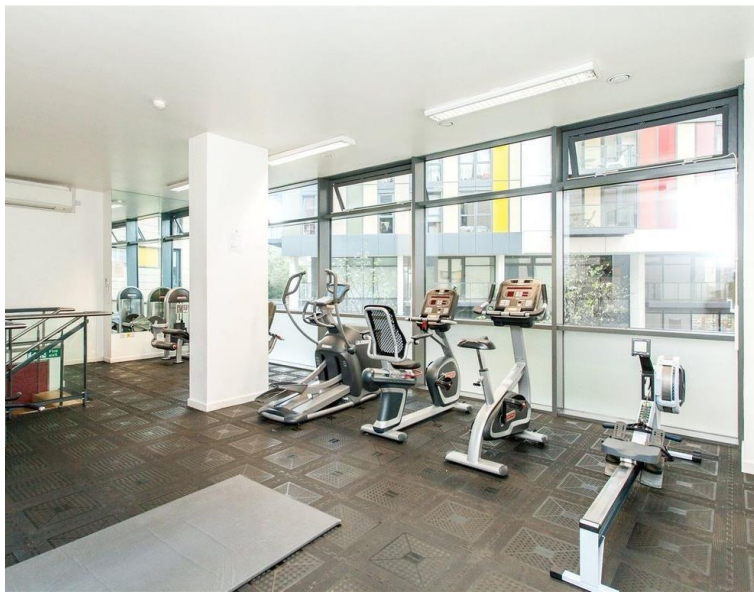
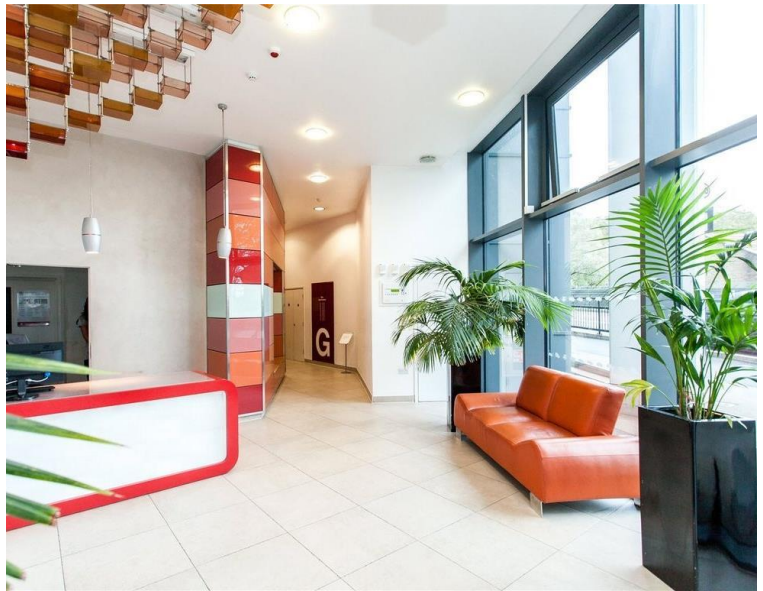
# Homerton Road, London E9

Asking price £375,000 Leasehold









## Description

Spacious one double bedroom apartment available to buy in the Matchmakers Wharf development where residents benefit 24hr concierge service, residents gym and underground parking (by separate negotiation). Located on the twelfth floor with stunning views of The Hackney Marshes and The City of London, this apartment is a must see...

finished to a modern standard throughout and situated on the twelfth floor, this property boasts over 500 sq. ft of living space comprising an open plan kitchen/living area with integrated appliances, underfloor heating, private balcony overlooking the City and Hackney Marshes, one double bedroom with built-in storage and modern bathroom suite.

Matchmakers Wharf s is located directly opposite Hackney Marshes and is within a 10 minute walk to Homerton and Hackney Wick Overground Stations with the direct area offering access to a variety of independent shops, bars and eateries. Stratford Station (Jubilee, Central & DLR) is just one stop from Hackney Wick and provides quick connections into Central London. Several well-connected bus routes run from nearby Eastway and the A12 provides easy access out of London.

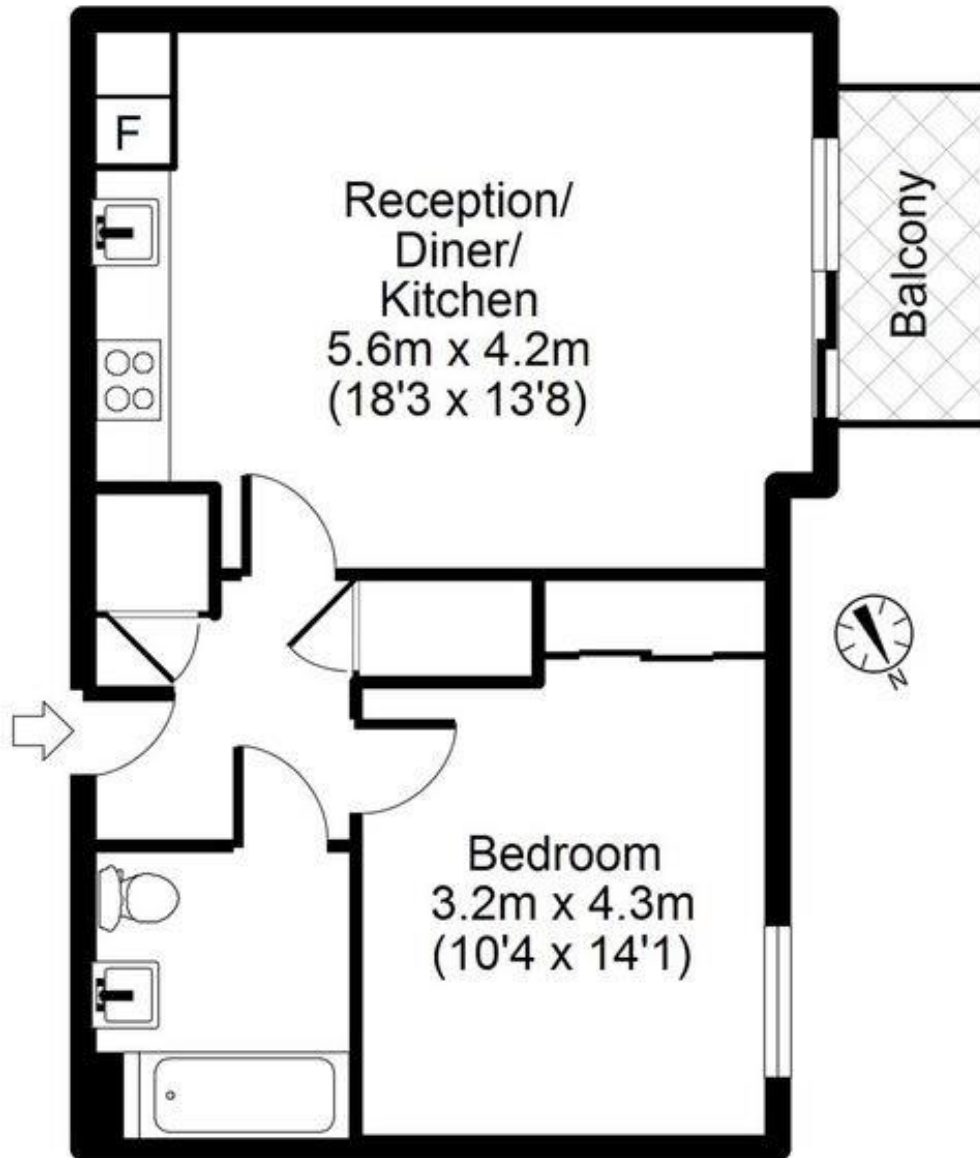
- One bedroom apartment
- 12th Floor
- Matchmakers Wharf development
- Balcony with amazing views
- Parking by separate negotiation
- Approx 502 sq.ft (47 sq.m)
- Residents' gym
- Concierge
- EPC Rating C

# Floorplan

502 sq ft | 47 sq m

## Homerton Road, E9

### 12th Floor



Total area: approx. 47 sq. metres (502 sq. feet)  
For illustration purposes only - not to scale