



Coleherne Road, London SW10

Price £600 per week - Furnished







Description

A newly decorated two bedroom flat on the third floor of a fine period conversion on Coleherne Road. Accommodation comprises a well-proportioned high ceiling reception room with French windows to a terrace, master bedroom, second bedroom, fully fitted modern kitchen and a bathroom. Earl's Court underground and West Brompton overground stations are both within a few minutes' walk in addition to the shops, bars and restaurants of Earl's Court Road.

Rent is payable on a monthly basis and you may be required to pay more than a month's rent in advance, depending on your circumstances. You will be required to pay a 1 week holding deposit following a successful offer. Utility bills, council tax, telephone line and broadband are not included in the rent. As well as paying the rent, you may also be required to make some additional permitted payments. If your tenancy does not qualify as an AST, additional fees may apply. Please visit jll.co.uk/fees for details of fees which may be payable when renting a property.

- 2 Bedrooms
- 1 Bathroom
- Reception room
- Fully fitted kitchen
- Third floor
- Terrace
- Approx. 658 sq ft (61 sq m)
- Furnished
- EPC: D
- Council tax: Band E

Floorplan

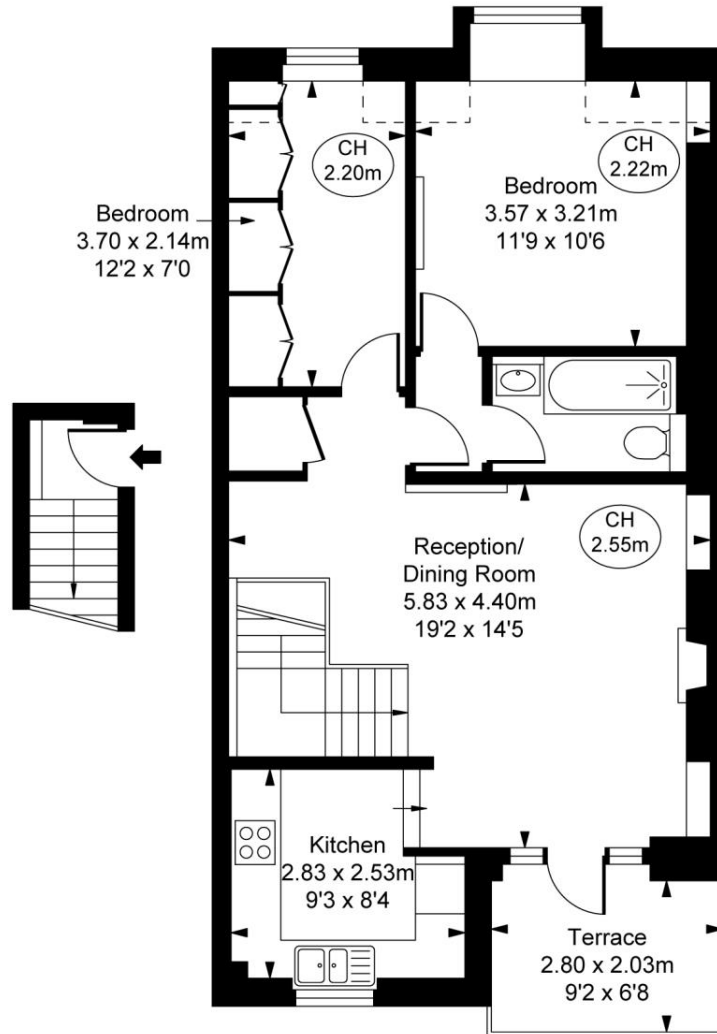
sq ft | sq m

Coleherne Road, SW10

Approximate Gross Internal Area
61.13 sq m / 658 sq ft

(Including restricted height
under 1.5m [-----])

(CH = Ceiling Heights)



Second Floor Entrance
Approximate Gross Internal Area
2.54 sq m / 27 sq ft

Third Floor
Approximate Gross Internal Area
58.59 sq m / 631 sq ft

This plan is not to scale. It is for guidance and not for valuation purposes.
All measurements and areas are approximate only, and have been prepared in accordance with the current edition of the RICS Code of Measuring Practice.
© Fulham Performance

Chelsea
2 Cale Street,
London SW3 3QU
+4420 7399 5010
saleschelsea@jll.com

Urban living, your way.

jll.co.uk/residential

© 2019 Jones Lang LaSalle IP, Inc. All rights reserved. All information contained herein is from sources deemed reliable; however, no representation or warranty is made to the accuracy thereof.

