



Distel Apartments, 19 Telegraph Avenue, Greenwich, SE10 0TG



Distel Apartments, Greenwich, London, SE10

Leasehold (990 years remaining)

Situated in the popular 'Enderby Wharf' development. A rare opportunity to purchase a chain free, ground floor apartment with a large terrace. Residents within this development have access to an on-site concierge and an exclusive gym.

Key Features

- Ground rent: **£300**
- Service Charge: **£2,688.31**
- EPC Rating: **B**
- Council Tax Band: **C**
- 579 Sq. FT (53.8 Sq. M)
- No Onwards Chain
- Residents Gym & Concierge
- Residents Right to Manage
- EWS1 Compliant Development
- Terrace

The accommodation comprises a large entrance hallway, with doors leading to all rooms including a separate utility and storage cupboard. The property boasts of a bright open plan living arrangement, with a single door leading to a large terrace measuring the width of the apartment. The living area is courtyard-facing, with full height windows allowing for the natural light to radiate through the property. The kitchen is finished with a sleek design, including white handleless fitted cupboards at eye and base level and a range of integrated appliances. The bedroom is generously sized and also includes built in wardrobes, as well as a second door leading to the terrace. This one bedroom apartment is the perfect first home for first time buyers and downsizers alike.









Distel Apartments

Approximate Gross Internal Area = 53.8 sq m / 579 sq ft

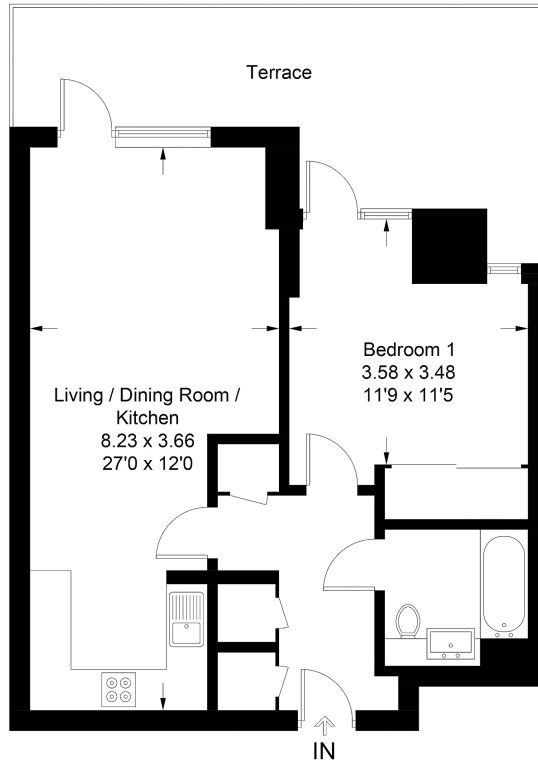


Illustration for identification purposes only, measurements are approximate,
not to scale. Equirise.co.uk (014454474)

22 College Approach, Greenwich,
London, SE10 9HY
Tel: 020 7399 5595

Sales, Lettings & Property Management

residential.jll.co.uk

