



Crosslet Vale, Greenwich, London SE10 8DL



Crosslet Vale, Greenwich, London, SE10

Leasehold (250 years remaining)

This top floor, apartment is ideally located for great transport links, with the DLR and mainline stations.

Key Features

- One double bedroom
- One Bathroom
- Allocated off street parking
- Council Tax: **B**
- Service Charge: **£1,213.31 P/A**
- No ground rent
- Excellent transport links
- EPC: **C**

The accommodation comprises hallway with doors leading to each room. Open plan dining / living and kitchen area. Dual aspect double bedroom and a separate family bathroom.

The property is light and spacious throughout and is situated in the heart of Greenwich, close to the town centre which benefits from Royal Greenwich Park, one of London's oldest Royal Parks and a UNESCO World Heritage site.

The street is also close to popular Greenwich attractions such as the National Maritime Museum, The Royal Observatory and the Cutty Sark.



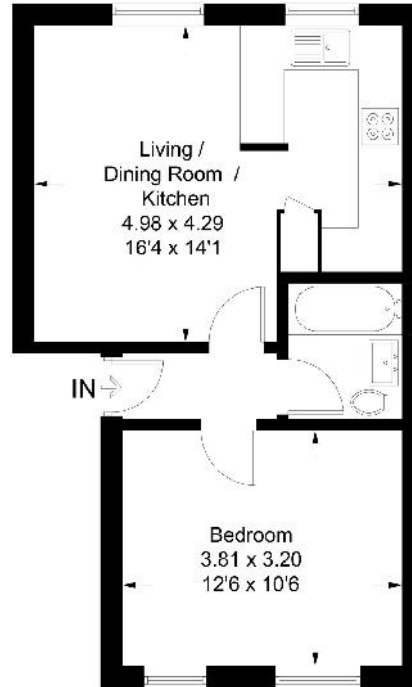






Crosslet Vale

Approximate Cross Internal Area = 38.3 sq m / 412 sq ft.



Third Floor

Illustration for identification purposes only, measured elements are approximate, not to scale, Fourstate.co © (JD1159161)

22 College Approach, Greenwich,
London, SE10 9HY
Tel: 020 7399 5595

Sales, Lettings & Property Management

residential.jll.co.uk

