



# Kensington High Street, London W14

Asking price £4,800,000 Leasehold







## Description

A stunning penthouse apartment in one of London's most opulent new developments in the heart of Kensington. Property comprises master bedroom with dressing room and en suite bathroom, 2 further double bedrooms with walk-in wardrobes and en-suite bathrooms, guest cloakroom, a large reception room and a fully fitted, open-plan kitchen. The flat has been finished to the highest of standards and further benefits include residents parking, a swimming pool, gym, sauna, steam room, cinema and 24 hour concierge service. Wolfe House is situated at the end of Kensington High Street with easy access to Kensington Olympia overland and High Street Kensington tube station. The open spaces of Holland Park are just a short stroll away.

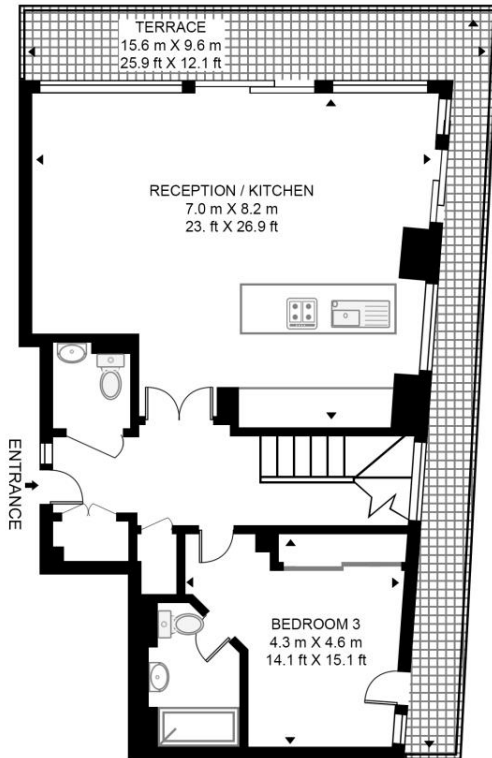
Rent is payable on a monthly basis and you may be required to pay more than a month's rent in advance, depending on your circumstances. You will be required to pay a 1 week holding deposit following a successful offer. Utility bills, council tax, telephone line and broadband are not included in the rent. As well as paying the rent, you may also be required to make some additional permitted payments. If your tenancy does not qualify as an AST, additional fees may apply. Please visit [jll.co.uk/fees](http://jll.co.uk/fees) for details of fees which may be payable when renting a property.

- Penthouse apartment
- 3 Bedrooms
- 3 Bathrooms
- Private balcony
- Parking
- 24 Hour concierge
- Gym, swimming pool, cinema
- Approx 1849 sq ft (172 sq m)
- EPC: B
- Council tax: Band H

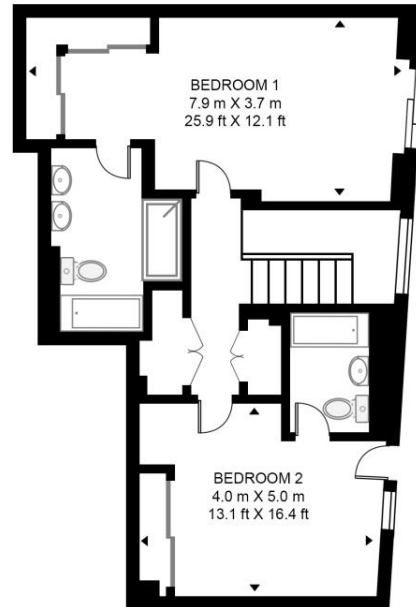
# Floorplan

1,849 sq ft | 172 sq m

**WOLFE HOUSE, 375 KENSINGTON HIGH STREET**  
APPROXIMATE GROSS INTERNAL FLOOR AREA 1849 SQ.FT (171.8 SQ.M)



ELEVENTH FLOOR



TWELFTH FLOOR



This floor plan has been defined by the RICS Code of Measurement. This floor plan and all others are for approximate representative purposes only and upon usage is agreed to as such by the client.

WWW: [hdvirtualart.com](http://hdvirtualart.com) | TEL: 0203.974.1567 | EMAIL: [info@hdvirtualart.com](mailto:info@hdvirtualart.com)

Kensington  
387 Kensington High Street,  
London W14 8QA  
+4420 7087 5696  
[lettingskensington@eu.jll.com](mailto:lettingskensington@eu.jll.com)

*Urban living, your way.*

[jll.co.uk/residential](http://jll.co.uk/residential)

© 2019 Jones Lang LaSalle IP, Inc. All rights reserved. All information contained herein is from sources deemed reliable; however, no representation or warranty is made to the accuracy thereof.

