

175 Long Lane, London SE1

Price £725 per week - Furnished







Description

A contemporary 2 bedroom apartment in the Taper Building, located in the heart of Bermondsey, SE1

This luxury 2 bedroom apartment is furnished or unfurnished and comprises 2 double bedroom with fitted wardrobes, reception with balcony, master bedroom with en-suite, open plan fitted kitchen with integrated appliances and modern bathroom.

The Taper Building benefits from concierge, residents gym, communal courtyard and roof terrace. London Bridge station is just 0.3 miles away, with both Overground, Northern line and Jubilee line services.

Rent is payable on a monthly basis and you may be required to pay more than a month's rent in advance, depending on your circumstances. You will be required to pay a 1 week holding deposit following a successful offer. Utility bills, council tax, telephone line and broadband are not included in the rent. As well as paying the rent, you may also be required to make some additional permitted payments. If your tenancy does not qualify as an AST, additional fees may apply. Please visit jll.co.uk/fees for details of fees which may be payable when renting a property.

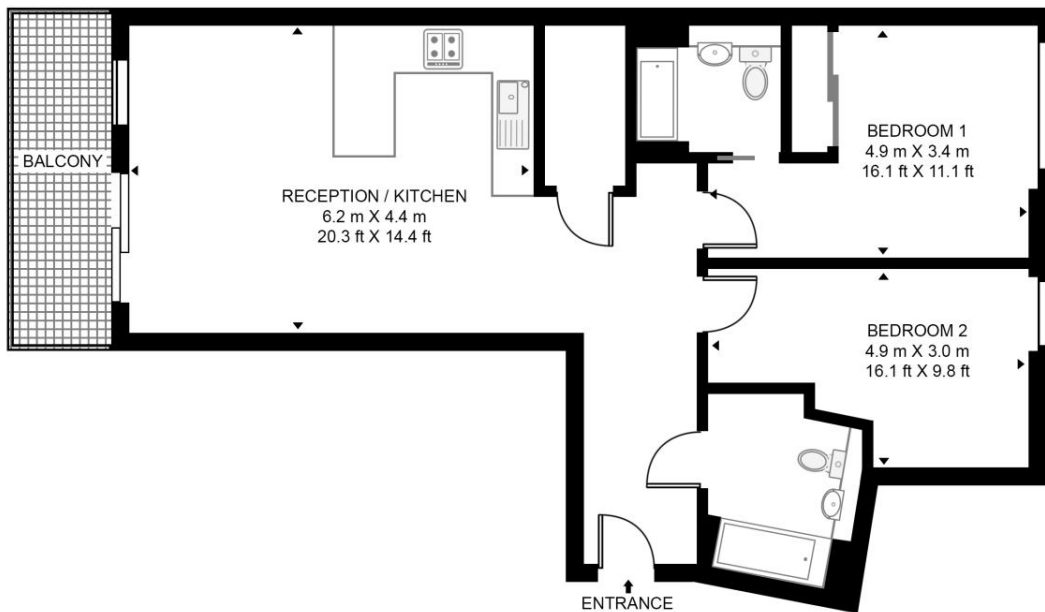
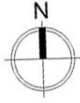
- 2 Bedrooms
- 2 Bathrooms
- 4th Floor
- Balcony
- 24 hour concierge
- Resident's gym
- Resident's garden
- 0.5 miles from London Bridge Station
- Approx. 858 sq ft (79.7 sq m)
- Furnished

Floorplan

858 sq ft | 80 sq m

TAPER BUILDING

APPROXIMATE GROSS INTERNAL FLOOR AREA 858 SQ.FT (79.7 SQ.M)



FOURTH FLOOR

HDVA

This floor plan has been defined by the RICS Code of Measurement. This floor plan and all others are for approximate representative purposes only and upon usage is agreed to as such by the client.

WWW: hdvirtualart.com | TEL: 0203.974.1567 | EMAIL: info@hdvirtualart.com

City
25 Walbrook The Walbrook
Building,
London EC4N 8AF
+4420 7337 4000

Urban living, your way.

jll.co.uk/residential

© 2019 Jones Lang LaSalle IP, Inc. All rights reserved. All information contained herein is from sources deemed reliable; however, no representation or warranty is made to the accuracy thereof.

