



Bolton House, Trafalgar Road, Greenwich, London SE10 9UT



Bolton House, Greenwich, SE10

Leasehold (89 years remaining)

Situated a 5 minute walk from Maze Hill Station and Greenwich Park, this charming apartment is perfect for commuters as well as in reach of various local amenities.

Key Features

- 1 Double bedroom
- Top Floor
- Resident's parking permit
- Council Tax: **B**
- Council Tax: **£1,350 P/A**
- No ground rent
- Walk to Maze Hill mainline
- EPC: **D**

Located on the top floor of a purpose built block, the property offers a dual aspect of the city skyline and picturesque views of Greenwich Park. The accommodation comprises an inviting hallway with doors leading to all the rooms within the property.

The reception room is in excellent decorative order, with neutral tones and furnishings throughout. The kitchen is arranged with an array of eye and base level units and integrated appliances, completely separate to the reception room. The property includes one double bedroom with fitted wardrobes and a family bathroom.



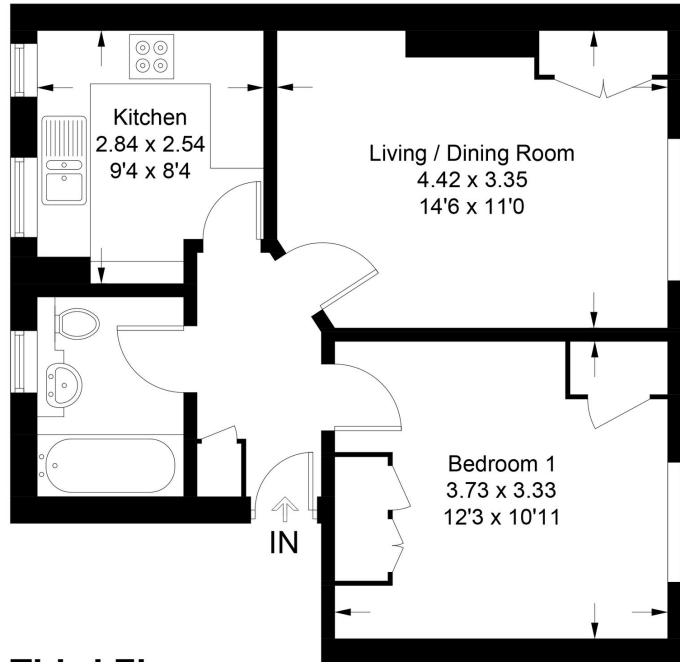






Bolton House

Approximate Gross Internal Area = 43.4 sq m / 467 sq ft



Third Floor

Illustration for identification purposes only, measurements are approximate, not to scale. Fourlabs.co © (ID1151175)

22 College Approach, Greenwich,
London, SE10 9HY
Tel: 020 7399 5595

Sales, Lettings & Property Management

residential.jll.co.uk

