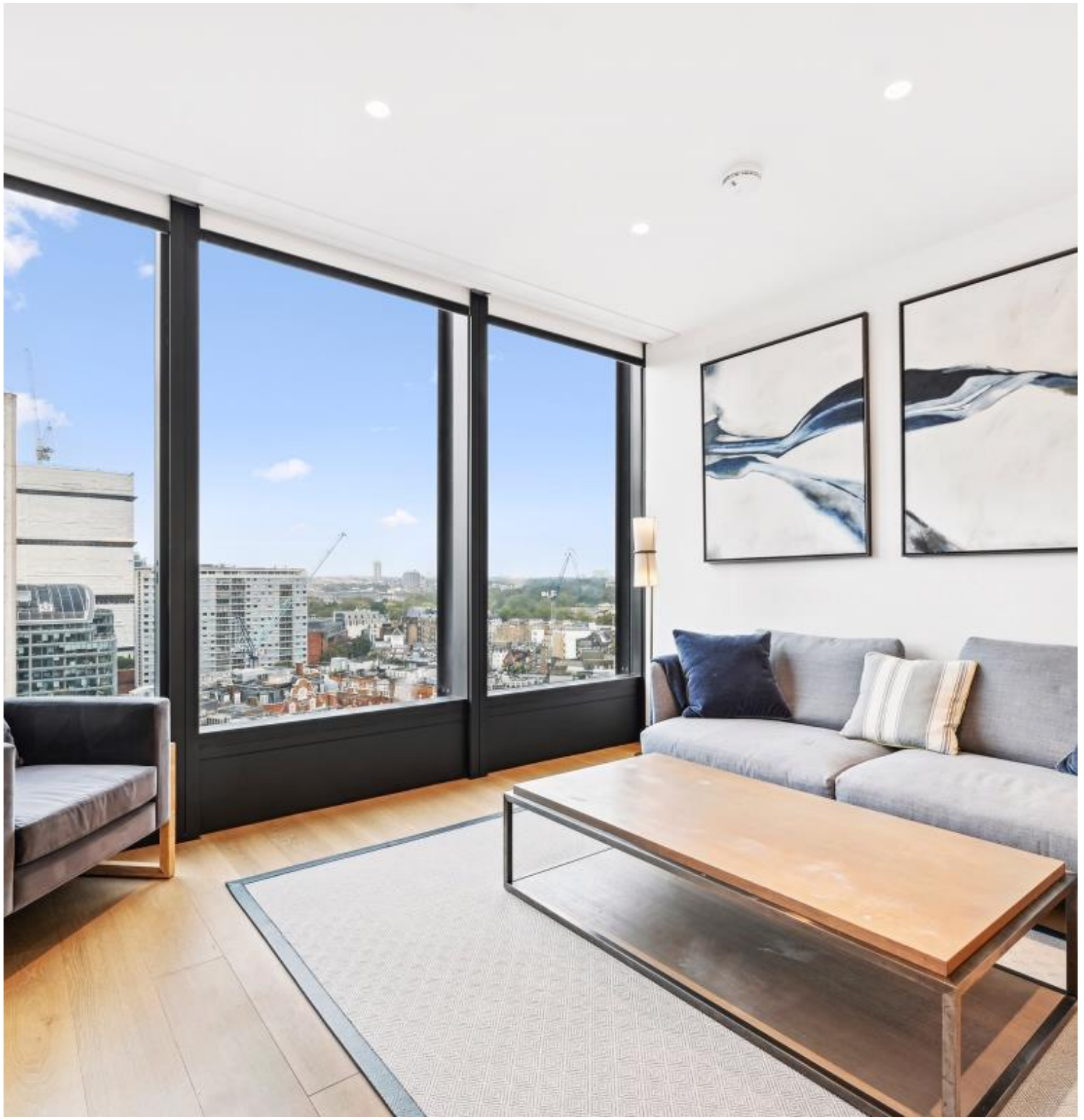




Buckingham Gate, London SW1E

Price £1,300 per week - Furnished







Description

A beautifully presented thirteenth floor apartment which has been interior designed by TH2 Designs and offers spectacular westerly views of the City. Accommodation comprises master bedroom with en suite shower room, second double bedroom, one bathroom, a fully fitted kitchen with seating area adjoining a stylishly decorated reception. Further benefits include wooden flooring and marble back drops with floor to ceiling glass windows providing natural light and city views.

Rent is payable on a monthly basis and you may be required to pay more than a month's rent in advance, depending on your circumstances. You will be required to pay a 1 week holding deposit following a successful offer. Utility bills, council tax, telephone line and broadband are not included in the rent. As well as paying the rent, you may also be required to make some additional permitted payments. If your tenancy does not qualify as an AST, additional fees may apply. Please visit jll.co.uk/fees for details of fees which may be payable when renting a property.

- 2 Double bedrooms
- 1 Bathroom
- 1 Shower room (en suite)
- Reception room
- Open plan kitchen
- Thirteenth floor
- Lift
- 24 Hour concierge
- Approx. 864 sq ft (80 sq m)
- Furnished

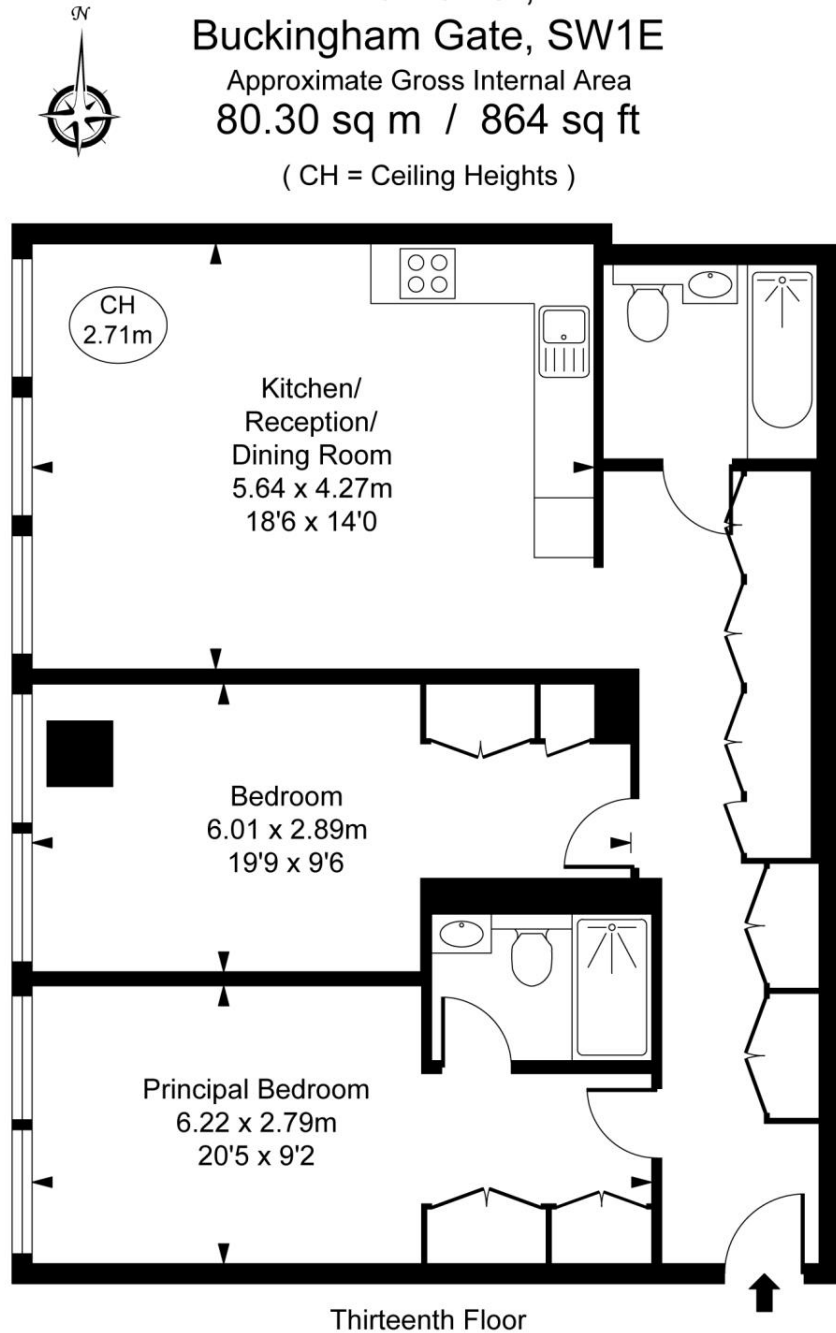
Floorplan

864 sq ft | 80 sq m

The Tower, Buckingham Gate, SW1E

Approximate Gross Internal Area
80.30 sq m / 864 sq ft

(CH = Ceiling Heights)



This plan is not to scale. It is for guidance and not for valuation purposes.
All measurements and areas are approximate only, and have been prepared in accordance with the current edition of the RICS Code of Measuring Practice.
© Fulham Performance

Knightsbridge
174 Brompton Road,
London SW3 1HP
+4420 7306 1600
SalesKnightsbridge@jll.com

Urban living, your way.

jll.co.uk/residential

© 2019 Jones Lang LaSalle IP, Inc. All rights reserved. All information contained herein is from sources deemed reliable; however, no representation or warranty is made to the accuracy thereof.

