



## Russell Square, London WC1B

Price £590 per week - Furnished





# Description

A spacious apartment located in a traditional mansion block overlooking Russell Square. With a separate kitchen, en-suite bathroom, daytime porter, lift access and communal gym.

The property is furnished and consists of a spacious reception room with large windows overlooking Russell Square, a separate fully fitted kitchen, and a double bedroom with an en-suite bathroom and built-in wardrobes.

Russell Square is in the heart of Bloomsbury and is just a short walk to Russell Square underground station as well as the neighbouring areas Kings Cross, Covent Garden and Soho.

Rent is payable on a monthly basis and you may be required to pay more than a month's rent in advance, depending on your circumstances. You will be required to pay a 1 week holding deposit following a successful offer. Utility bills, council tax, telephone line and broadband are not included in the rent. As well as paying the rent, you may also be required to make some additional permitted payments. If your tenancy does not qualify as an AST, additional fees may apply. Please visit [jll.co.uk/fees](http://jll.co.uk/fees) for details of fees which may be payable when renting a property.

- Spacious Apartment
- Separate Kitchen
- En-Suite Bathroom
- Concierge
- Lift Access
- Furnished
- Approx. 52sq m / 570sq ft
- Council tax: Band F

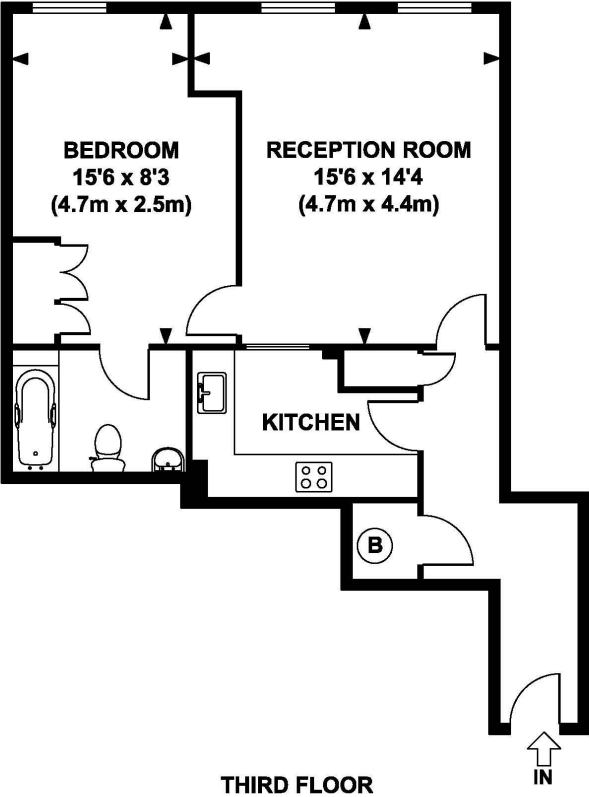
Deposit amount: £2,950 (estimate) and an initial holding deposit of 1 week's rent is payable to re



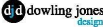
# Floorplan

570 sq ft | 53 sq m

Approx. gross internal area  
570 Sq Ft. / 52 Sq M.



Every attempt has been made to ensure the accuracy of this floorplan however, measurements are approximate and for illustration purposes only. Not to scale.  
Photography, floorplan and brochure design by Dowling Jones Design [www.dowlingjonesdesign.com](http://www.dowlingjonesdesign.com) 020 7386 1014 / 07763 974 209



**Mayfair and Marylebone**

St George Street,  
London W1S 2FQ  
+44 207 399 5550  
mayfair@jll.com

*Urban living, your way.*

[jll.co.uk/residential](http://jll.co.uk/residential)

© 2019 Jones Lang LaSalle IP, Inc. All rights reserved. All information contained herein is from sources deemed reliable; however, no representation or warranty is made to the accuracy thereof.

