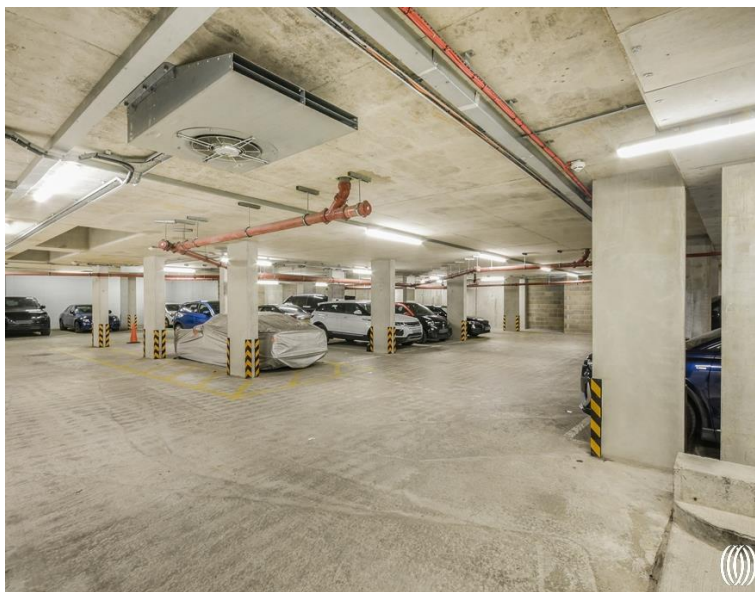


Jupp Road West, London E15

Guide price £425,000 Leasehold







Description

Proud to offer this modern (572 sq. ft) one bedroom apartment with balcony located on the 4th floor of the iconic development, Atelier Point in Stratford.

This contemporary home features an open-plan layout, maximising functionality and natural light. The well-appointed kitchen boasts sleek SMEG appliances and Quartz stone worktops, perfect for culinary enthusiasts. The spacious bedroom with fitted wardrobes provides a tranquil retreat, while the modern bathroom is equipped with high-quality fixtures. A private balcony extends the living area outdoors, ideal for enjoying morning coffee or evening relaxation.

Residents will further benefit from secure main entry system, lift access, residential roof terrace and includes an underground parking, adding convenience for residents.

Located a mere 0.3 mile walk to Stratford Station, approximately a 5-minute walk to one of London's most well connected and busiest stations. You are also just a couple of minutes' walk to many local amenities such as Stratford Westfield shopping Centre to indulge in retail therapy and a selection of some of London's most well-known restaurants.

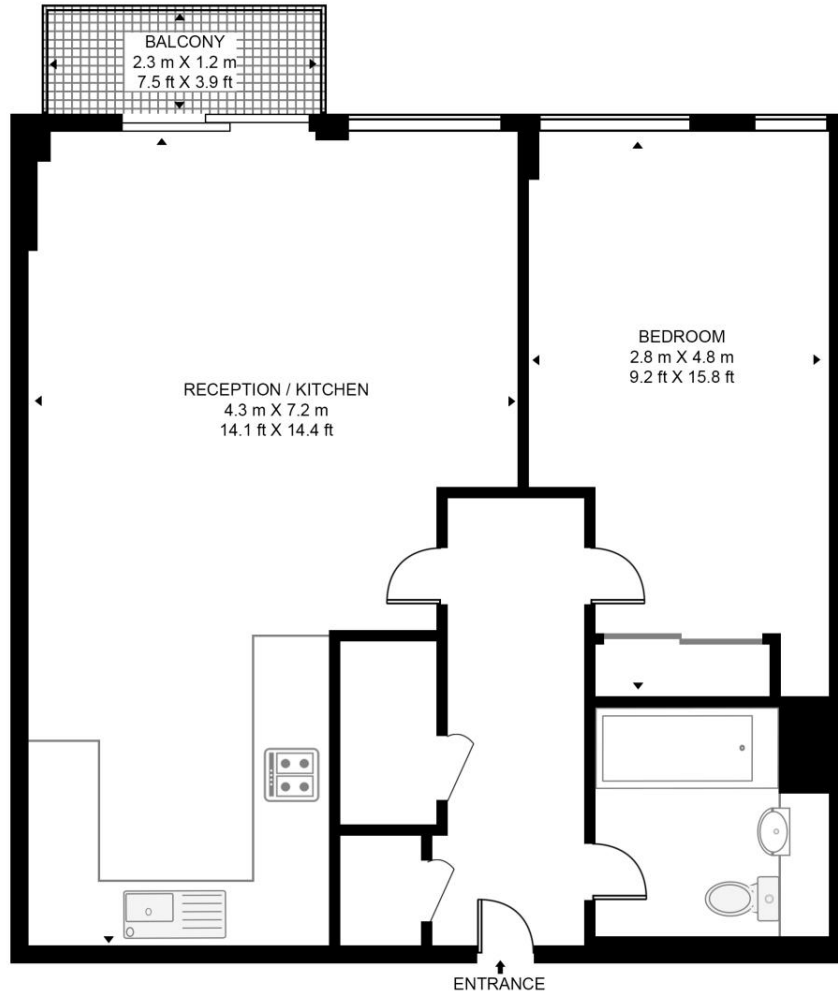
- One bedroom apartment
- 4th floor
- Modern and secure development
- Private balcony
- Residents' roof terrace
- Underground parking to buy
- Approx. 572 sq. ft (53.2 sq. m)
- Visual intercom security system
- Short walk to Westfield's Stratford City
- 5min walk to Stratford Underground Station

Floorplan

572 sq ft | 53 sq m

ATELIER POINT

APPROXIMATE GROSS INTERNAL FLOOR AREA 572 SQ.FT (53.2 SQ.M)



FOURTH FLOOR



This floor plan has been defined by the RICS Code of Measurement. This floor plan and all others are for approximate representative purposes only and upon usage is agreed to as such by the client.
WWW: hdvirtualart.com | TEL: 0203.974.1567 | EMAIL: info@hdvirtualart.com

Stratford
5 Station Street,
London E15 1DA
+4420 3147 1500
Lettingsstratford@eu.jll.com

Urban living, your way.

jll.co.uk/residential

© 2019 Jones Lang LaSalle IP, Inc. All rights reserved. All information contained herein is from sources deemed reliable; however, no representation or warranty is made to the accuracy thereof.

