



Alderney Street, London SW1V

Price £542 per week - Furnished







Description

A wonderful raised ground floor flat in this converted terrace house close to the amenities of Victoria. The property consists of one double bedroom with en suite bathroom, reception room and a fully fitted kitchen. The property is light and bright and it is available on a furnished basis.

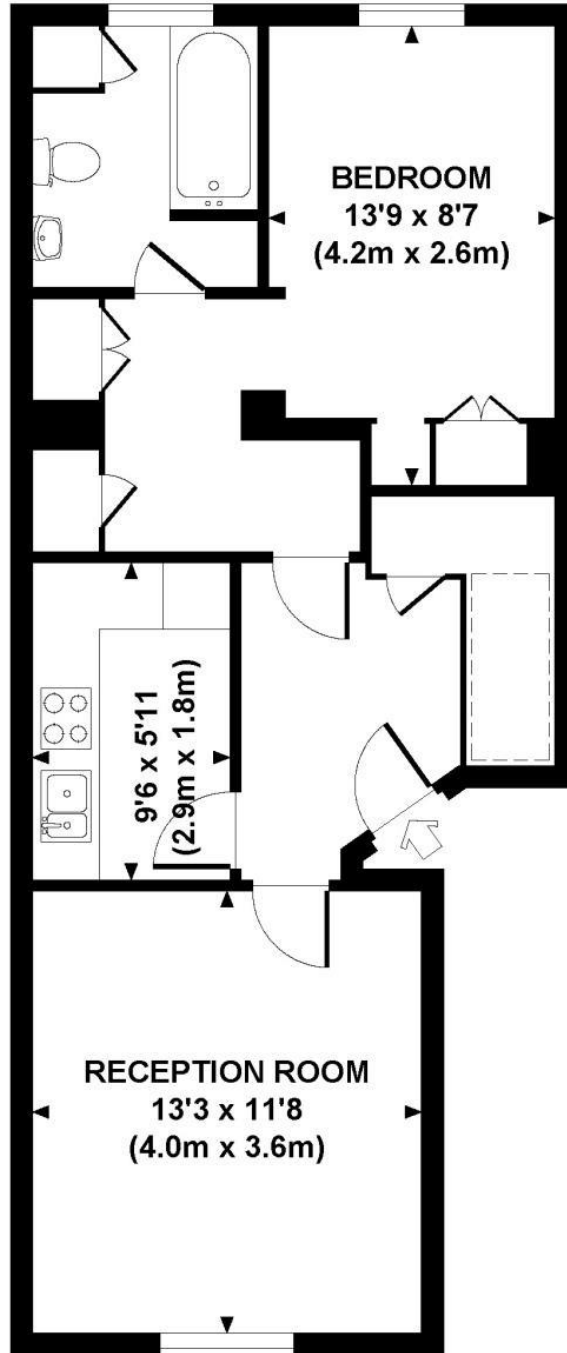
Rent is payable on a monthly basis and you may be required to pay more than a month's rent in advance, depending on your circumstances. You will be required to pay a 1 week holding deposit following a successful offer. Utility bills, council tax, telephone line and broadband are not included in the rent. As well as paying the rent, you may also be required to make some additional permitted payments. If your tenancy does not qualify as an AST, additional fees may apply. Please visit jll.co.uk/fees for details of fees which may be payable when renting a property.

- 1 Double bedroom
- 1 Bathroom
- Reception room
- Fully fitted kitchen
- Raised ground floor
- Approx. 525 sq ft (49 sq m)
- Furnished
- EPC: C
- Council Tax: Band F
- Residential permit parking by application

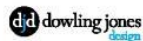
Floorplan

525 sq ft | 49 sq m

Approx. gross internal area
525 Sq Ft. / 49 Sq M.



GROUND FLOOR



Every attempt has been made to ensure the accuracy of this floor plan however, measurements are approximate and for illustration purposes only. Not to scale. Photography, floor plans & brochures © 2011 Dowling Jones Design Ltd www.dowlingjonesdesign.com 020 7610 9933 / 07793 974 209

Knightsbridge
174 Brompton Road,
London SW3 1HP
+4420 7306 1600
SalesKnightsbridge@jll.com

Urban living, your way.

jll.co.uk/residential

© 2019 Jones Lang LaSalle IP, Inc. All rights reserved. All information contained herein is from sources deemed reliable; however, no representation or warranty is made to the accuracy thereof.

